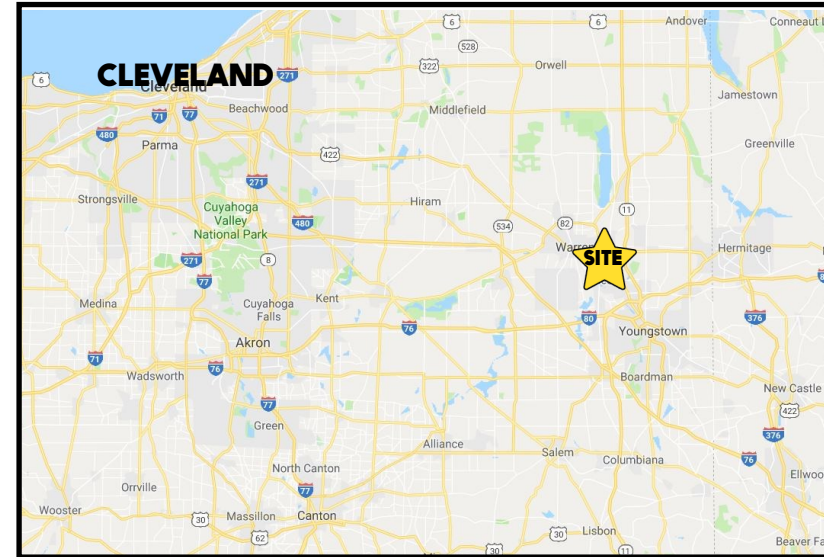
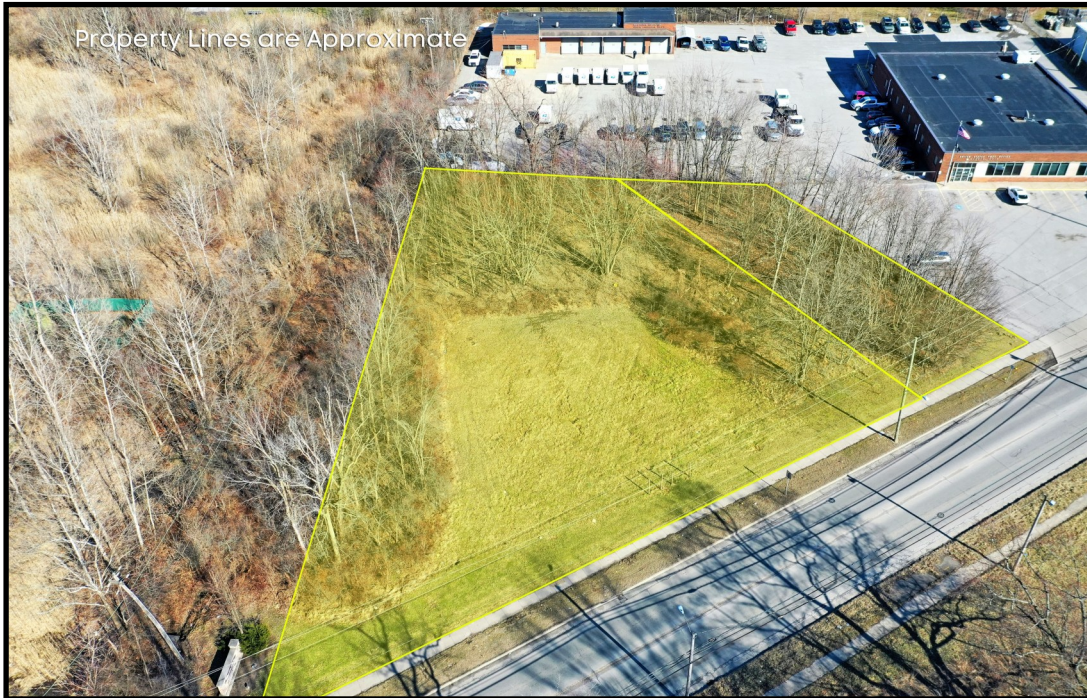


LOCATION

Niles Rd SE, Warren, OH



HIGHLIGHTS

- Vacant land on Niles Rd (SR 169) in the City of Warren
- This 1.13 acre site has 260' of frontage
- Located on the North – South Corridor between Niles & Warren
- Utilities are available
- Zoned Commercial B

CONTACT

THERESA MORSE

330.518.6082

tmorse@platzrealtygroup.com

Office: 330.757.4889 | Fax: 330.294.5622 | 3830 Starr Centre Dr, Suite 2, Canfield, OH 44406

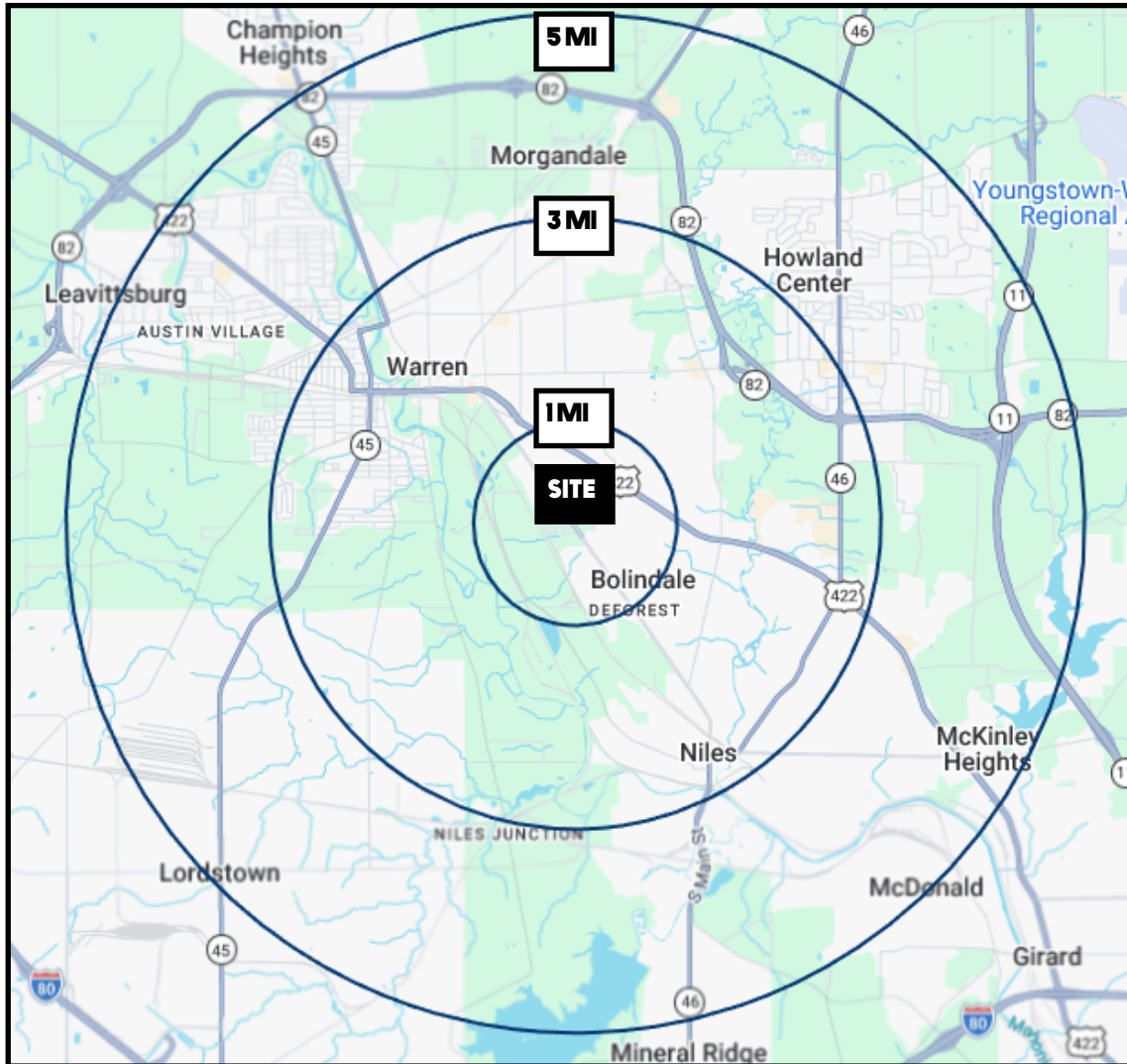
www.PLATZREALTYGROUP.com



Office: 330.757.4889 | Fax: 330.294.5622 | 3830 Starr Centre Dr, Suite 2, Canfield, OH 44406

www.PLATZREALTYGROUP.com

The information presented was obtained from sources believed to be true and reliable. The Platz Realty Group makes no warranties or guarantees to the accuracy of the information.



DEMOGRAPHICS	1 MI	3 MI	5 MI
POPULATION	5,484	46,188	88,083
HOUSEHOLDS	2,438	20,415	38,080
MEDIAN AGE	40	41	42
AVERAGE HH INCOME	\$43,502	\$54,749	\$64,305

SITE INFORMATION

LOCATION	Warren City Trumbull County
PARCELS	38-796475 38-243350
PROPERTY TYPE	Land
ZONING	Commercial B
FRONTAGE	260'
SIZE	1.13 acres
REAL ESTATE TAXES	\$142/year
PRICE	\$25,000

Office: 330.757.4889 | Fax: 330.294.5622 | 3830 Starr Centre Dr, Suite 2, Canfield, OH 44406