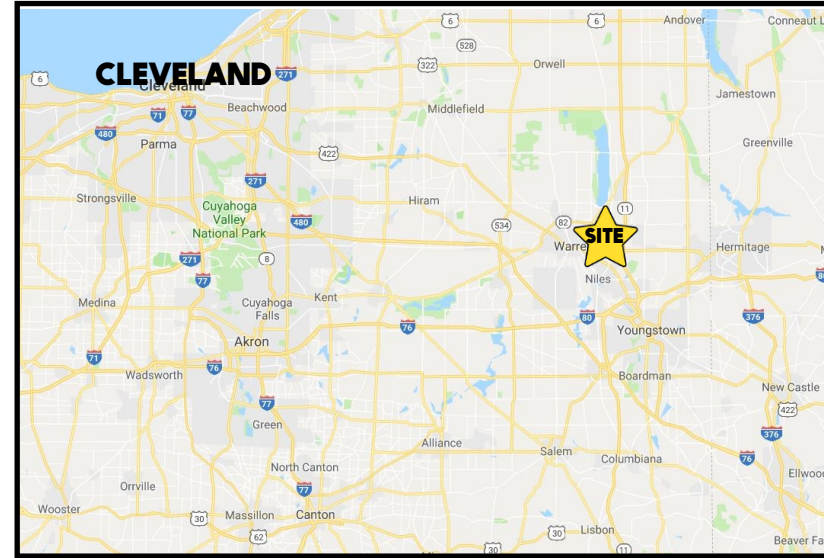


LOCATION

900 E State St, Sharon, PA 16146



3D TOUR [900 E State](#)

HIGHLIGHTS

- Former Walgreens in Sharon, PA
- Approximately 13,650 SF on 1.24 acres
- Located at a signalized intersection
- Lots of parking
- Pylon sign with electronic reader board

CONTACT

BILL KUTLICK

330.565.5701

bkutlick@platzrealtygroup.com

MATT WILSON

330.347.9677

mwilson@platzrealtygroup.com

Office: 330.757.4889 | Fax: 330.294.5622 | 3830 Starr Centre Dr, Suite 2, Canfield, OH 44406

www.PLATZREALTYGROUP.com



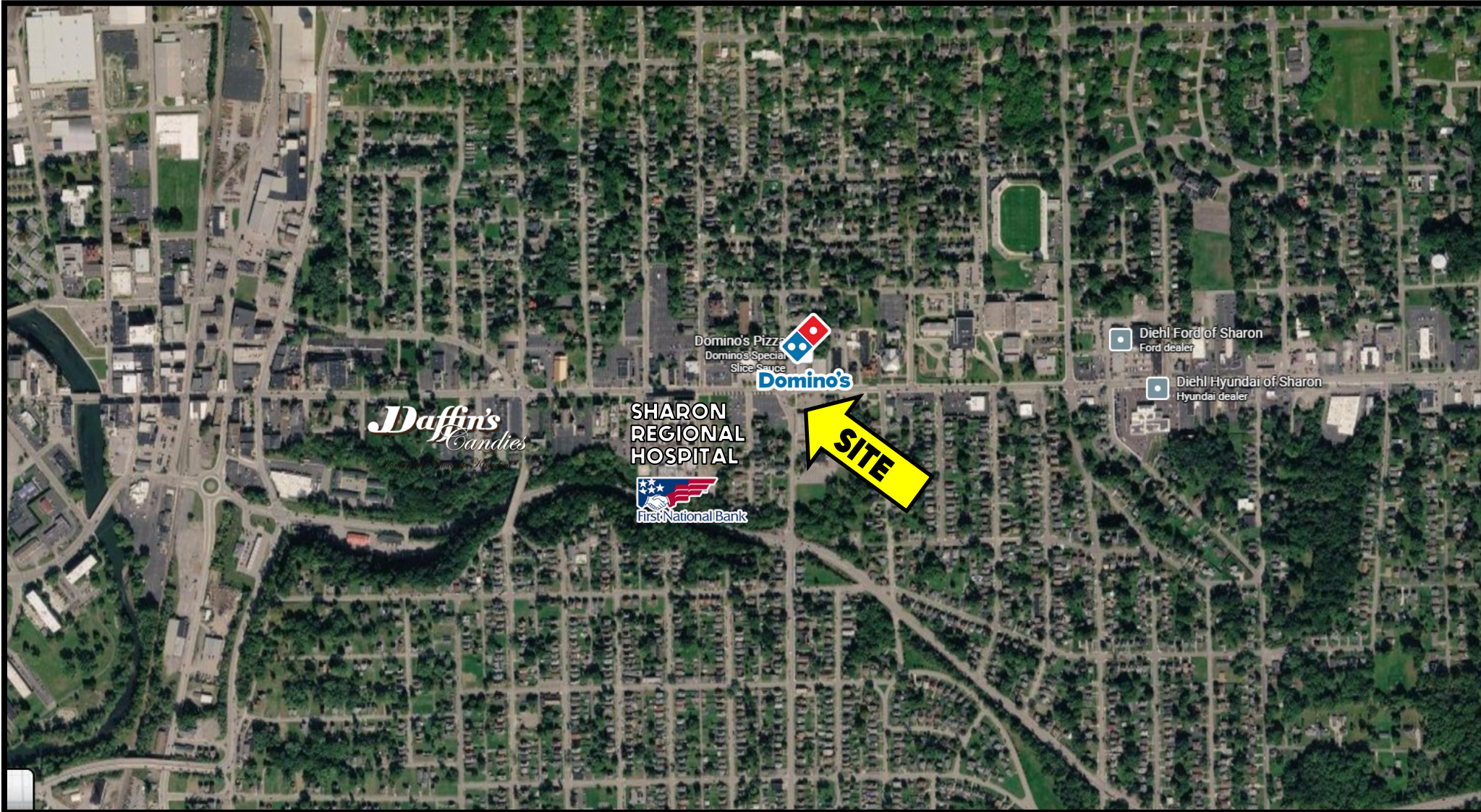
Office: 330.757.4889 | Fax: 330.294.5622 | 3830 Starr Centre Dr, Suite 2, Canfield, OH 44406

www.PLATZREALTYGROUP.com



Office: 330.757.4889 | Fax: 330.294.5622 | 3830 Starr Centre Dr, Suite 2, Canfield, OH 44406

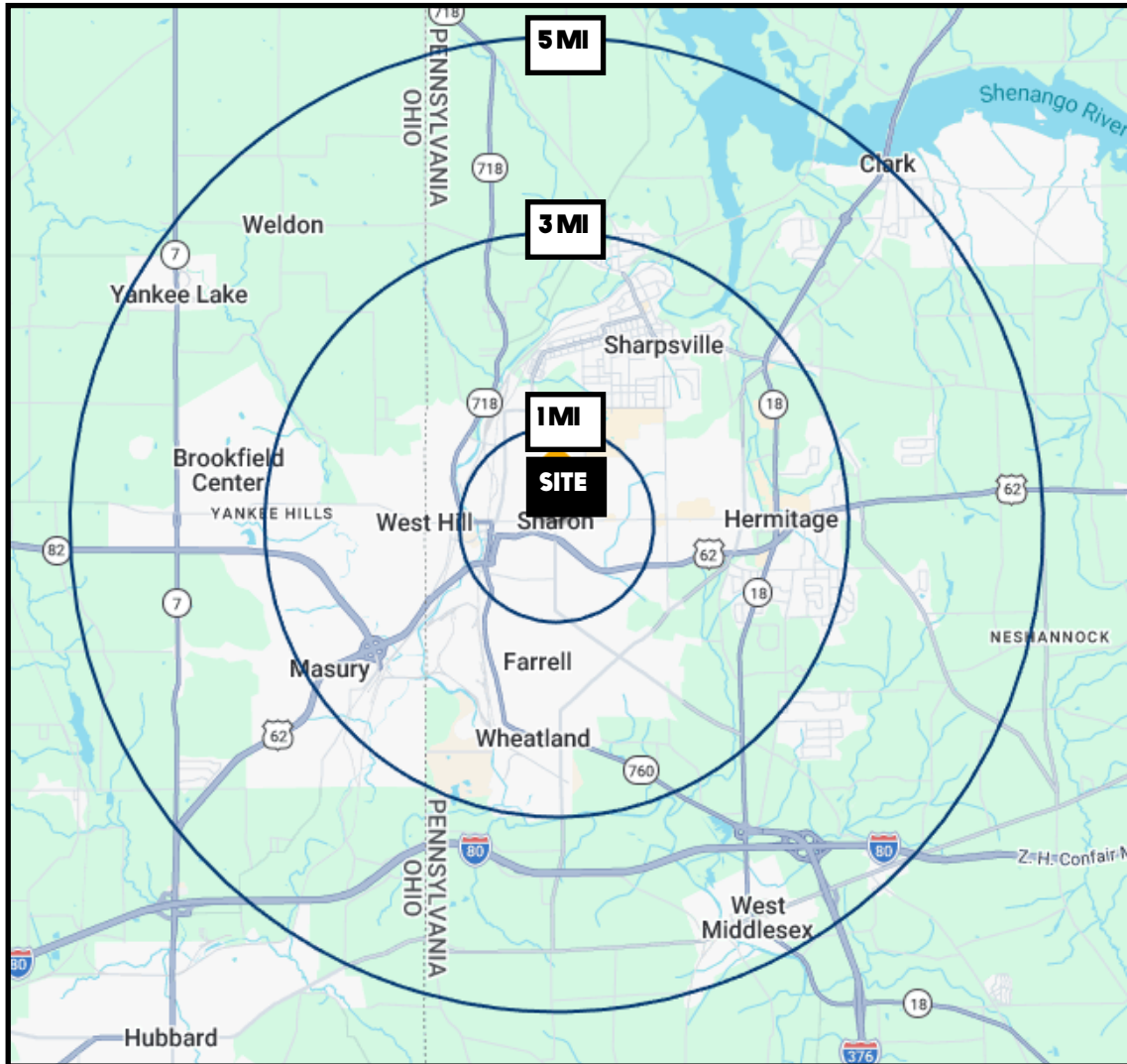
www.PLATZREALTYGROUP.com



Office: 330.757.4889 | Fax: 330.294.5622 | 3830 Starr Centre Dr, Suite 2, Canfield, OH 44406

www.PLATZREALTYGROUP.com

The information presented was obtained from sources believed to be true and reliable. The Platz Realty Group makes no warranties or guarantees to the accuracy of the information.



DEMOGRAPHICS	1 MI	3 MI	5 MI
POPULATION	11,937	37,837	50,877
HOUSEHOLDS	5,180	16,752	22,468
MEDIAN AGE	41	44	46
AVERAGE HH INCOME	\$63,225	\$66,251	\$72,006

SITE INFORMATION

LOCATION	Sharon City Mercer County
PARCEL	71-30010
PROPERTY TYPE	Former Drug Store
PARKING	40 spaces
YEAR BUILT	2000
SIZE	13,650 SF on 1.24 acres
ASKING PRICE	\$1,200,000

Office: 330.757.4889 | Fax: 330.294.5622 | 3830 Starr Centre Dr, Suite 2, Canfield, OH 44406