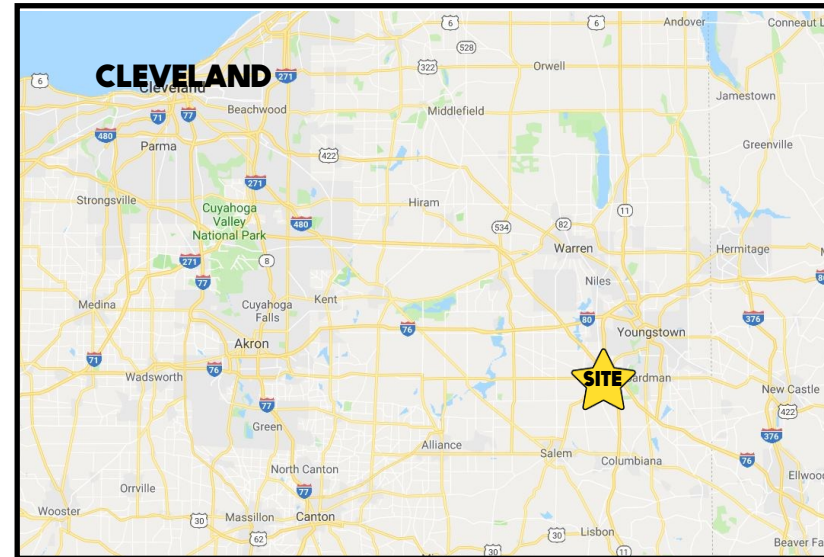


LOCATION

3731 Boardman Canfield Rd, Canfield, OH 44406



HIGHLIGHTS

- Professional office
- Ample parking
- High profile building on US 224 and Seville Dr
- Just west of Tippecanoe Rd
- Signage on Boardman Canfield Rd

TRAFFIC

Boardman Canfield Rd = 30,008 VPD

CONTACT

ADAM DIVEBISS

501.551.3817

adivebiss@platzrealtygroup.com

BILL KUTLICK

330.565.5701

bkutlick@platzrealtygroup.com

Office: 330.757.4889 | Fax: 330.294.5622 | 3830 Starr Centre Dr, Suite 2, Canfield, OH 44406

www.PLATZREALTYGROUP.com

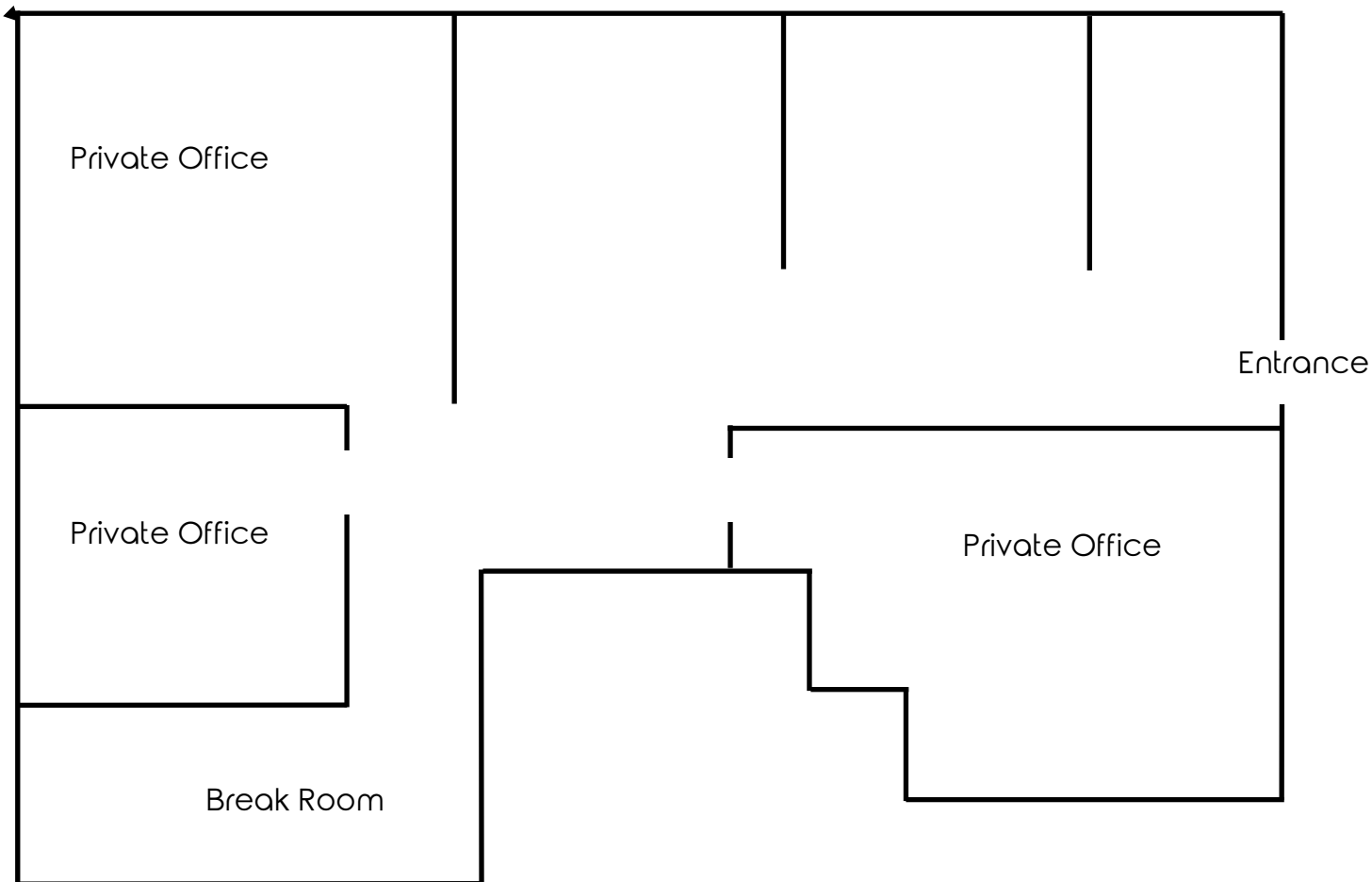


Office: 330.757.4889 | Fax: 330.294.5622 | 3830 Starr Centre Dr, Suite 2, Canfield, OH 44406

www.PLATZREALTYGROUP.com

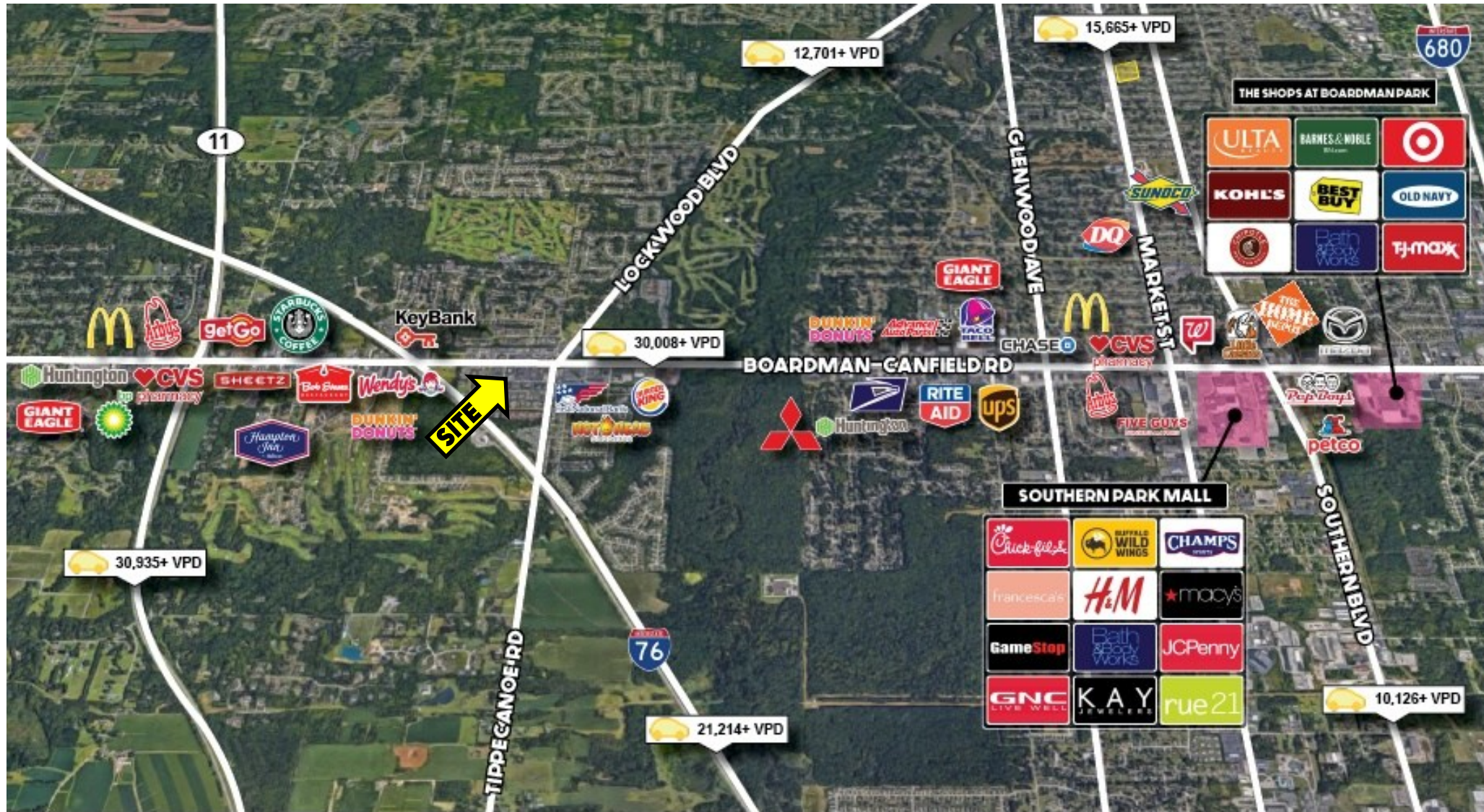
The information presented was obtained from sources believed to be true and reliable. The Platz Realty Group makes no warranties or guarantees to the accuracy of the information.

[3D Tour](#)



Office: 330.757.4889 | Fax: 330.294.5622 | 3830 Starr Centre Dr, Suite 2, Canfield, OH 44406

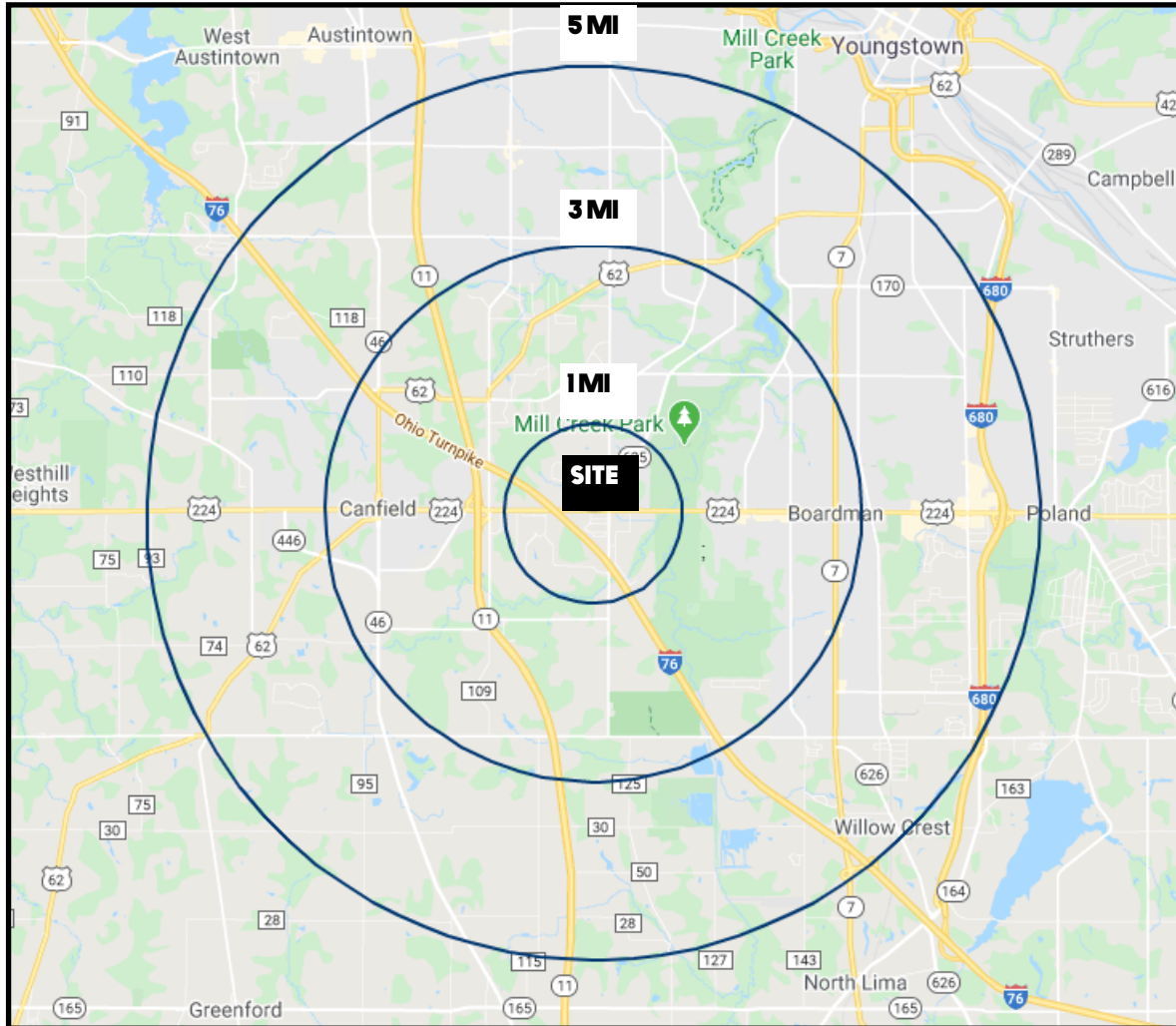
www.PLATZREALTYGROUP.com



Office: 330.757.4889 | Fax: 330.294.5622 | 3830 Starr Centre Dr, Suite 2, Canfield, OH 44406

www.PLATZREALTYGROUP.com

The information presented was obtained from sources believed to be true and reliable. The Platz Realty Group makes no warranties or guarantees to the accuracy of the information.



DEMOGRAPHICS	1 MI	3 MI	5 MI
POPULATION	5,431	35,280	97,246
HOUSEHOLDS	2,338	15,339	41,599
AVERAGE AGE	42	43	43
MEDIAN HH INCOME	\$78,058	\$68,914	\$54,190

SITE INFORMATION

LOCATION	Canfield Township Mahoning County
PROPERTY TYPE	Professional Office
SF AVAILABLE	1,400 SF
UTILITIES	Separately metered
YEAR BUILT	1989
SIGNAGE	On US 224
RENT	\$15.00/SF NNN

Office: 330.757.4889 | Fax: 330.294.5622 | 3830 Starr Centre Dr, Suite 2, Canfield, OH 44406