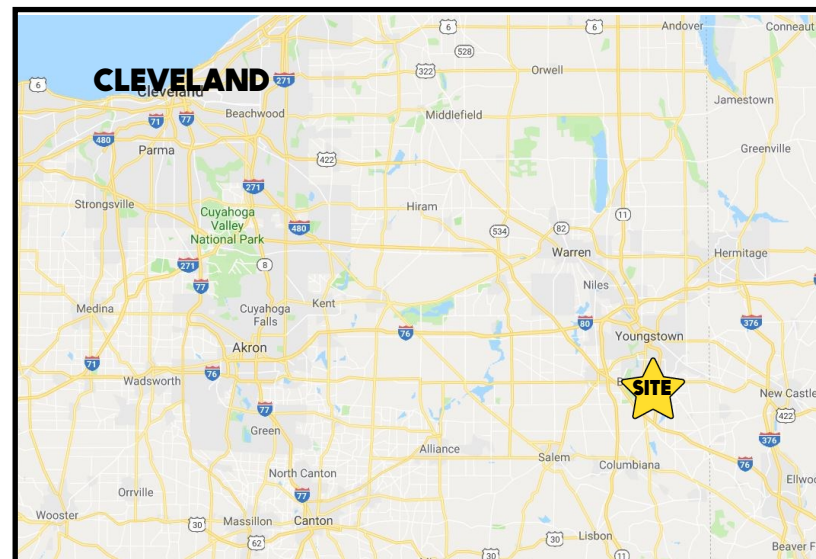


LOCATION

935 Trailwood, Unit C, Boardman, OH



HIGHLIGHTS

- Conveniently located off South Ave, just north of US 224
- 2,703 SF medical office in Boardman, OH
- 2 bathrooms, 4 exam rooms, main office, waiting area, reception
- Lots of storage
- Full basement

3D TOUR [Tour](#)

CONTACT

MATT WILSON

330.347.9677

mwilson@platzrealtygroup.com

ADAM DIVELBISS

501.551.3817

adivelbiss@platzrealtygroup.com

Office: 330.757.4889 | Fax: 330.294.5622 | 3830 Starr Centre Dr, Suite 2, Canfield, OH 44406

www.PLATZREALTYGROUP.com



Office: 330.757.4889 | Fax: 330.294.5622 | 3830 Starr Centre Dr, Suite 2, Canfield, OH 44406

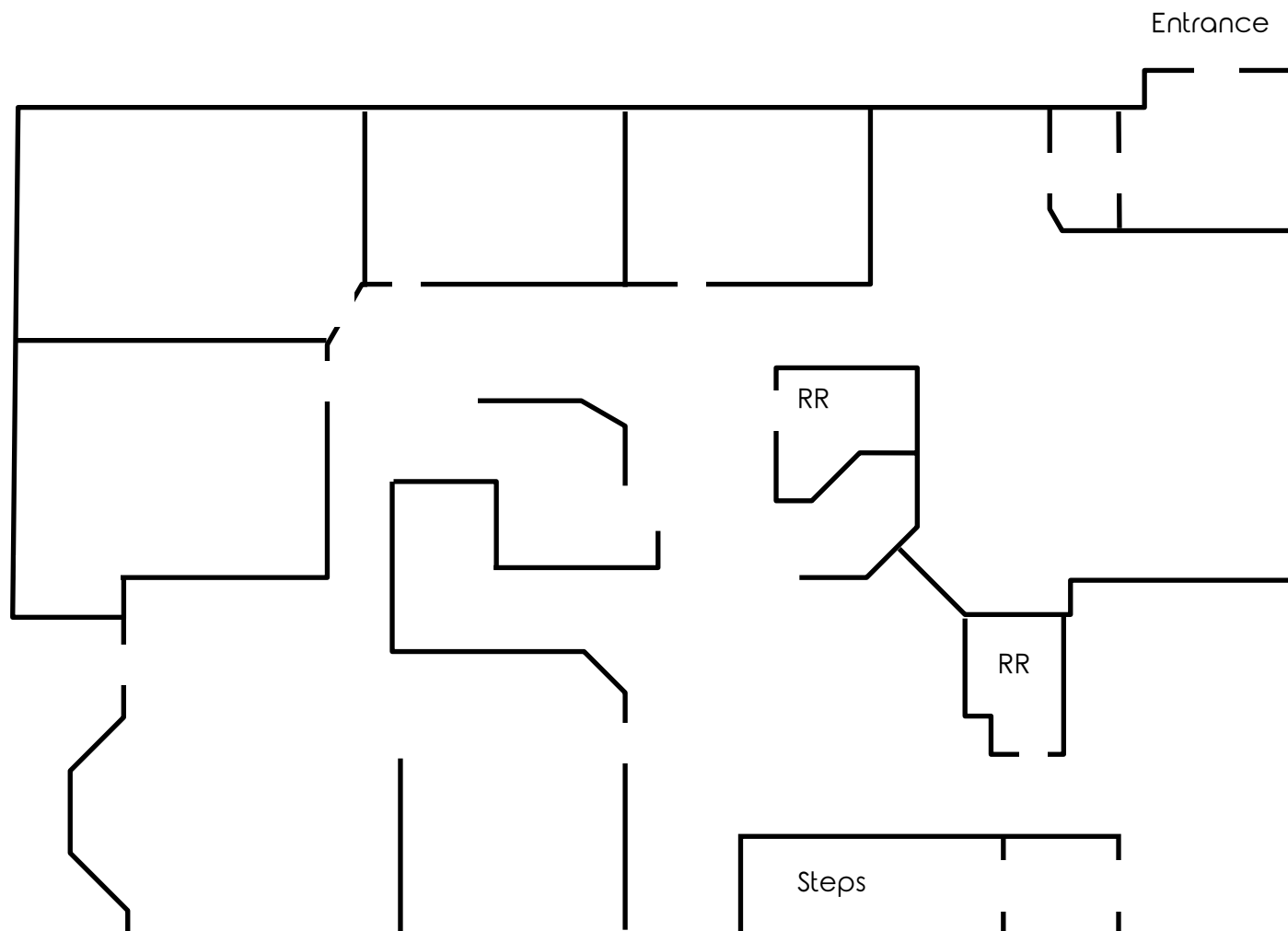
www.PLATZREALTYGROUP.com



Office: 330.757.4889 | Fax: 330.294.5622 | 3830 Starr Centre Dr, Suite 2, Canfield, OH 44406

www.PLATZREALTYGROUP.com

The information presented was obtained from sources believed to be true and reliable. The Platz Realty Group makes no warranties or guarantees to the accuracy of the information.



Office: 330.757.4889 | Fax: 330.294.5622 | 3830 Starr Centre Dr, Suite 2, Canfield, OH 44406

www.PLATZREALTYGROUP.com

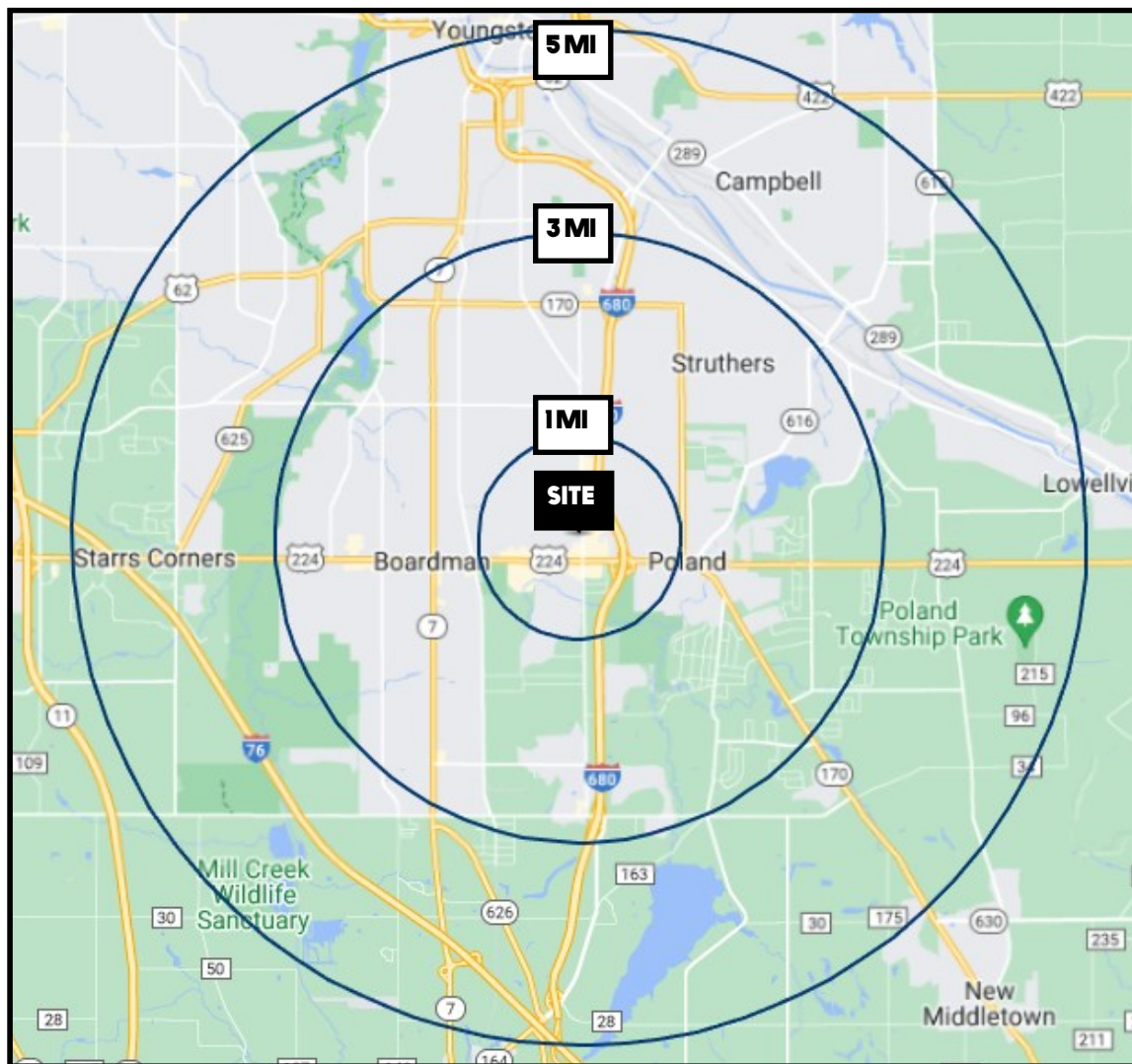


Office: 330.757.4889 | Fax: 330.294.5622 | 3768 Boardman Canfield Rd, Canfield, OH 44406

www.PLATZREALTYGROUP.com

The information presented was obtained from sources believed to be true and reliable. The Platz Realty Group makes no warranties or guarantees to the accuracy of the information.

SITE INFORMATION



DEMOGRAPHICS	1MI	3MI	5MI
POPULATION	5,498	61,499	110,542
HOUSEHOLDS	2,349	26,051	46,535
MEDIAN AGE	47	44	44
AVERAGE HH INCOME	\$76,319	\$67,239	\$64,892

SITE INFORMATION	
LOCATION	Boardman Township Mahoning County
PROPERTY TYPE	Medical office
YEAR BUILT	1992
SIZE	Unit C: 2,703 SF
UTILITIES	Separately metered
CONDO FEE	TBD
RENT	\$12.00/SF NNN

Office: 330.757.4889 | Fax: 330.294.5622 | 3830 Starr Centre Dr, Suite 2, Canfield, OH 44406

www.PLATZREALTYGROUP.com