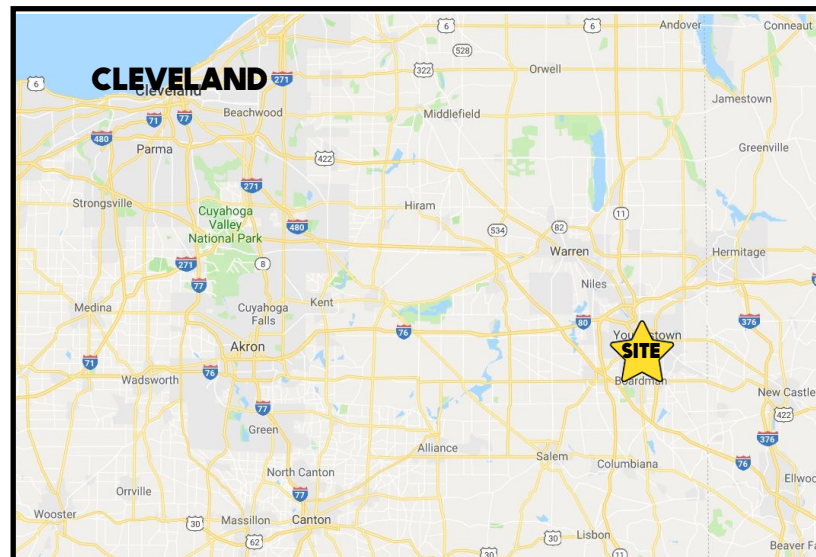


## LOCATION

4170 Market St, Boardman, OH 44512



## TRAFFIC

Market St = 16,665 VPD

## HIGHLIGHTS

- Approximately 600 SF retail space
- Front door parking
- Next to TR Party and Omni Carpet
- Heavy daytime traffic
- Just south of Midlothian Blvd

## CONTACT

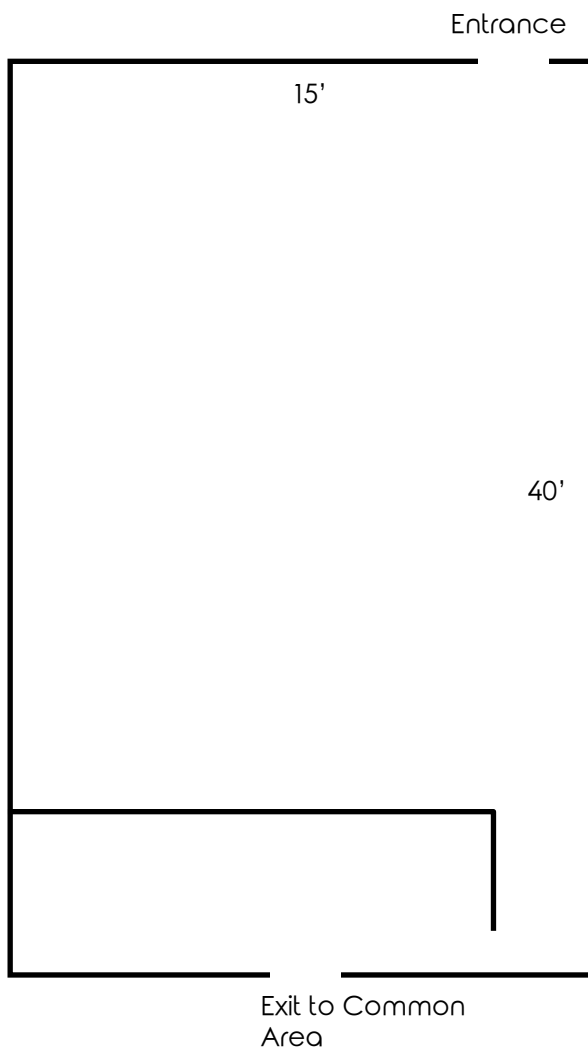
**THERESA MORSE**

330.518.6082

[tmorse@platzrealtygroup.com](mailto:tmorse@platzrealtygroup.com)

Office: 330.757.4889 | Fax: 330.294.5622 | 3830 Starr Centre Dr, Suite 2, Canfield, OH 44406

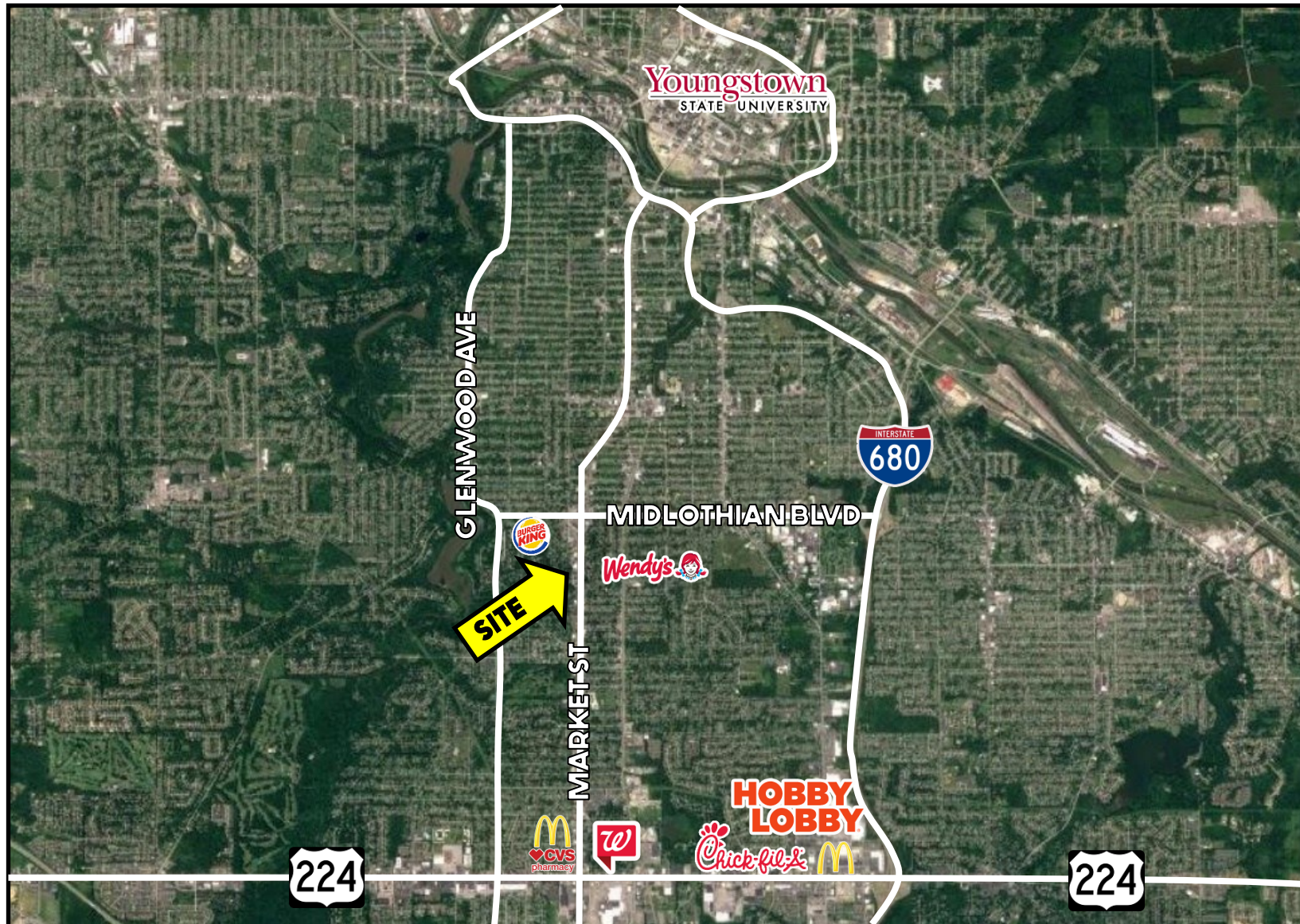
**[www.PLATZREALTYGROUP.com](http://www.PLATZREALTYGROUP.com)**



Office: 330.757.4889 | Fax: 330.294.5622 | 3830 Starr Centre Dr, Suite 2, Canfield, OH 44406

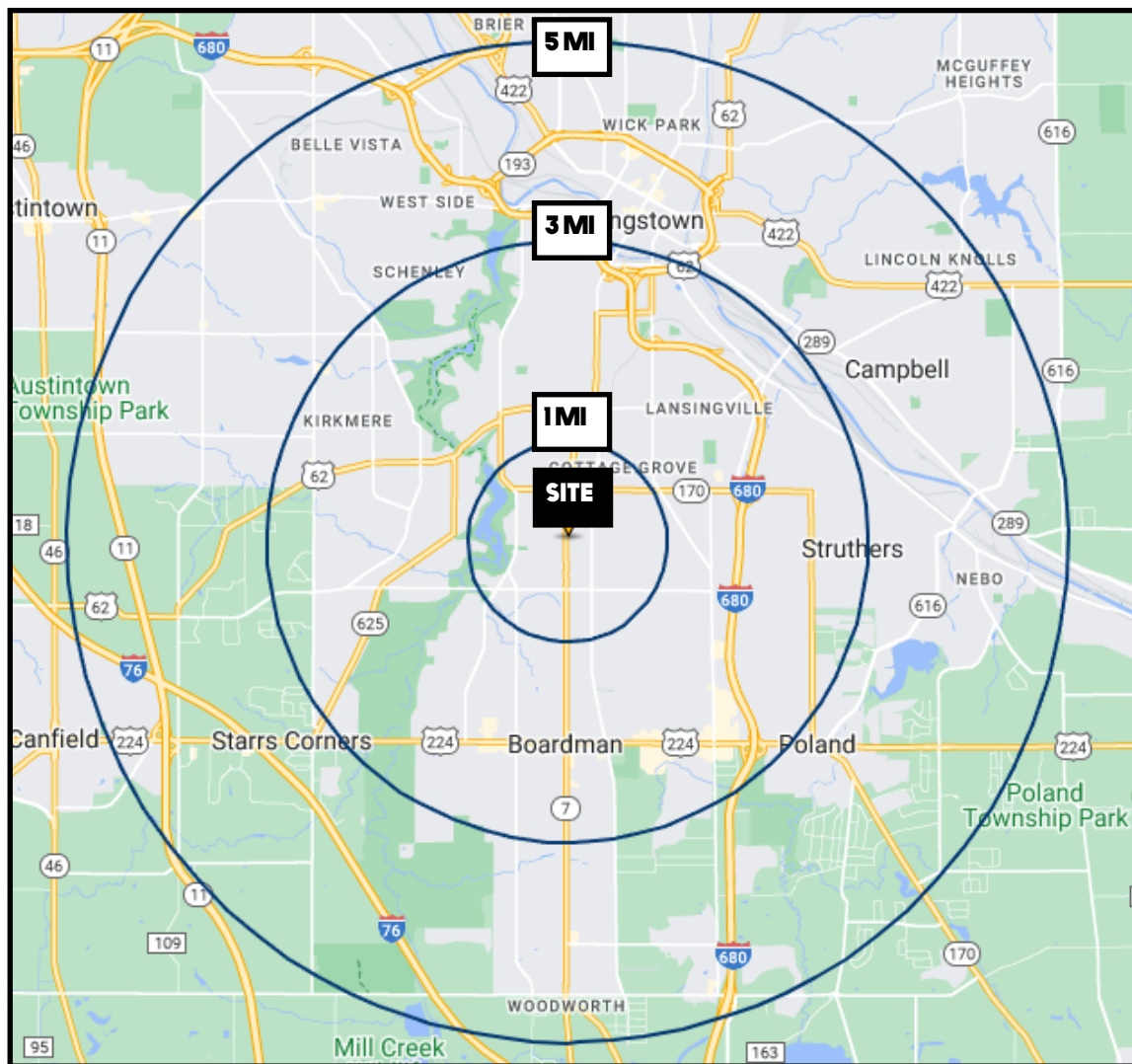
**[www.PLATZREALTYGROUP.com](http://www.PLATZREALTYGROUP.com)**





Office: 330.757.4889 | Fax: 330.294.5622 | 3830 Starr Centre Dr, Suite 2, Canfield, OH 44406

**[www.PLATZREALTYGROUP.com](http://www.PLATZREALTYGROUP.com)**



DEMOGRAPHICS	1 MI	3 MI	5 MI
<b>POPULATION</b>	11,665	65,714	149,081
<b>HOUSEHOLDS</b>	4,866	28,171	61,721
<b>MEDIAN AGE</b>	39	43	43
<b>AVERAGE HH INCOME</b>	\$55,370	\$58,289	\$59,958

SITE INFORMATION	
<b>LOCATION</b>	Boardman Township Mahoning County
<b>PROPERTY TYPE</b>	Retail Plaza
<b>ZONING</b>	North Market Business
<b>SIZE</b>	Available: 600 SF
<b>SIGNAGE</b>	Building signage
<b>PARKING</b>	Front door parking
<b>RENT</b>	\$13.00/SF Gross + electric

Office: 330.757.4889 | Fax: 330.294.5622 | 3830 Starr Centre Dr, Suite 2, Canfield, OH 44406

**www.PLATZREALTYGROUP.com**