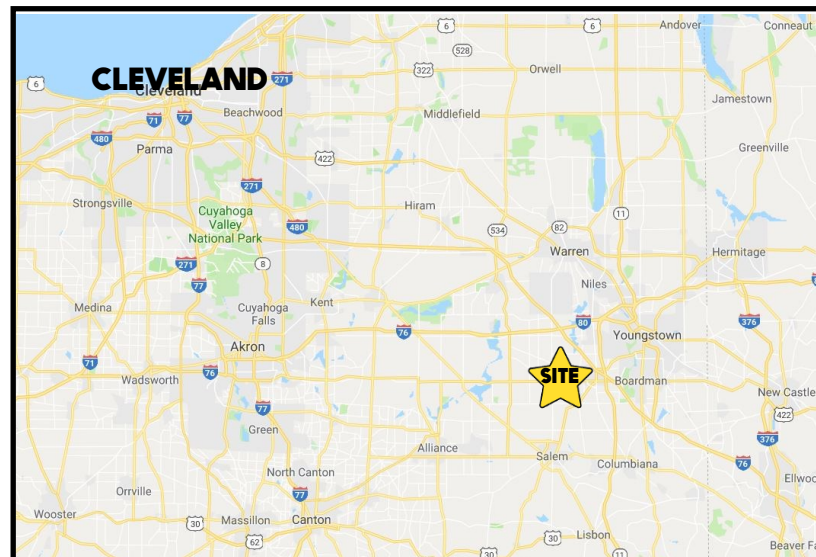


### LOCATION

550 E Main Street, Canfield, OH 44406



### TRAFFIC

Main St (US 224)= 17,938 VPD

### HIGHLIGHTS

- First floor office space by Giant Eagle
- Great visibility with high daily traffic counts
- Side units have shared entrance and restrooms
- Less than 1 mile to SR 11 ramp
- Rent includes utilities (except phone/Internet)

### CONTACT

**THERESA MORSE**

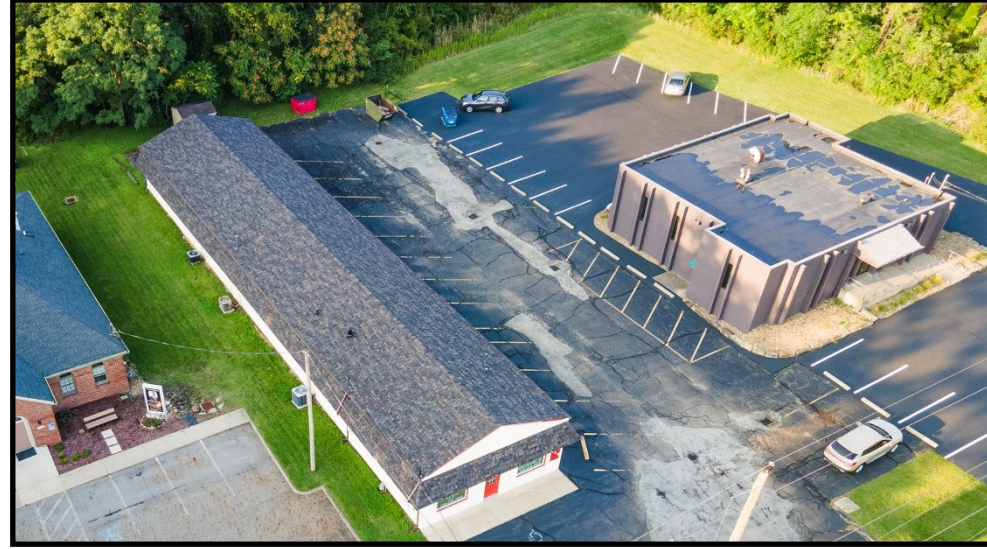
330.518.6082

[tmorse@platzrealtygroup.com](mailto:tmorse@platzrealtygroup.com)

Office: 330.757.4889 | Fax: 330.294.5622 | 3830 Starr Centre Dr, Suite 2, Canfield, OH 44406

**[www.PLATZREALTYGROUP.com](http://www.PLATZREALTYGROUP.com)**





Office: 330.757.4889 | Fax: 330.294.5622 | 3830 Starr Centre Dr, Suite 2, Canfield, OH 44406

**[www.PLATZREALTYGROUP.com](http://www.PLATZREALTYGROUP.com)**

The information presented was obtained from sources believed to be true and reliable. The Platz Realty Group makes no warranties or guarantees to the accuracy of the information.

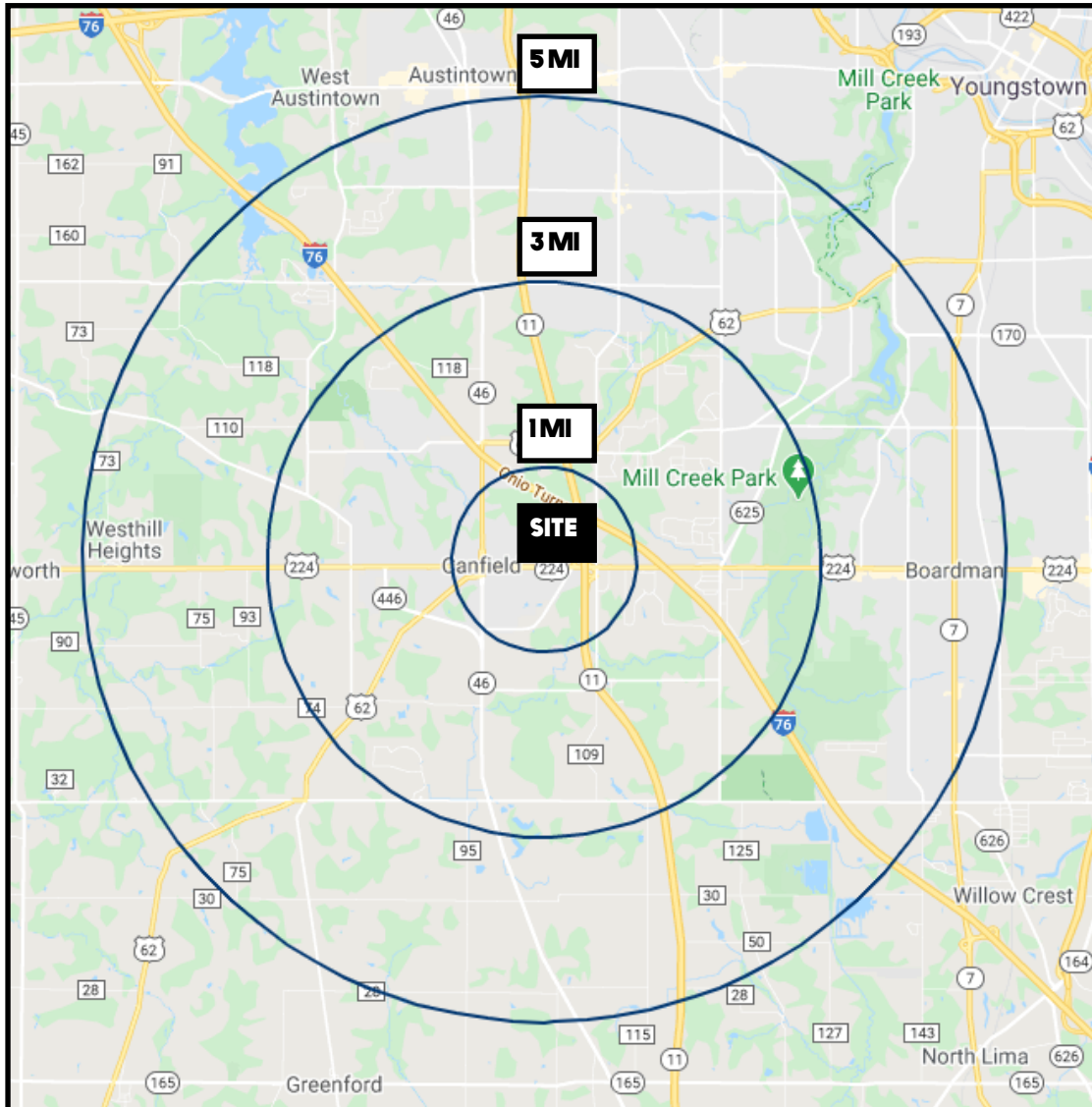




Office: 330.757.4889 | Fax: 330.294.5622 | 3830 Starr Centre Dr, Suite 2, Canfield, OH 44406

**[www.PLATZREALTYGROUP.com](http://www.PLATZREALTYGROUP.com)**

The information presented was obtained from sources believed to be true and reliable. The Platz Realty Group makes no warranties or guarantees to the accuracy of the information.



DEMOGRAPHICS	1 MI	3 MI	5 MI
<b>POPULATION</b>	3,681	22,349	77,568
<b>HOUSEHOLDS</b>	1,637	9,185	33,371
<b>AVERAGE AGE</b>	45	43	43
<b>MEDIAN HH INCOME</b>	\$70,790	\$77,754	\$58,404

SITE INFORMATION	
<b>LOCATION</b>	Canfield City Mahoning County
<b>PROPERTY TYPE</b>	Office
<b>AVAILABLE</b>	390 SF: \$1,000/month Gross rent - includes utilities Internet + phone not included Shared restrooms
<b>SIGNAGE</b>	Pylon signage available

Office: 330.757.4889 | Fax: 330.294.5622 | 3830 Starr Centre Dr, Suite 2, Canfield, OH 44406

**www.PLATZREALTYGROUP.com**