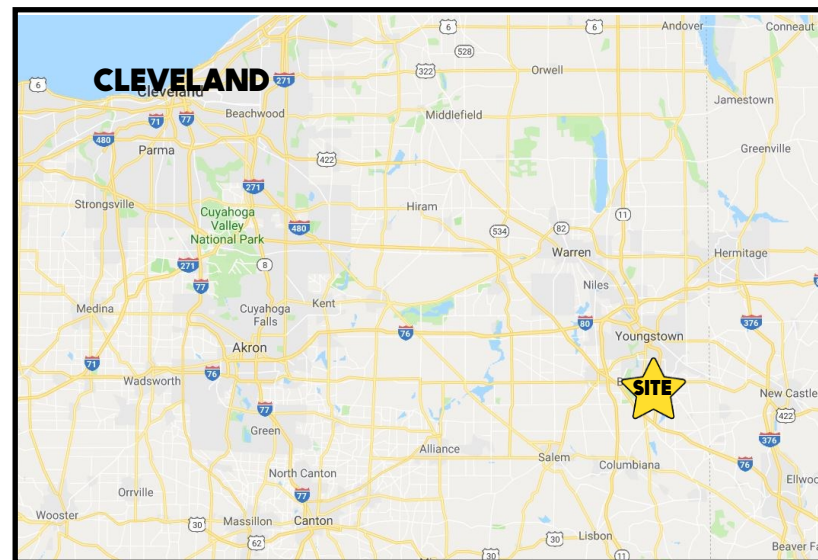


## LOCATION

7510 Market St, Boardman, OH 44512



## TRAFFIC

Market St = 20,297 VPD

## HIGHLIGHTS

- Two story retail / office building on Market St
- Very bright with lots of natural light
- By Boardman High School
- High visibility, across from Southern Park Mall
- High traffic counts

## CONTACT

### ADAM DIVEBISS

501.551.3817

adivebiss@platzrealtygroup.com

### MATT WILSON

330.347.9677

mwilson@platzrealtygroup.com

Office: 330.757.4889 | Fax: 330.294.5622 | 3830 Starr Centre Dr, Suite 2, Canfield, OH 44406

[www.PLATZREALTYGROUP.com](http://www.PLATZREALTYGROUP.com)



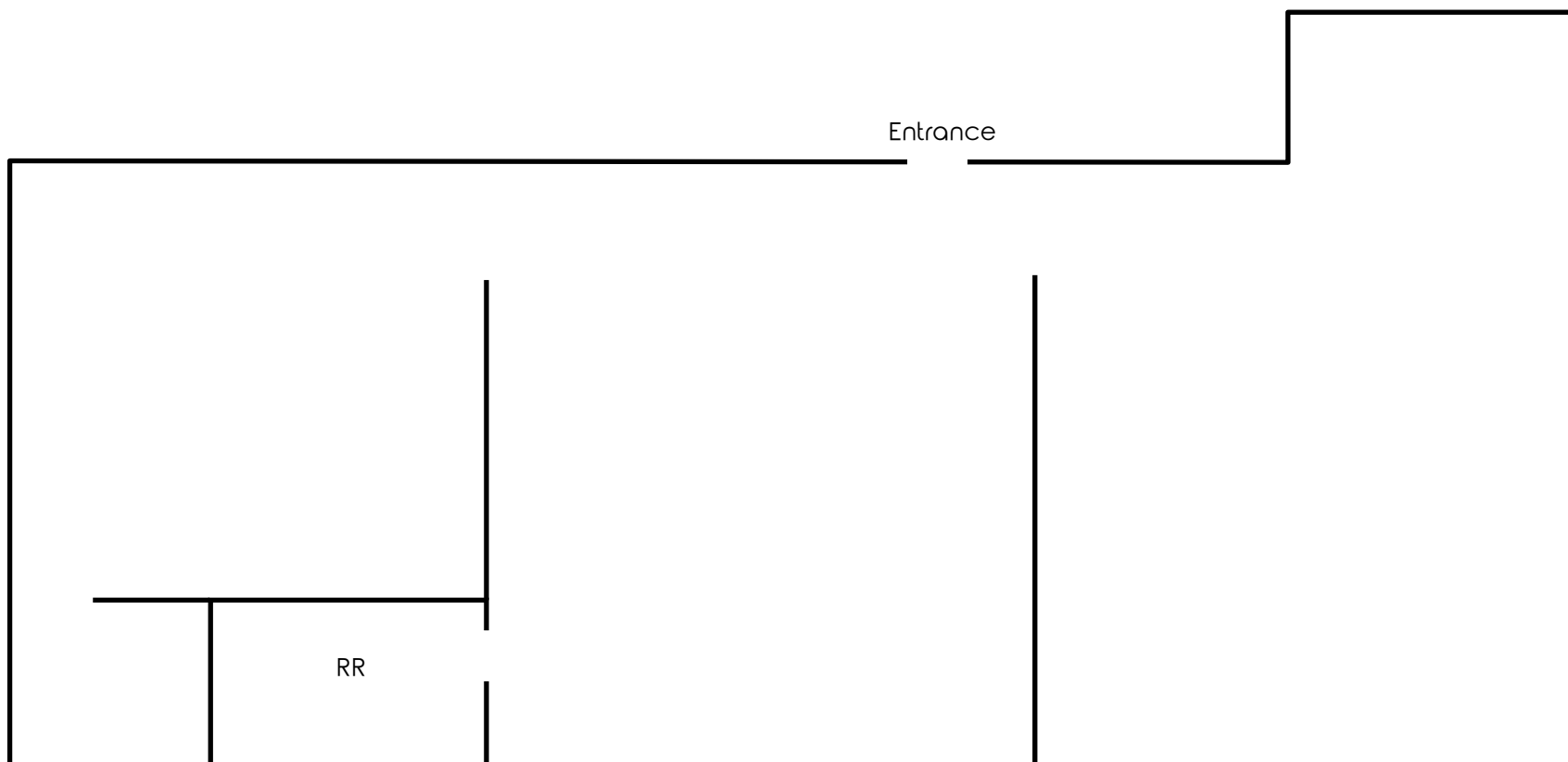


Office: 330.757.4889 | Fax: 330.294.5622 | 3830 Starr Centre Dr, Suite 2, Canfield, OH 44406

**[www.PLATZREALTYGROUP.com](http://www.PLATZREALTYGROUP.com)**

The information presented was obtained from sources believed to be true and reliable. The Platz Realty Group makes no warranties or guarantees to the accuracy of the information.

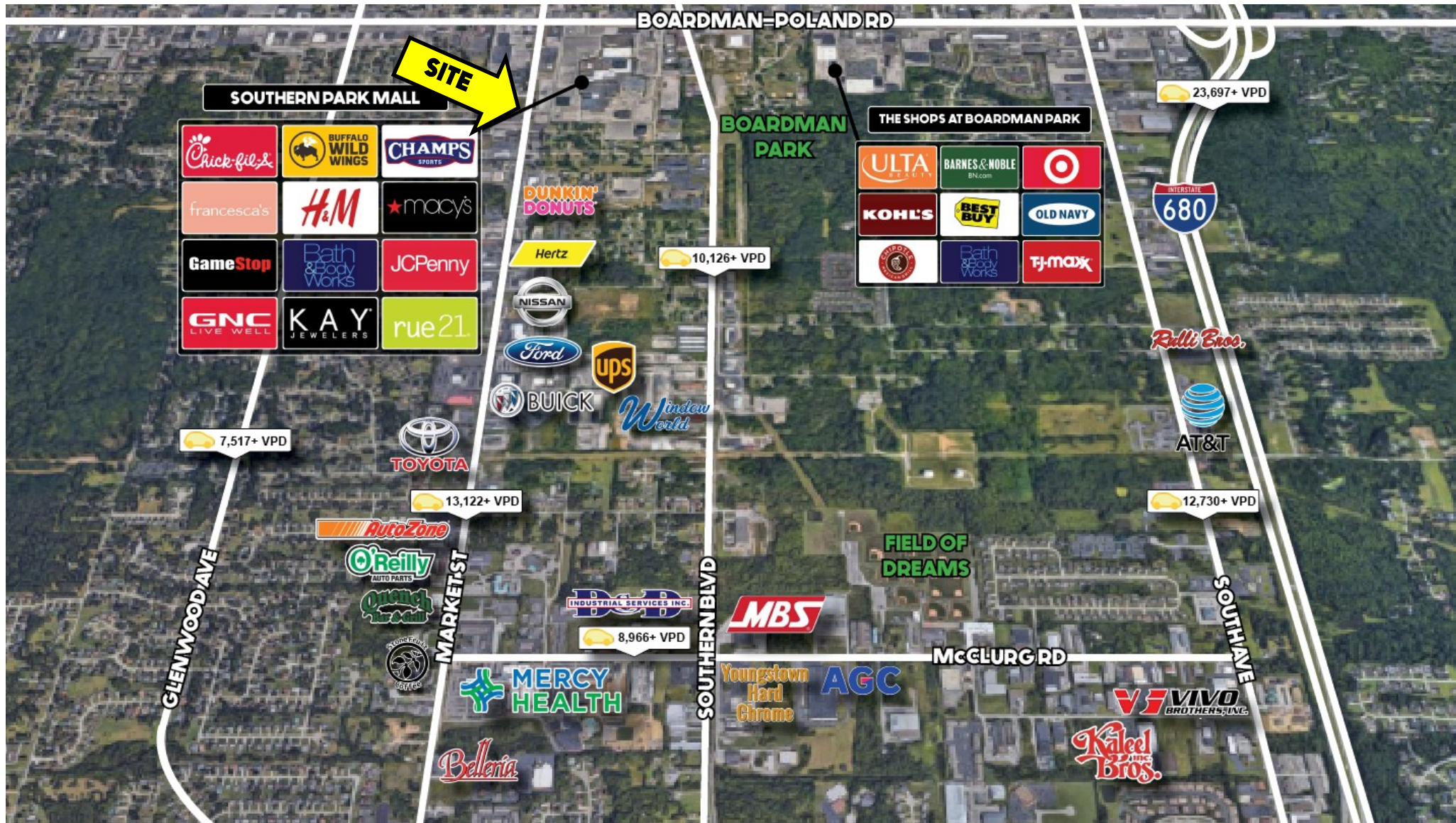
**3D TOUR** [Suite 8](#)



Office: 330.757.4889 | Fax: 330.294.5622 | 3830 Starr Centre Dr, Suite 2, Canfield, OH 44406

**[www.PLATZREALTYGROUP.com](http://www.PLATZREALTYGROUP.com)**



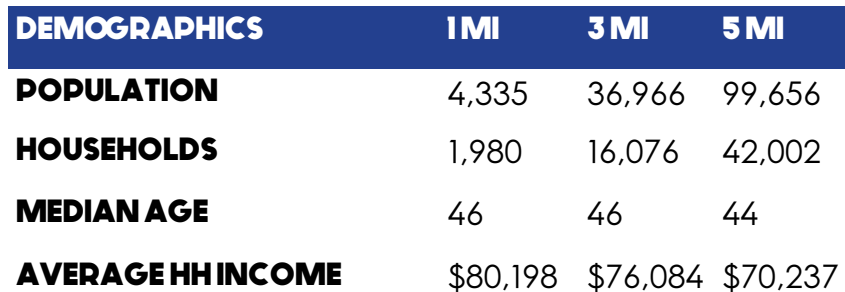


Office: 330.757.4889 | Fax: 330.294.5622 | 3830 Starr Centre Dr, Suite 2, Canfield, OH 44406

**www.PLATZREALTYGROUP.com**

The information presented was obtained from sources believed to be true and reliable. The Platz Realty Group makes no warranties or guarantees to the accuracy of the information.





<b>LOCATION</b>	Boardman Township Mahoning County
<b>PARKING</b>	On site front door parking
<b>AVAILABLE</b>	Second Floor Space Suite 8: 800 SF
<b>SIGNAGE</b>	Pylon Sign
<b>UTILITIES</b>	Separately metered
<b>RENT</b>	\$825/month Gross Utilities separately metered

**www.PLATZREALTYGROUP.com**

The information presented was obtained from sources believed to be true and reliable. The Platz Realty Group makes no warranties or guarantees to the accuracy of the information.