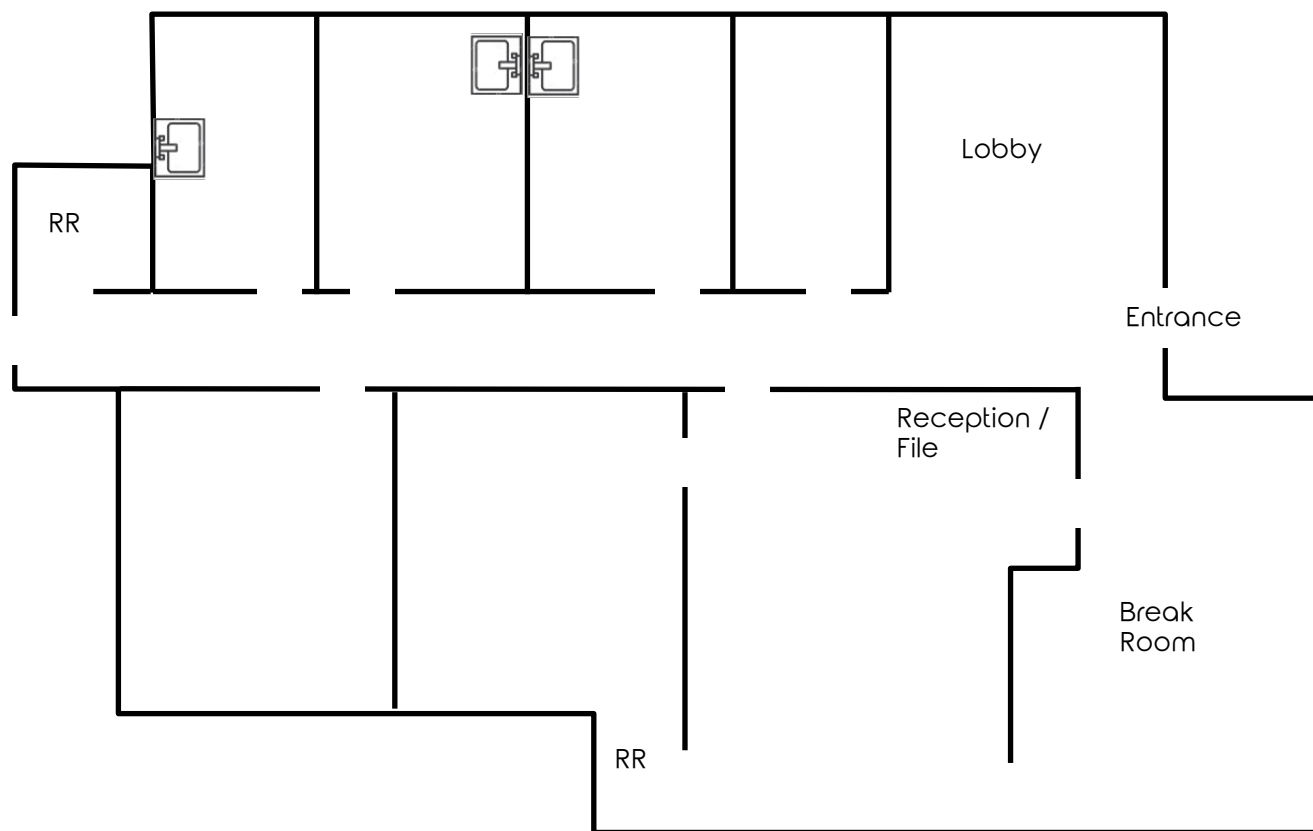




Office: 330.757.4889 | Fax: 330.294.5622 | 3830 Starr Centre Dr, Suite 2, Canfield, OH 44406

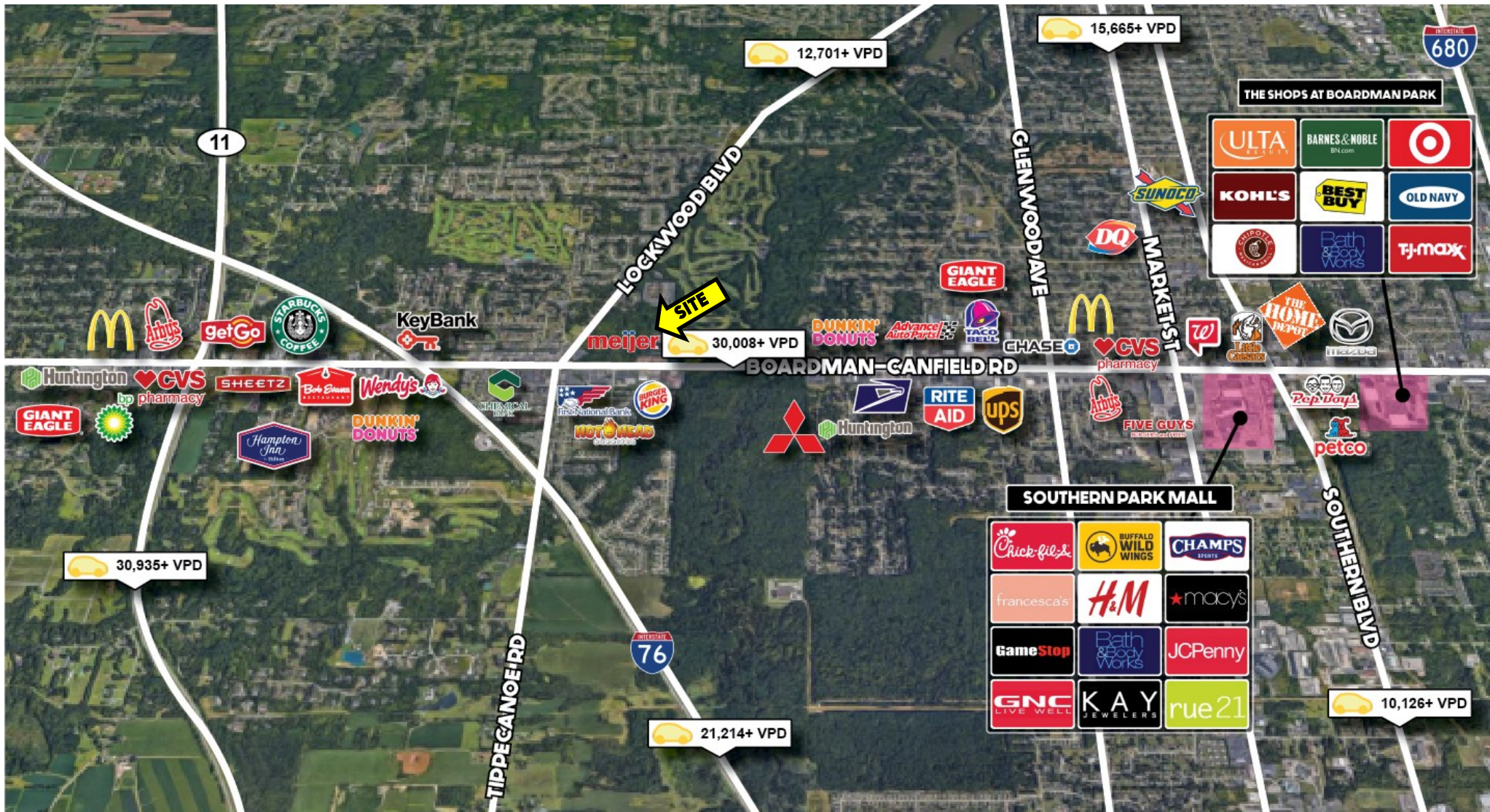
www.PLATZREALTYGROUP.com

The information presented was obtained from sources believed to be true and reliable. The Platz Realty Group makes no warranties or guarantees to the accuracy of the information.



Office: 330.757.4889 | Fax: 330.294.5622 | 3768 Boardman Canfield Rd, Canfield, OH 44406

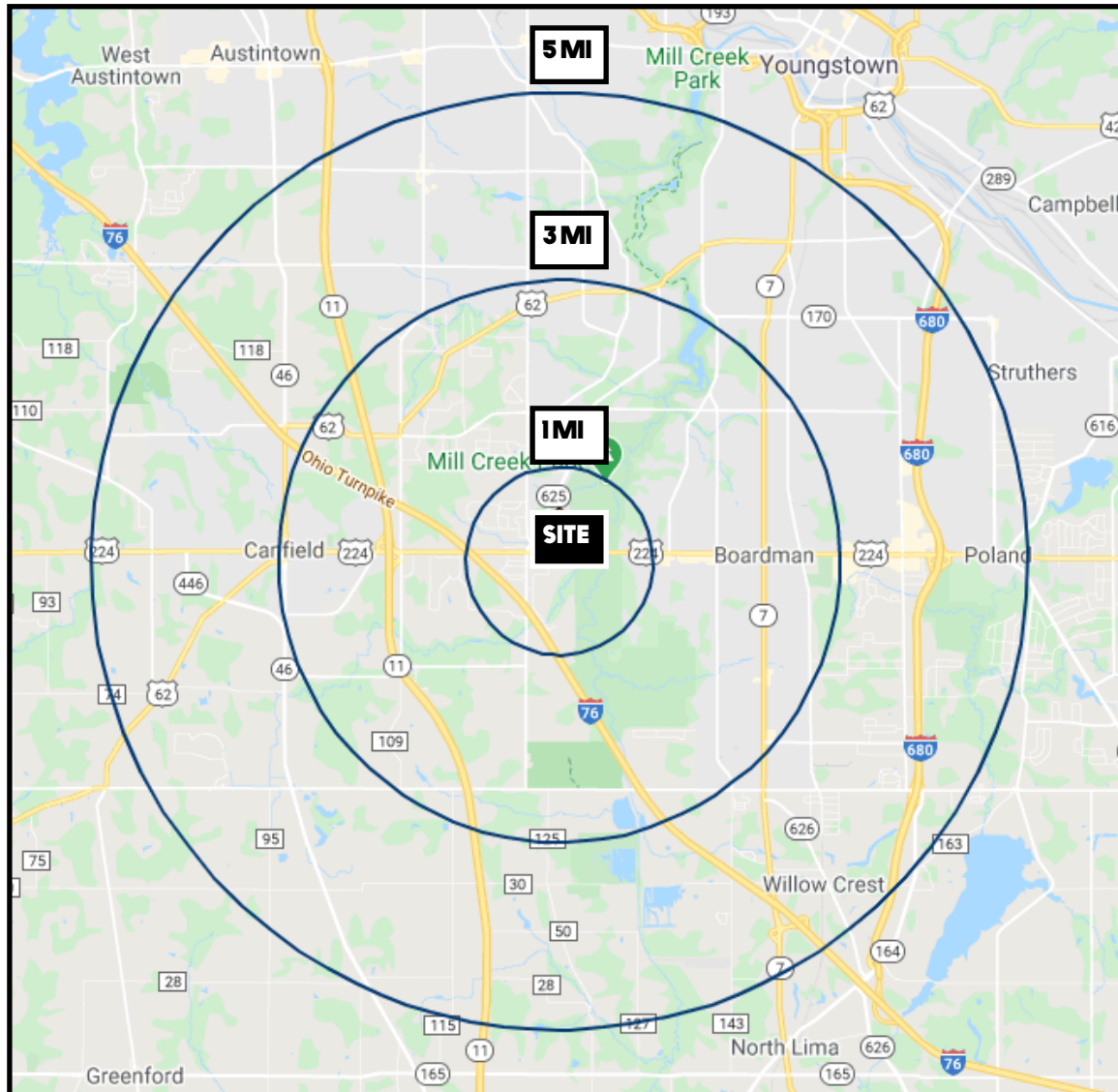
www.PLATZREALTYGROUP.com



Office: 330.757.4889 | Fax: 330.294.5622 | 3830 Starr Centre Dr, Suite 2, Canfield, OH 44406

www.PLATZREALTYGROUP.com

The information presented was obtained from sources believed to be true and reliable. The Platz Realty Group makes no warranties or guarantees to the accuracy of the information.



DEMOGRAPHICS	1 MI	3 MI	5 MI
POPULATION	5,268	37,839	102,641
HOUSEHOLDS	2,306	16,541	43,908
AVERAGE AGE	43	43	43
MEDIAN HH INCOME	\$76,294	\$65,267	\$53,844

SITE INFORMATION

LOCATION	Boardman Township Mahoning County
PROPERTY TYPE	Office / Medical
SIGNAGE	Building and pylon
PARKING	Front and rear parking
AVAILABLE	Rear/Side Medical: 1,860 SF \$11.00/SF NNN + \$4.00/SF Private Entrance and private restroom

Office: 330.757.4889 | Fax: 330.294.5622 | 3830 Starr Centre Dr, Suite 2, Canfield, OH 44406