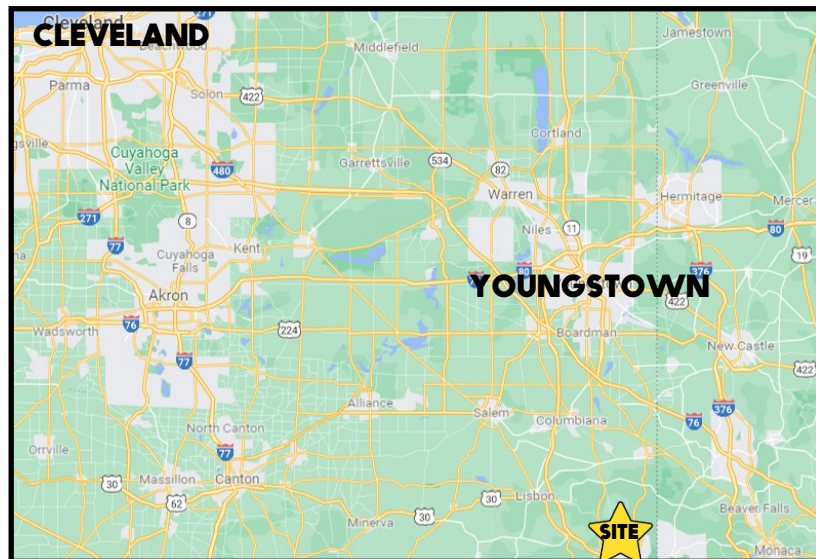


## LOCATION

15258 SR 170, East Liverpool, OH 43920



## TRAFFIC

SR 170 = 7,761 VPD

## HIGHLIGHTS

- Great visibility on SR 170
- To be replatted
- Ideal for school, daycare, office, medical, or retail uses
- Approximately 7.2 acres with easement access from SR 170

## CONTACT

**THERESA MORSE**

330.518.6082

tmorse@platzrealtygroup.com

Office: 330.757.4889 | Fax: 330.294.5622 | 3830 Starr Centre Dr, Suite 2, Canfield, OH 44406

**www.PLATZREALTYGROUP.com**



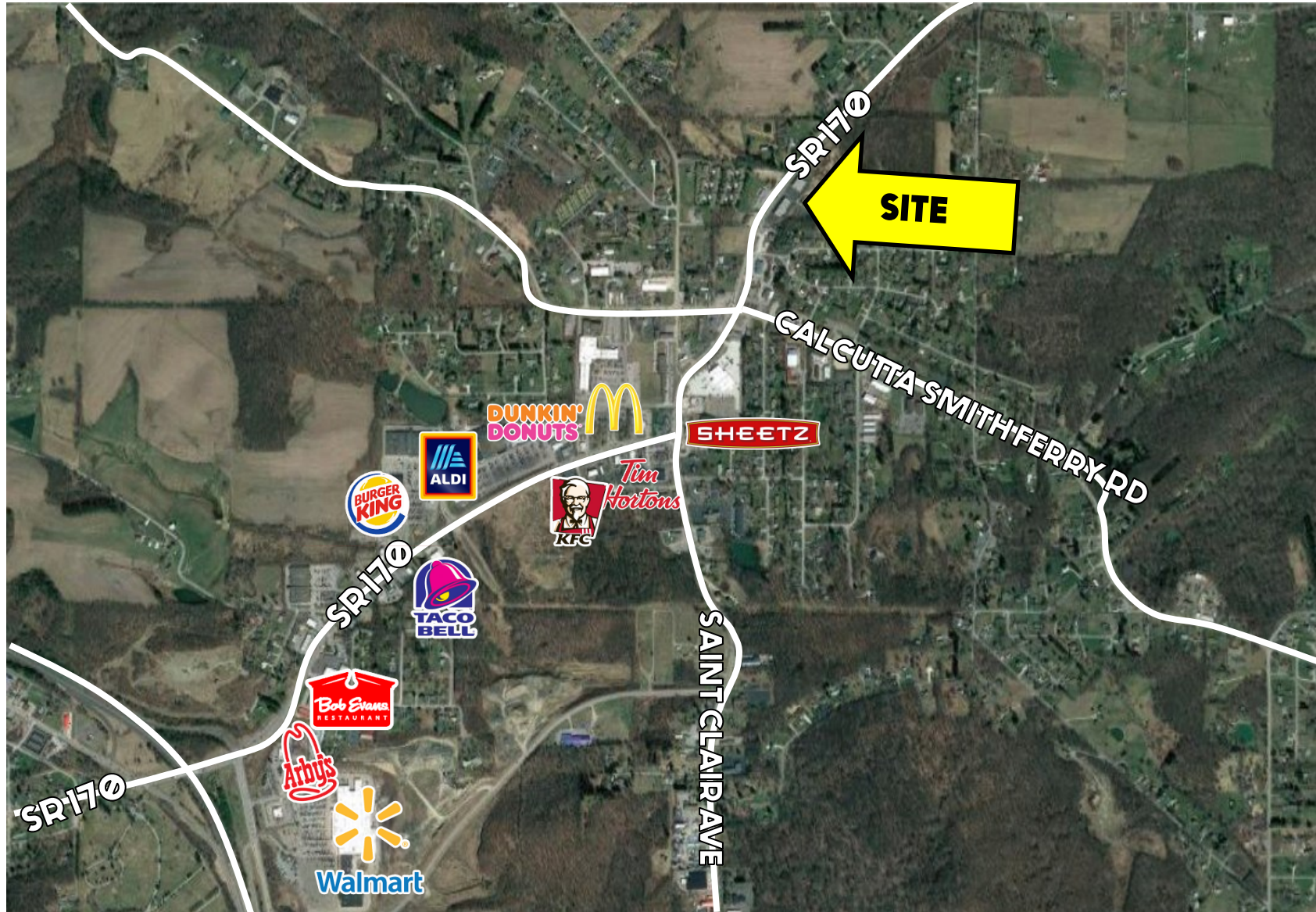
- Proposed replat
- Proposed easement



Office: 330.757.4889 | Fax: 330.294.5622 | 3830 Starr Centre Dr, Suite 2, Canfield, OH 44406

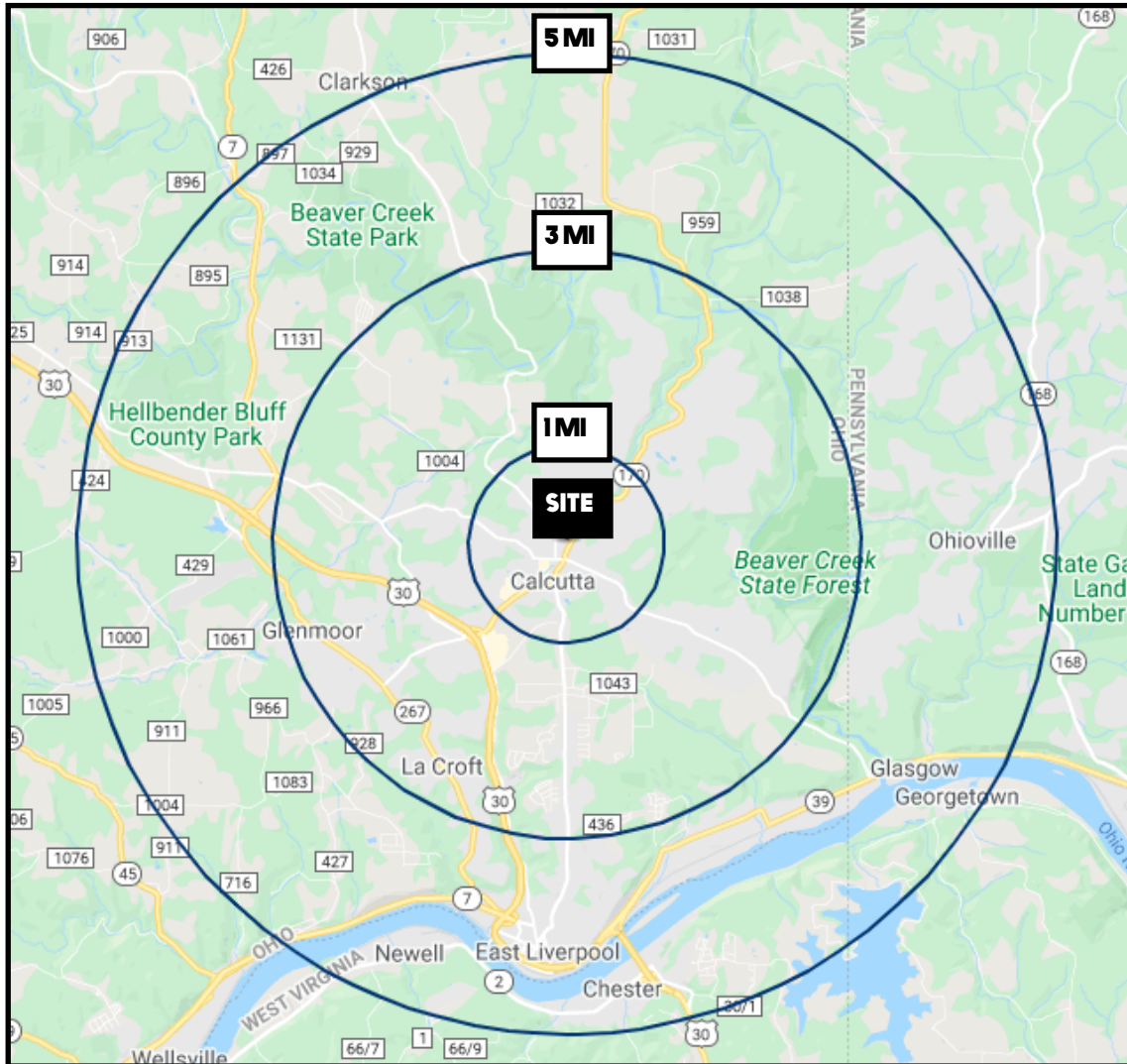
[www.PLATZREALTYGROUP.com](http://www.PLATZREALTYGROUP.com)





Office: 330.757.4889 | Fax: 330.294.5622 | 3830 Starr Centre Dr, Suite 2, Canfield, OH 44406

**[www.PLATZREALTYGROUP.com](http://www.PLATZREALTYGROUP.com)**



DEMOGRAPHICS	1 MI	3 MI	5 MI
<b>POPULATION</b>	2,189	11,349	30,203
<b>HOUSEHOLDS</b>	943	4,795	12,893
<b>MEDIAN AGE</b>	51	47	44
<b>AVERAGE HH INCOME</b>	\$72,998	\$69,798	\$61,610

SITE INFORMATION	
<b>LOCATION</b>	St Clair Township Columbiana County
<b>PARCEL</b>	61-00941.011 To be replatted
<b>PROPERTY TYPE</b>	Land
<b>ACREAGE</b>	7.2 acres To be replatted
<b>PRICE</b>	\$10,000/acre

Office: 330.757.4889 | Fax: 330.294.5622 | 3830 Starr Centre Dr, Suite 2, Canfield, OH 44406

**www.PLATZREALTYGROUP.com**