

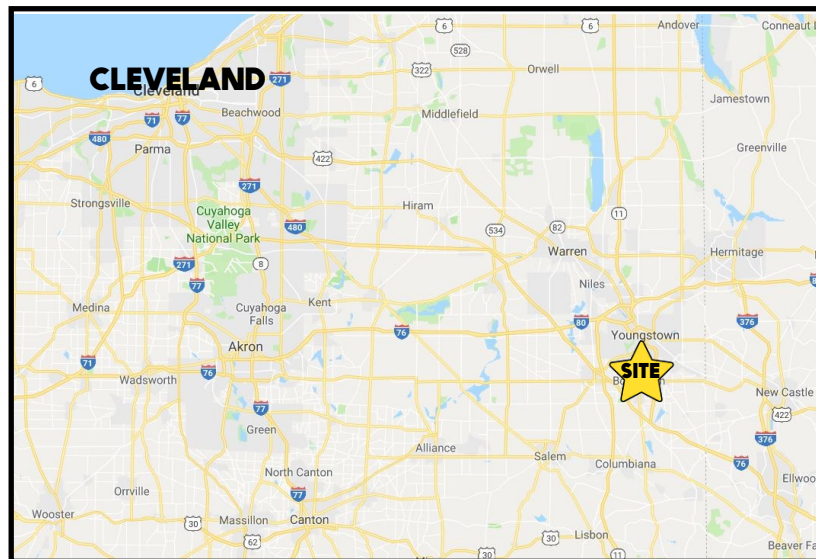
LOCATION

5815-5823 South Ave/1100 Mathews Rd, Boardman, OH 44512



HIGHLIGHTS

- 2.49 acres on the corner of Mathews Rd and South Ave
- Strong retail corner with access to South Ave + Mathews Rd
- South Ave northbound improved to 3 lanes of traffic
- 348' frontage on South Ave + 250' frontage on Mathews Rd
- 18'-20' ceiling height



TRAFFIC

Intersection: 30,346 VPD

CONTACT

MATT WILSON

330.347.9677

mwilson@platzrealtygroup.com

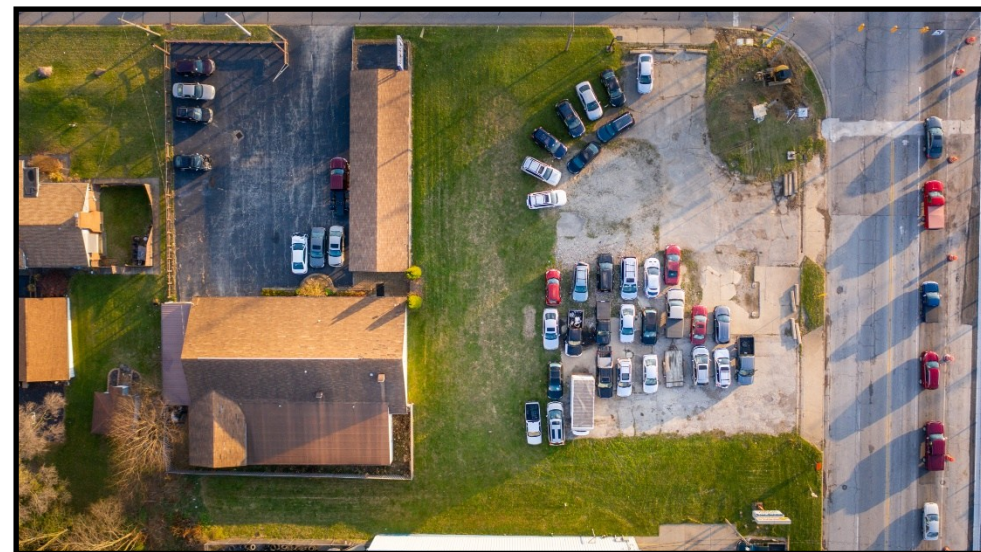
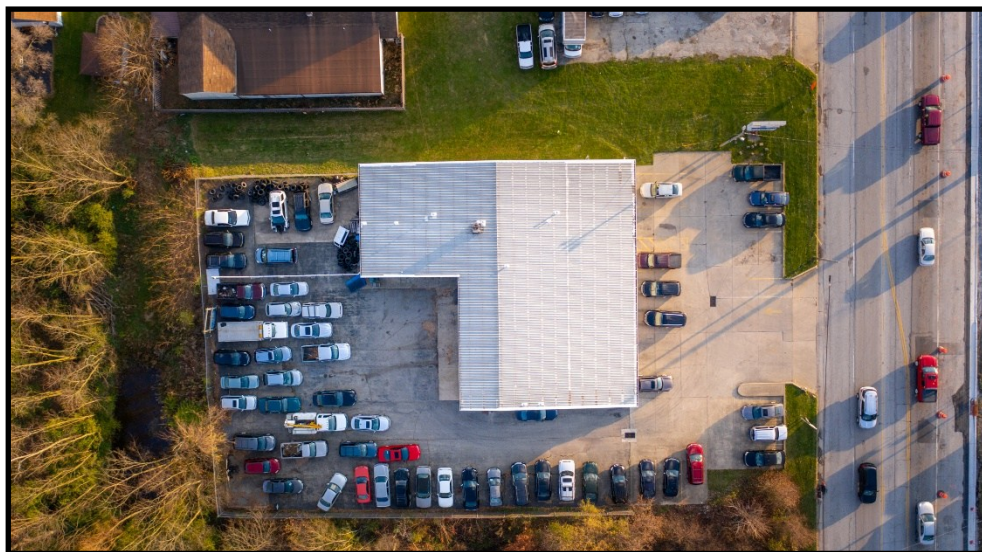
GARY LASKO

330.509.4546

glasko@platzrealtygroup.com

Office: 330.757.4889 | Fax: 330.294.5622 | 3830 Starr Centre Dr, Suite 2, Canfield, OH 44406

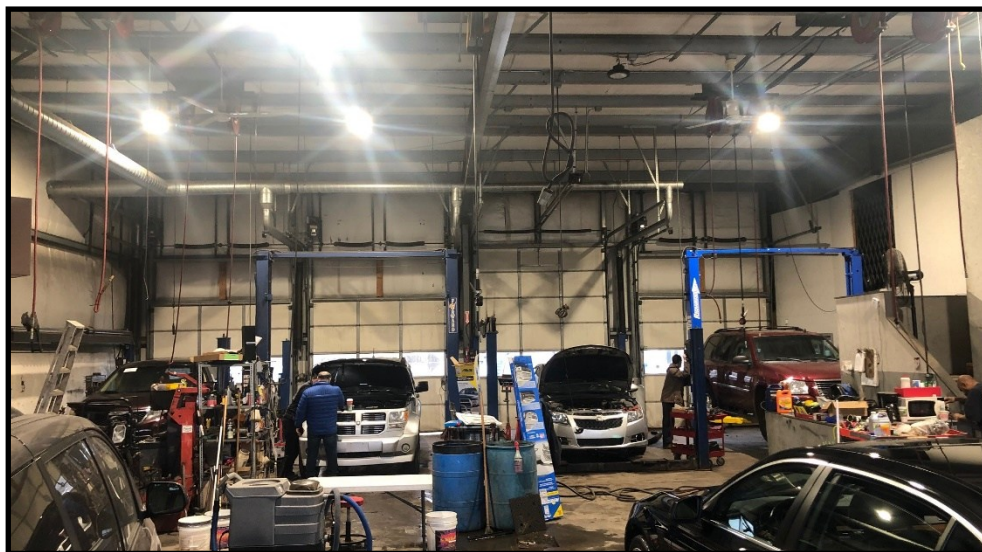
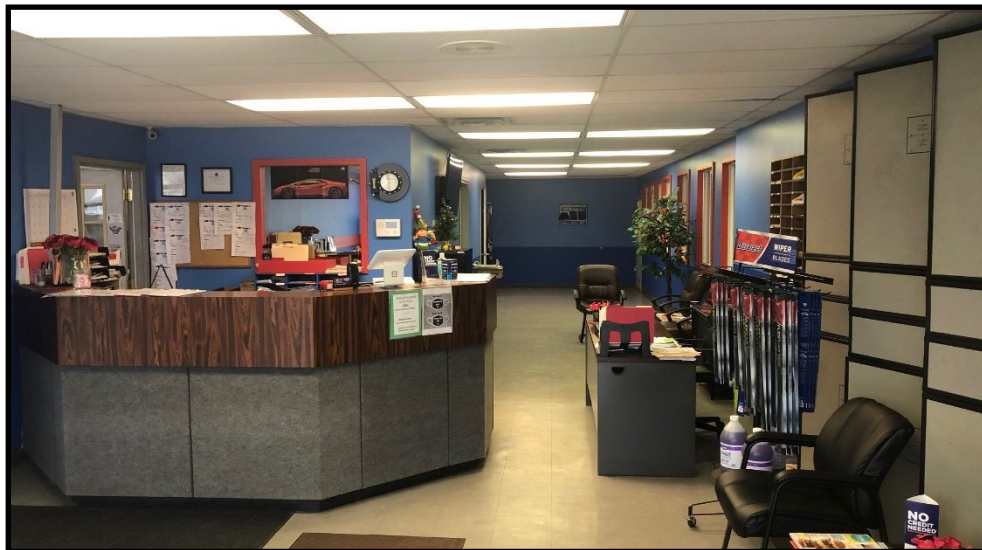
www.PLATZREALTYGROUP.com



Office: 330.757.4889 | Fax: 330.294.5622 | 3830 Starr Centre Dr, Suite 2, Canfield, OH 44406

www.PLATZREALTYGROUP.com

The information presented was obtained from sources believed to be true and reliable. The Platz Realty Group makes no warranties or guarantees to the accuracy of the information.



Office: 330.757.4889 | Fax: 330.294.5622 | 3830 Starr Centre Dr, Suite 2, Canfield, OH 44406

www.PLATZREALTYGROUP.com



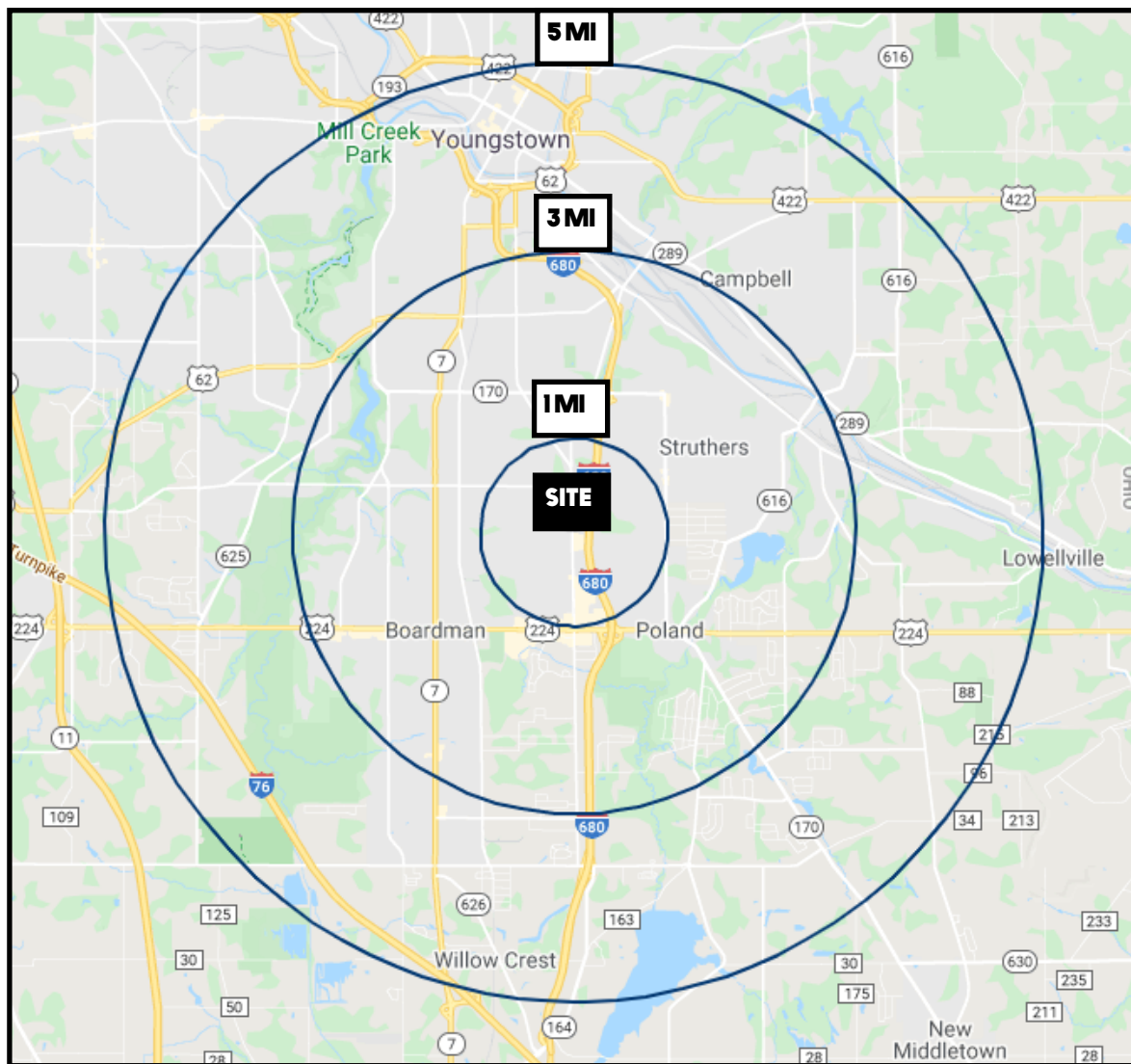
The information presented was obtained from sources believed to be true and reliable. The Platz Realty Group makes no warranties or guarantees to the accuracy of the information.



Office: 330.757.4889 | Fax: 330.294.5622 | 3830 Starr Centre Dr, Suite 2, Canfield, OH 44406

www.PLATZREALTYGROUP.com

SITE INFORMATION



DEMOGRAPHICS	1 MI	3 MI	5 MI
POPULATION	8,359	65,459	121,425
HOUSEHOLDS	3,673	27,583	50,991
MEDIAN AGE	46	42	43
AVERAGE HH INCOME	\$69,183	\$64,961	\$64,659

SITE INFORMATION	
LOCATION	Boardman Township Mahoning County
ZONING	GB
PARCELS	29-020-0-018, 019, 020
SIZE	5815 South: 7,236 SF 1100 Mathews: 3,200 SF
ACREAGE	2.49 acres
POWER	480 V 3 Phase
REAL ESTATE TAXES	\$13,039/year
PRICE	\$1,200,000

Office: 330.757.4889 | Fax: 330.294.5622 | 3830 Starr Centre Dr, Suite 2, Canfield, OH 44406

www.PLATZREALTYGROUP.com