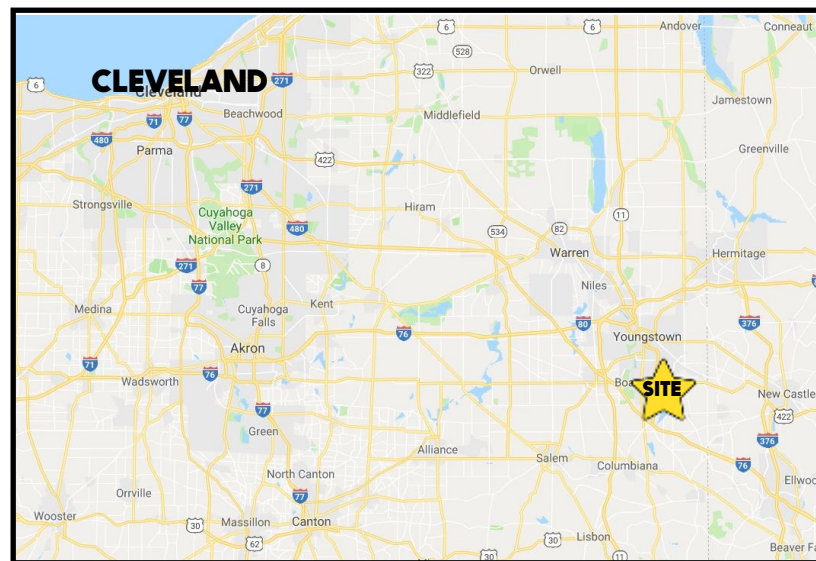


LOCATION

Western Reserve Rd/Hickory Hill Dr, Boardman Twp, OH 44514



HIGHLIGHTS

- Redevelopment opportunities
- Acreage on Western Reserve Rd / Hickory Hill
- Frontage and visibility from I-680
- Located at the Western Reserve Rd / I-680 ramp
- Professional setting with great regional access

CONTACT

BILL KUTLICK

330.565.5701

bkutlick@platzrealtygroup.com

Office: 330.757.4889 | Fax: 330.294.5622 | 3830 Starr Centre Dr, Suite 2, Canfield, OH 44406

www.PLATZREALTYGROUP.com

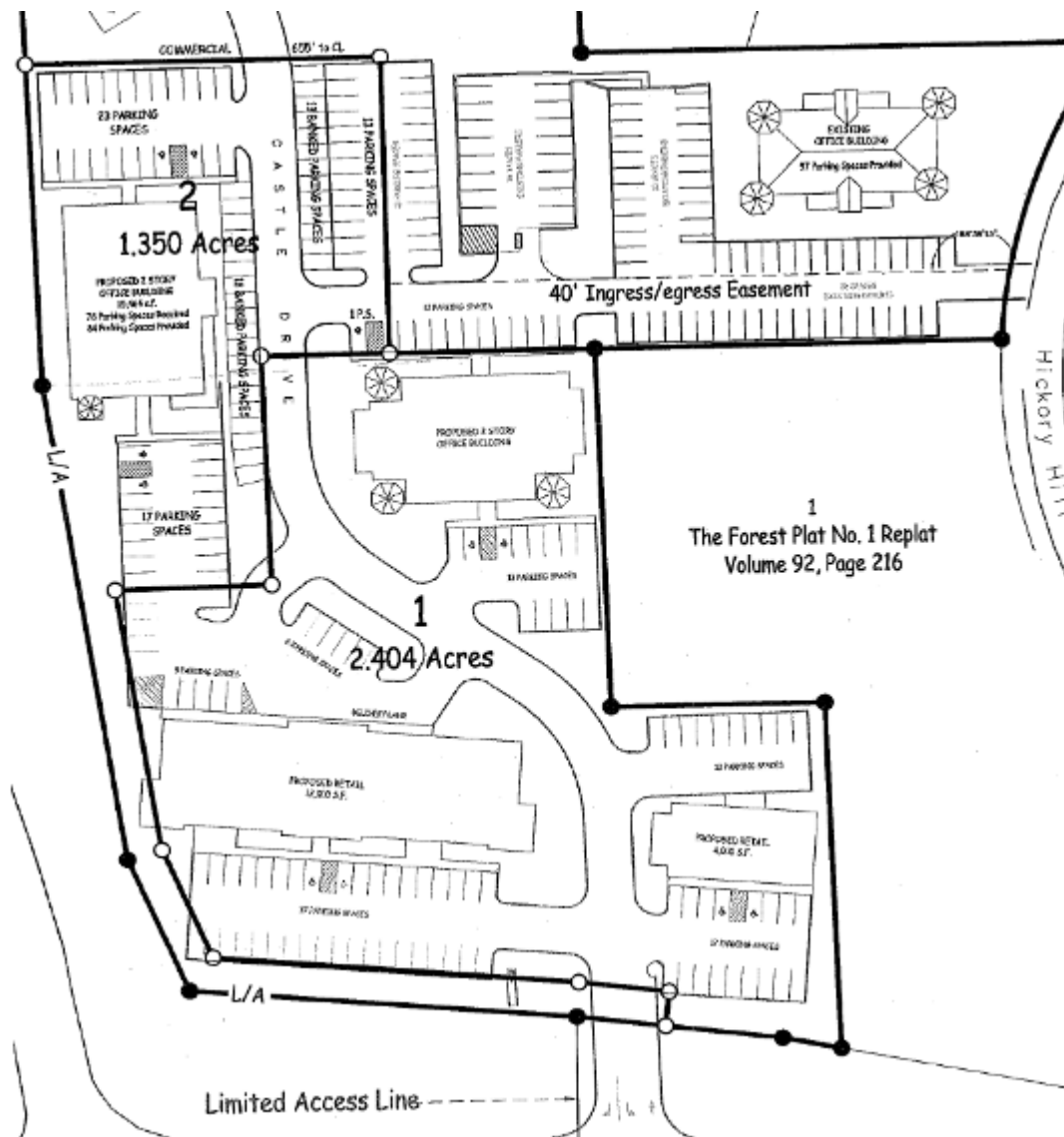


Office: 330.757.4889 | Fax: 330.294.5622 | 3830 Starr Centre Dr, Suite 2, Canfield, OH 44406

www.PLATZREALTYGROUP.com

The information presented was obtained from sources believed to be true and reliable. The Platz Realty Group makes no warranties or guarantees to the accuracy of the information.

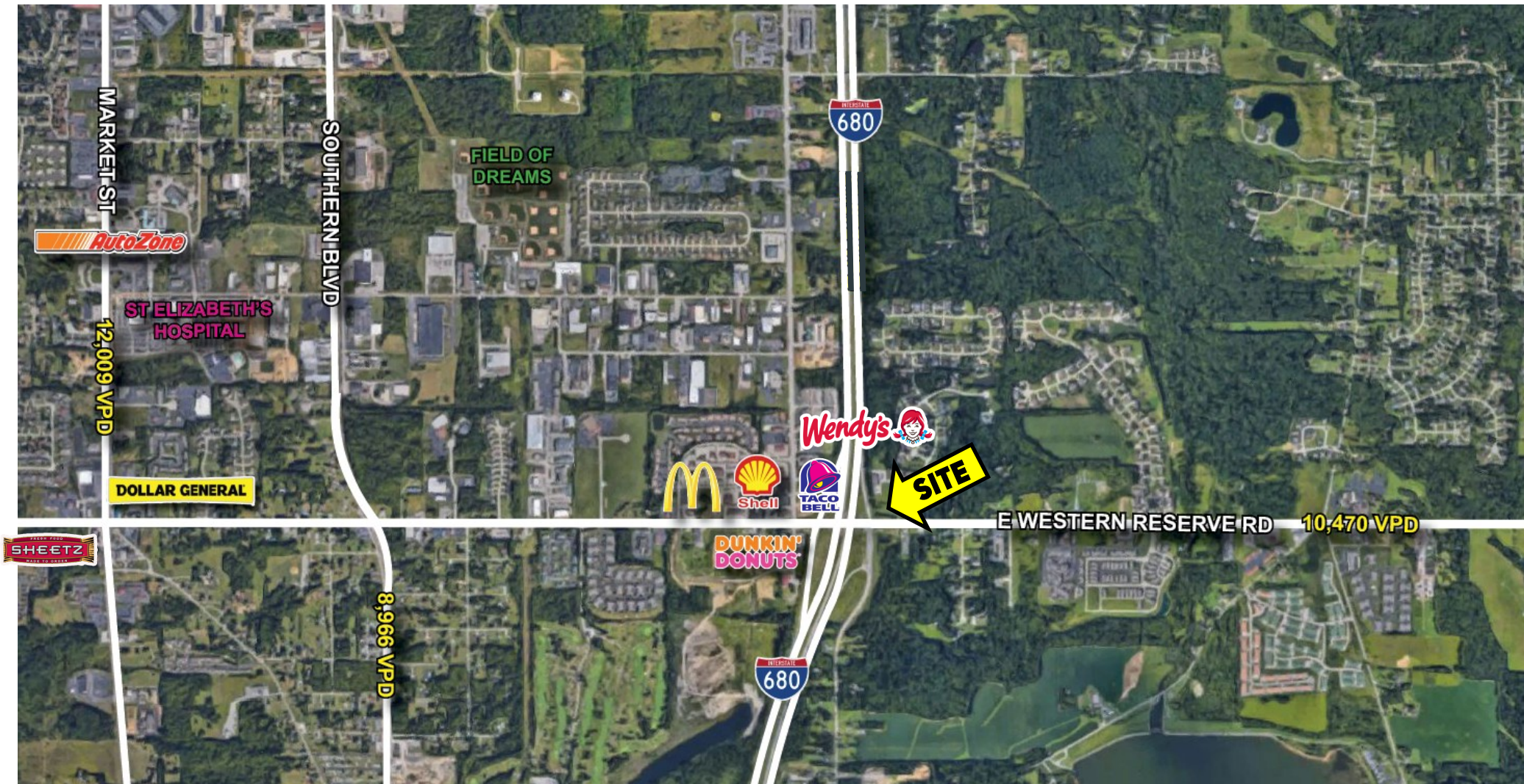
PROPOSED SITE PLAN



Office: 330.757.4889 | Fax: 330.294.5622 | 3830 Starr Centre Dr, Suite 2, Canfield, OH 44406

www.PLATZREALTYGROUP.com

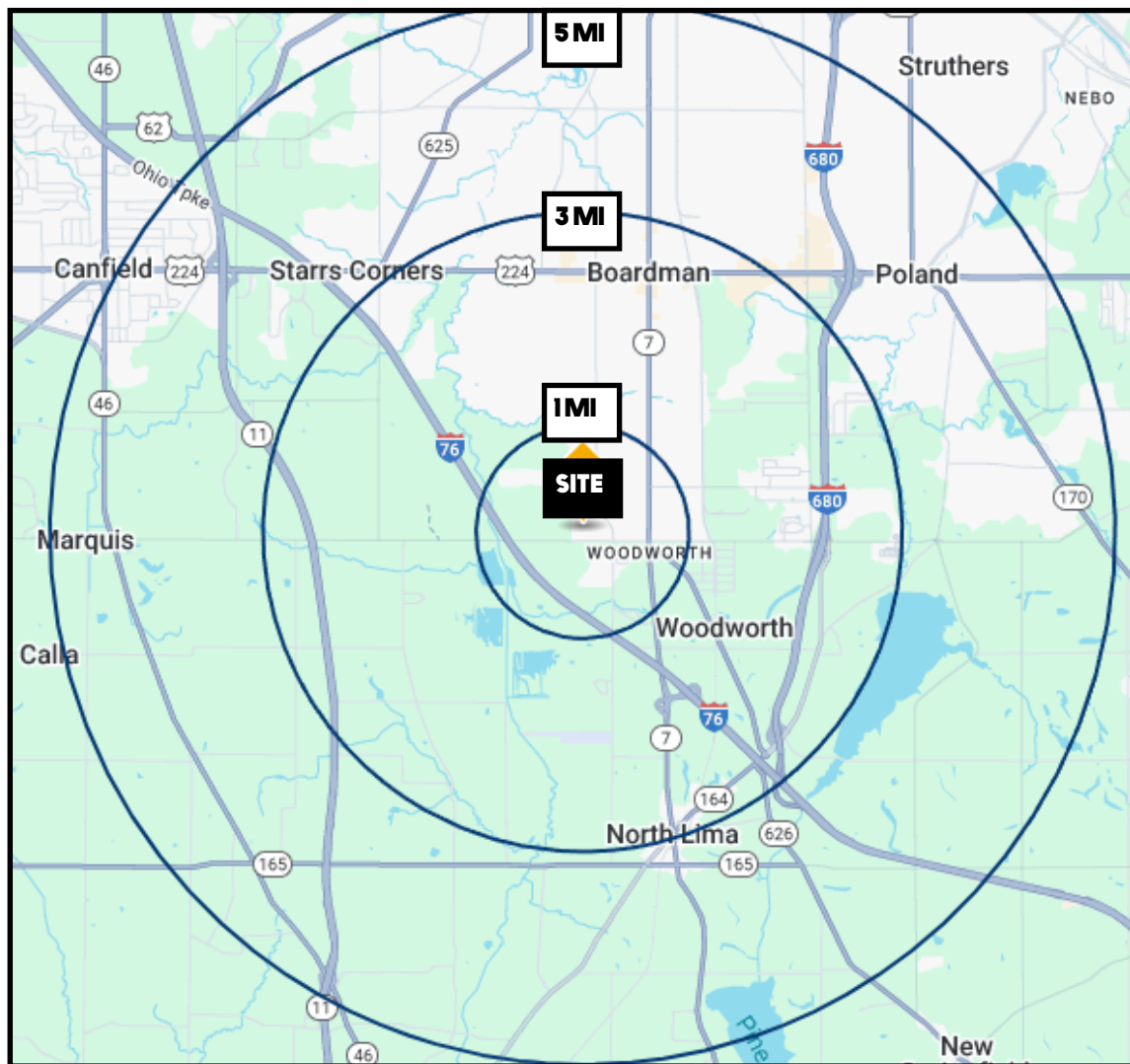
The information presented was obtained from sources believed to be true and reliable. The Platz Realty Group makes no warranties or guarantees to the accuracy of the information.



Office: 330.757.4889 | Fax: 330.294.5622 | 3768 Boardman Canfield Rd, Canfield, OH 44406

www.PLATZREALTYGROUP.com

The information presented was obtained from sources believed to be true and reliable. The Platz Realty Group makes no warranties or guarantees to the accuracy of the information.



DEMOGRAPHICS	1 MI	3 MI	5 MI
POPULATION	2,138	22,260	69,115
HOUSEHOLDS	1,000	9,668	30,326
MEDIAN AGE	55	50	46
AVERAGE HH INCOME	\$91,062	\$92,153	\$79,367

SITE INFORMATION	
LOCATION	Boardman Township Mahoning County Boardman School District
PARCELS	29-049-0-023.01-0 29-049-0-023.03-0
PROPERTY TYPE	Land
ZONING	GB (Western Reserve) R-1A (Rear)
SIZE	2.4 acres + 7.7 acres
PRICE	Call for pricing

Office: 330.757.4889 | Fax: 330.294.5622 | 3830 Starr Centre Dr, Suite 2, Canfield, OH 44406

www.PLATZREALTYGROUP.com