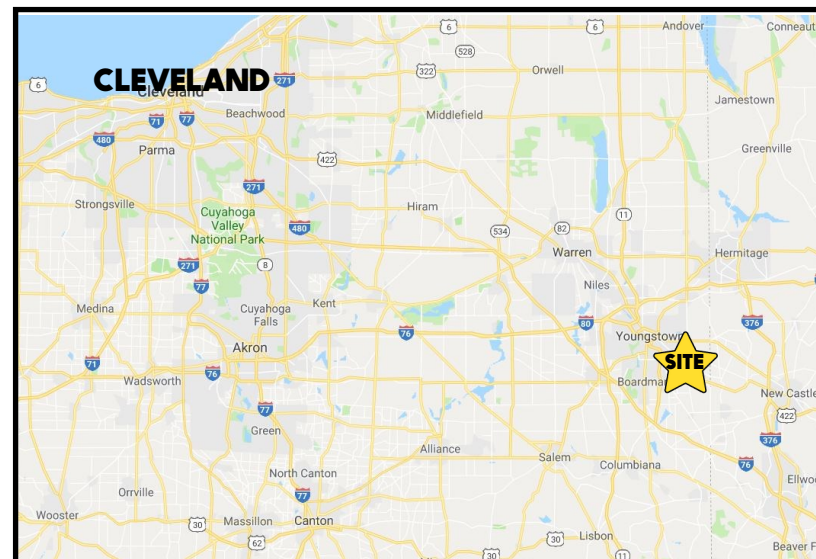


## LOCATION

230 E Liberty St, Lowellville, OH 44436



**3D TOUR** [Tour](#)

## HIGHLIGHTS

- Warehouse + garage in Lowellville, OH
- Adjacent Office + land also available
- 2 drive-in doors + 2 garage doors
- Well maintained property
- Close to PA, convenient for tri-county location

## CONTACT

**DON THOMAS**

501.269.3827

[dthomas@platzrealtygroup.com](mailto:dthomas@platzrealtygroup.com)

Office: 330.757.4889 | Fax: 330.294.5622 | 3830 Starr Centre Dr, Suite 2, Canfield, OH 44406

**[www.PLATZREALTYGROUP.com](http://www.PLATZREALTYGROUP.com)**



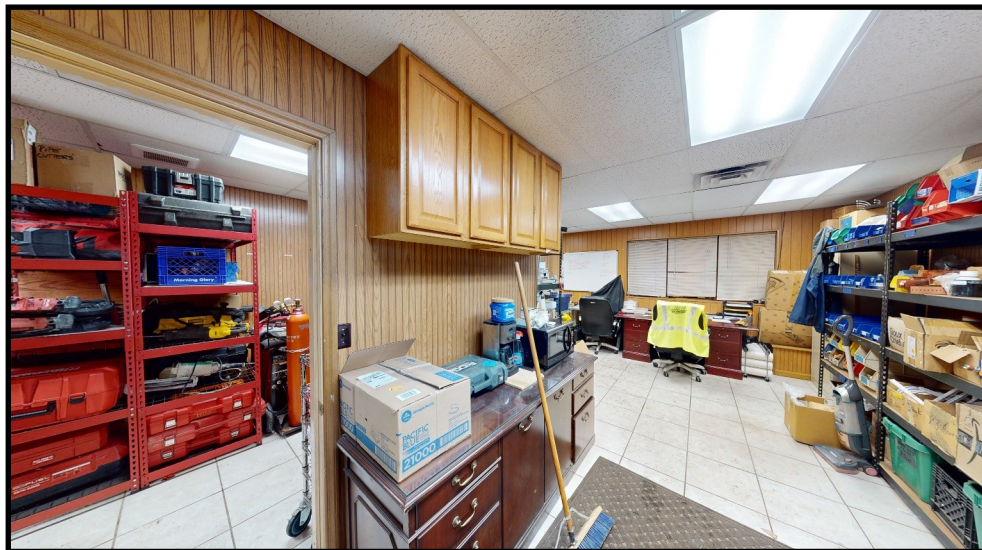


Office: 330.757.4889 | Fax: 330.294.5622 | 3830 Starr Centre Dr, Suite 2, Canfield, OH 44406

**www.PLATZREALTYGROUP.com**

The information presented was obtained from sources believed to be true and reliable. The Platz Realty Group makes no warranties or guarantees to the accuracy of the information.



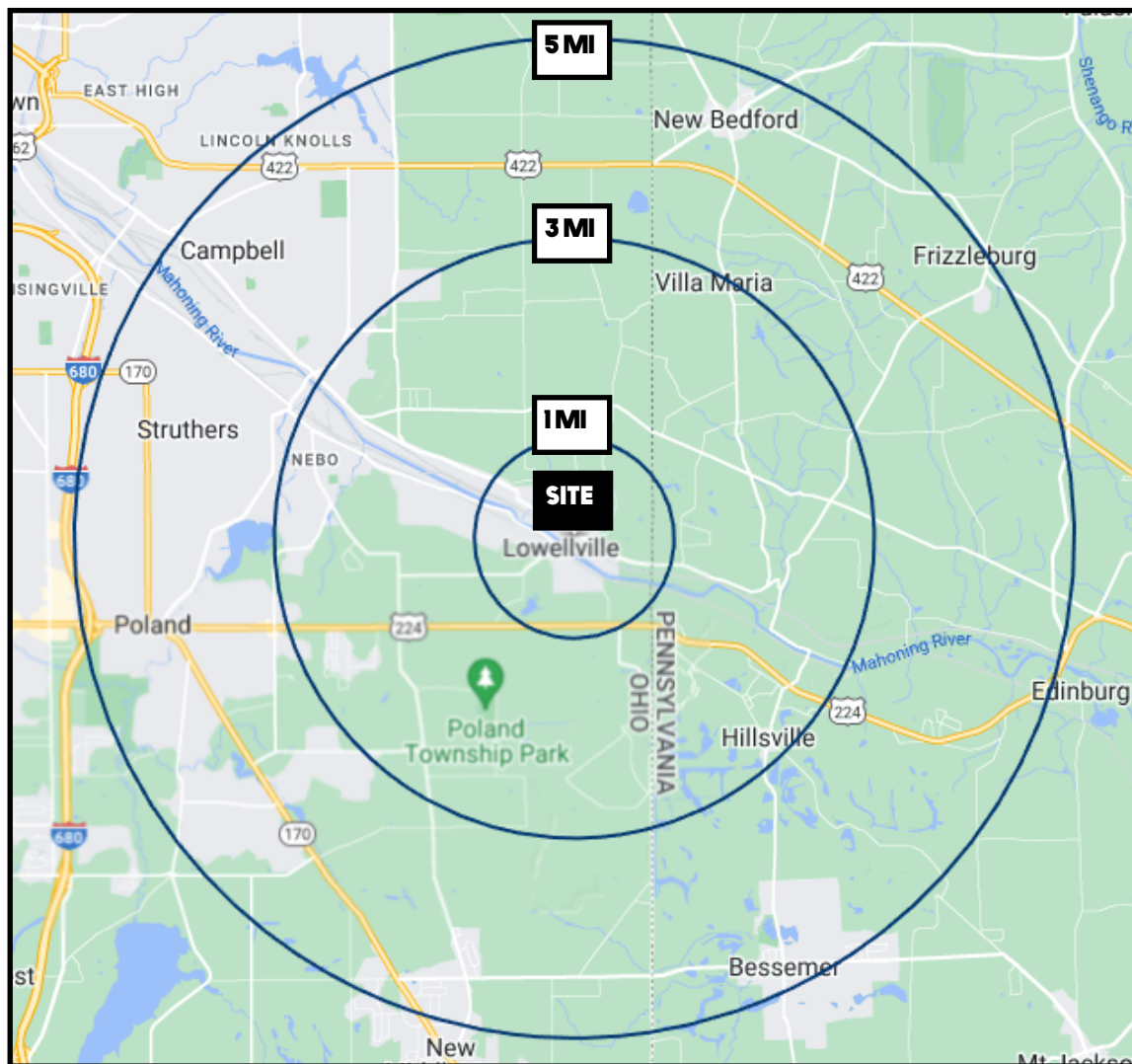


Office: 330.757.4889 | Fax: 330.294.5622 | 3830 Starr Centre Dr, Suite 2, Canfield, OH 44406

**[www.PLATZREALTYGROUP.com](http://www.PLATZREALTYGROUP.com)**

The information presented was obtained from sources believed to be true and reliable. The Platz Realty Group makes no warranties or guarantees to the accuracy of the information.





DEMOGRAPHICS	1 MI	3 MI	5 MI
<b>POPULATION</b>	1,281	6,545	45,157
<b>HOUSEHOLDS</b>	591	2,840	19,212
<b>MEDIAN AGE</b>	47	48.1	45
<b>AVERAGE HH INCOME</b>	\$67,092	\$79,620	\$73,125

SITE INFORMATION	
<b>LOCATION</b>	Lowellville Village Mahoning County
<b>PARCELS</b>	40-009-0-135, 136, 137, 138, 139, 140
<b>PROPERTY TYPE</b>	Warehouse
<b>ACREAGE</b>	.38 Acres
<b>REAL ESTATE TAXES</b>	\$1,743/year
<b>SIZE</b>	Warehouse: 1,500 SF (30' x 50') Garage: 720 SF +/-
<b>PRICE</b>	\$285,000

Office: 330.757.4889 | Fax: 330.294.5622 | 3830 Starr Centre Dr, Suite 2, Canfield, OH 44406

**www.PLATZREALTYGROUP.com**