

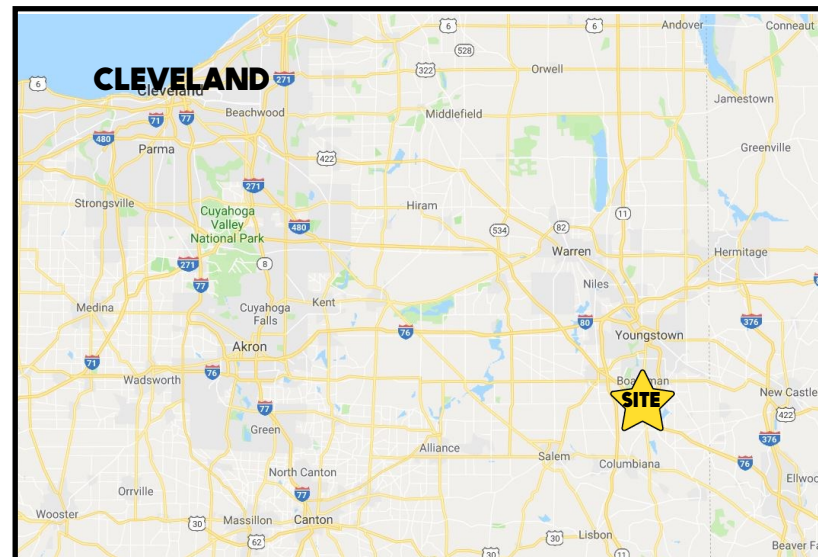
LOCATION

8179 South Ave, Boardman, OH 44512



HIGHLIGHTS

- 2.3 acres on South Ave, just south of Walker Mill Rd
- Easy access to I-680
- High exposure commercial land
- 200' frontage
- Zoned GB



TRAFFIC

South Ave = 13,542 VPD

CONTACT

MATT WILSON

330.347.9677

mwilson@platzrealtygroup.com

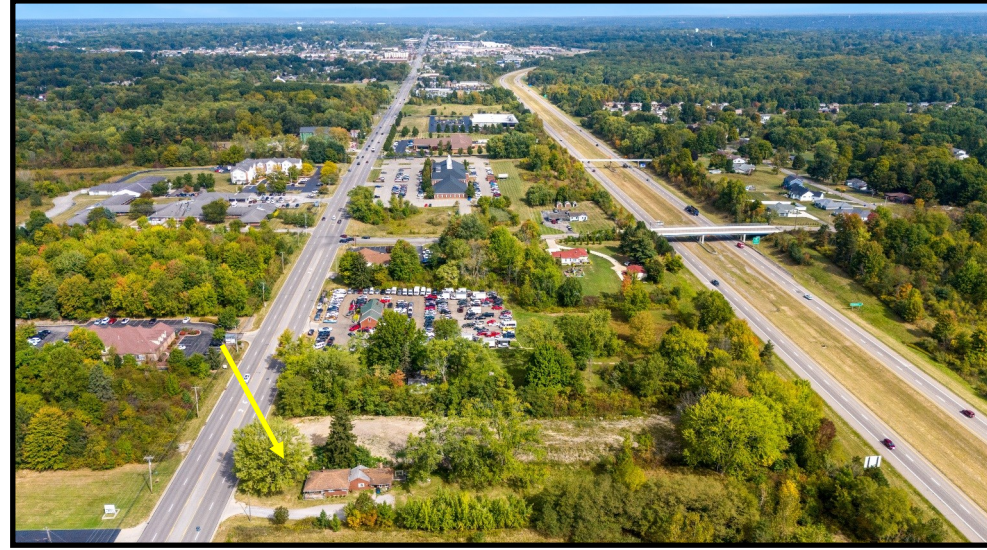
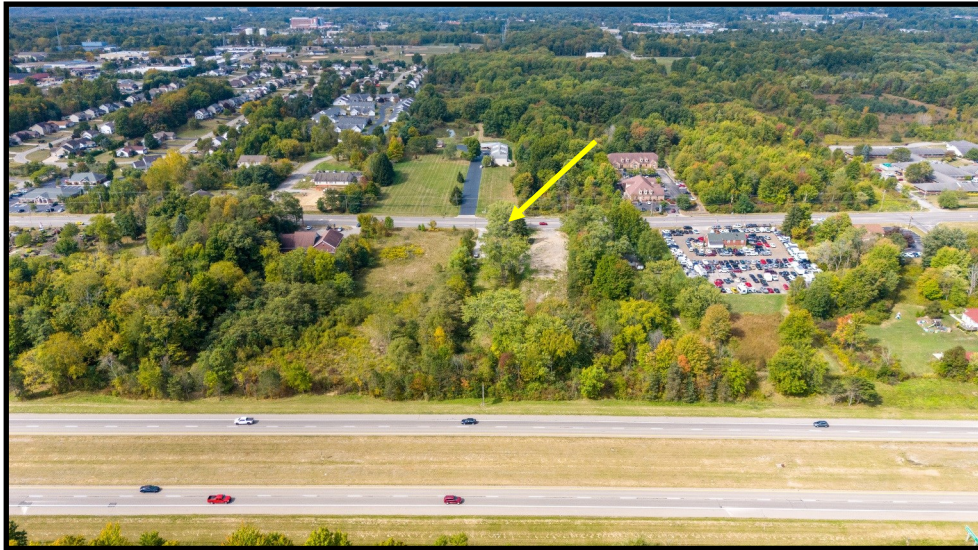
ADAM DIVELBISS

501.551.3817

adivelbiss@platzrealtygroup.com

Office: 330.757.4889 | Fax: 330.294.5622 | 3830 Starr Centre Dr, Suite 2, Canfield, OH 44406

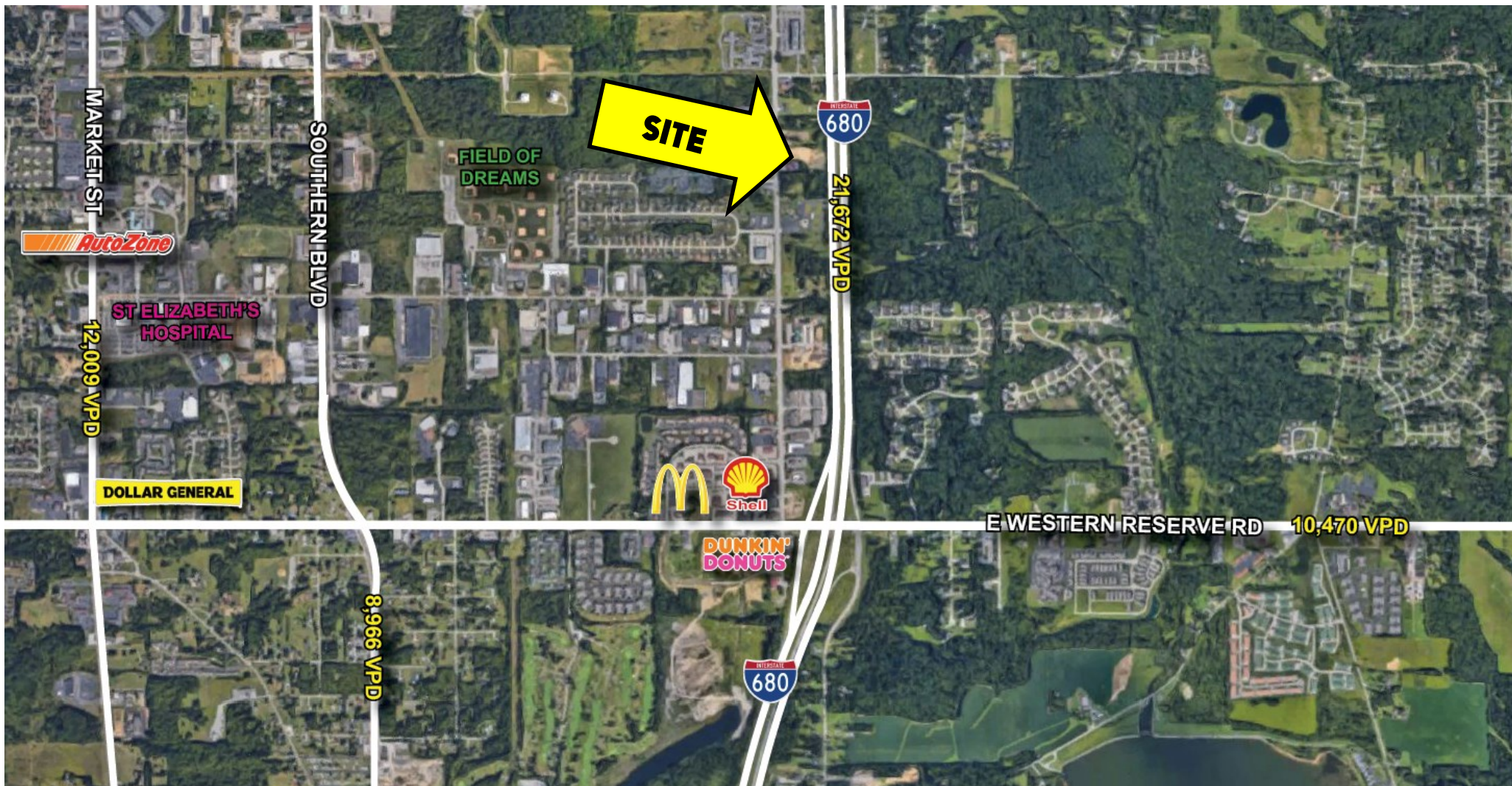
www.PLATZREALTYGROUP.com



Office: 330.757.4889 | Fax: 330.294.5622 | 3830 Starr Centre Dr, Suite 2, Canfield, OH 44406

www.PLATZREALTYGROUP.com

The information presented was obtained from sources believed to be true and reliable. The Platz Realty Group makes no warranties or guarantees to the accuracy of the information.

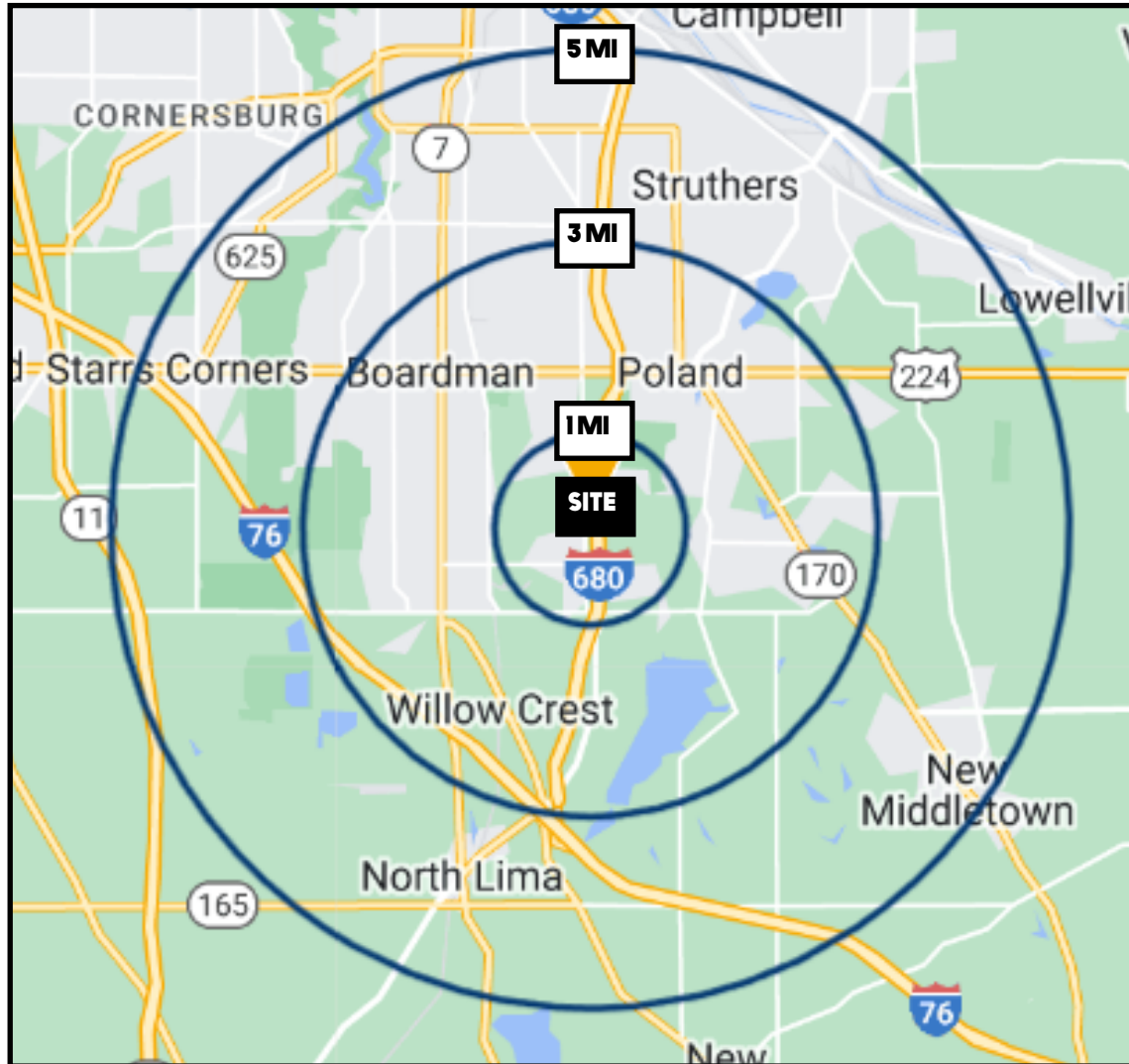


Office: 330.757.4889 | Fax: 330.294.5622 | 3830 Starr Centre Dr, Suite 2, Canfield, OH 44406

www.PLATZREALTYGROUP.com

The information presented was obtained from sources believed to be true and reliable. The Platz Realty Group makes no warranties or guarantees to the accuracy of the information.

SITE INFORMATION



DEMOGRAPHICS	1 MI	3 MI	5 MI
POPULATION	2,028	32,994	84,185
HOUSEHOLDS	902	14,521	36,678
MEDIAN AGE	56	48	45
AVERAGE HH INCOME	\$109,436	\$85,577	\$75,355

SITE INFORMATION	
LOCATION	Boardman Township Mahoning County
PARCEL	29-051-0-081 + 080
PROPERTY TYPE	Commercial Land
ZONING	GB
FRONTAGE	200'
SIZE	2.3 Acres
REAL ESTATE TAXES	\$4,840/year
PRICE	\$285,000

Office: 330.757.4889 | Fax: 330.294.5622 | 3830 Starr Centre Dr, Suite 2, Canfield, OH 44406

www.PLATZREALTYGROUP.com