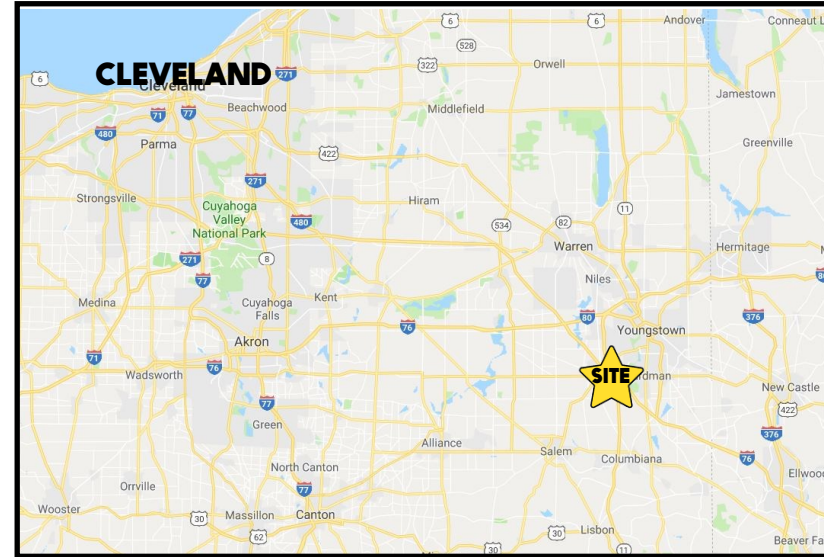


LOCATION

1305 Boardman Canfield Rd, Boardman, OH 44512



HIGHLIGHTS

- Ideal location across from new Meijer, behind Giangelo's
- Off US 224 by Tippecanoe Rd
- Front door parking
- Professional office units

TRAFFIC

Boardman Canfield Rd = 33,649 VPD

CONTACT

BILL KUTLICK

330.565.5701

bkutlick@platzrealtygroup.com

Office: 330.757.4889 | Fax: 330.294.5622 | 3830 Starr Centre Dr, Suite 2, Canfield, OH 44406

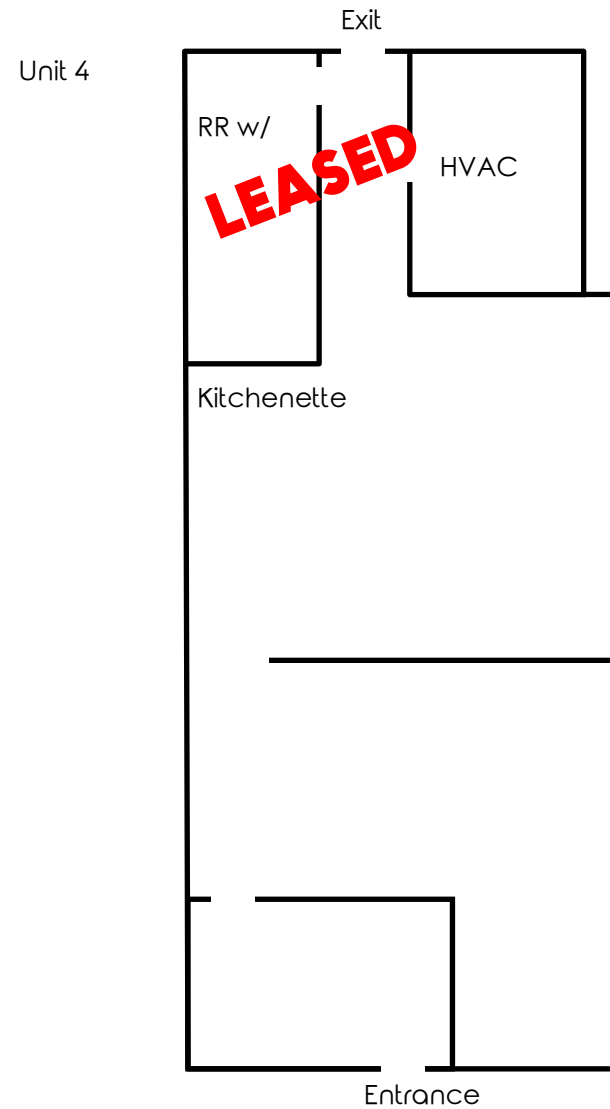
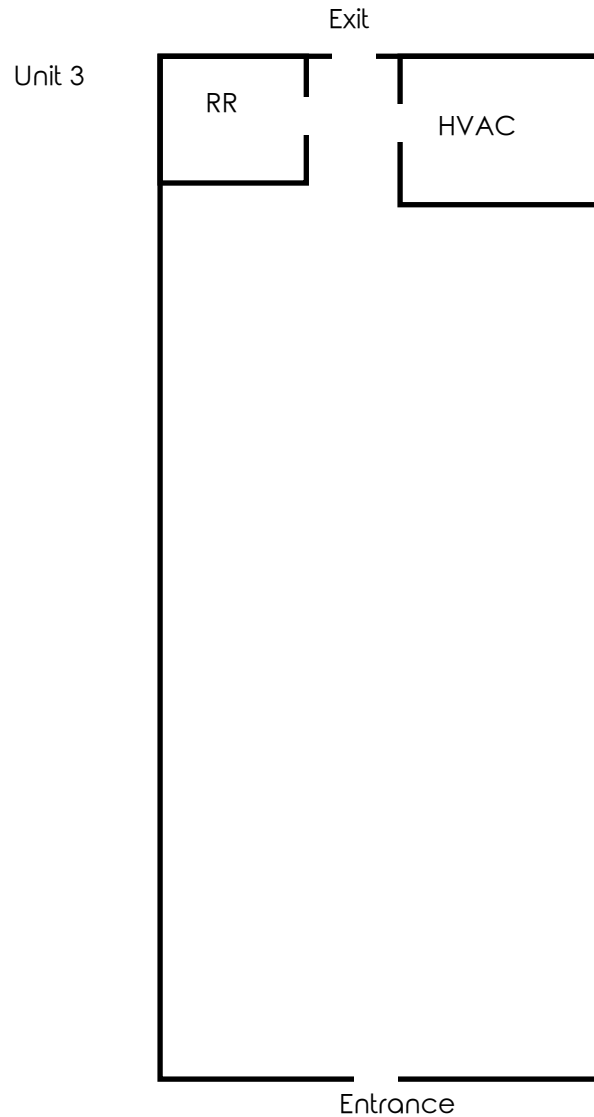
www.PLATZREALTYGROUP.com



Office: 330.757.4889 | Fax: 330.294.5622 | 3830 Starr Centre Dr, Suite 2, Canfield, OH 44406

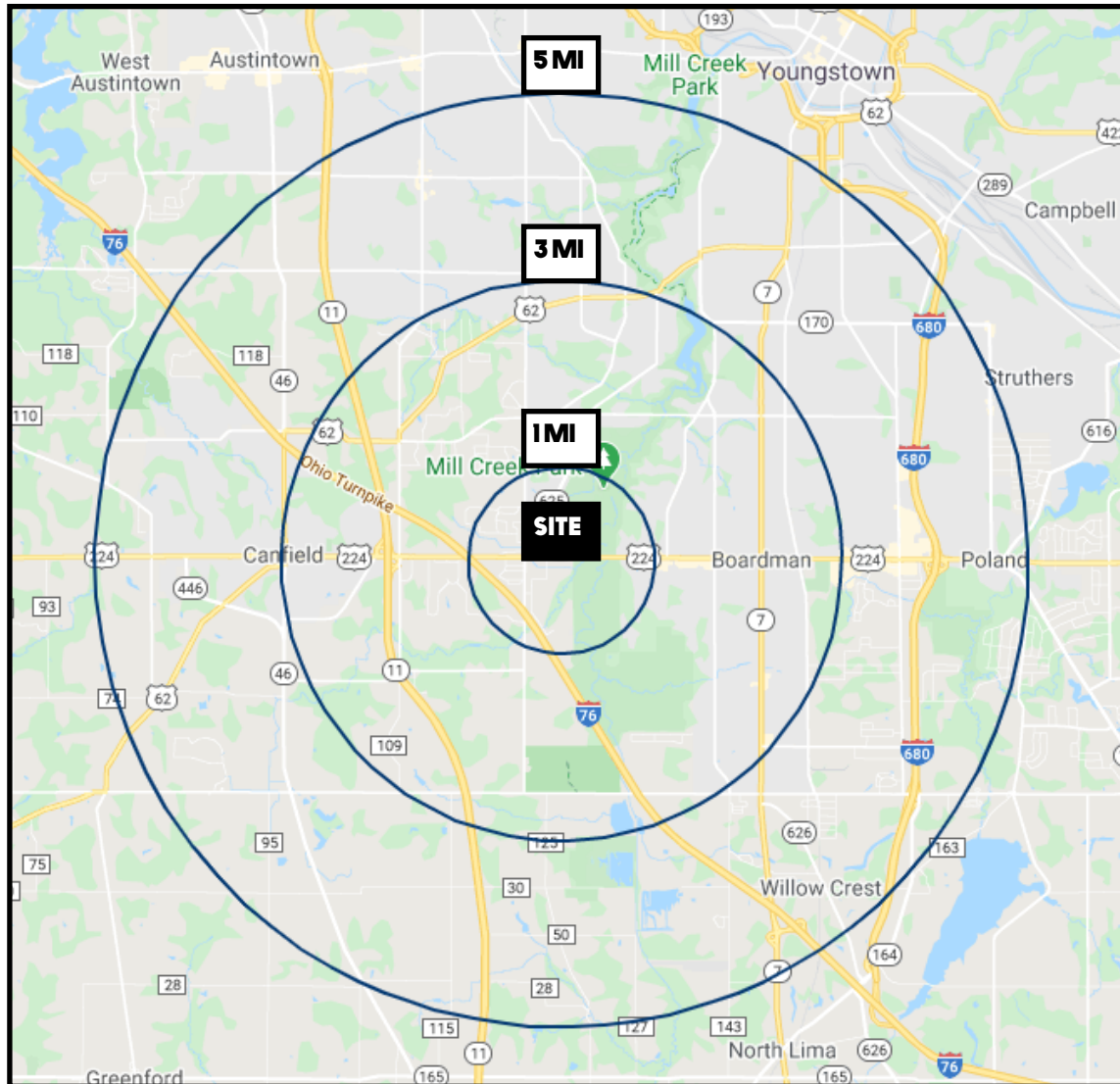
www.PLATZREALTYGROUP.com

The information presented was obtained from sources believed to be true and reliable. The Platz Realty Group makes no warranties or guarantees to the accuracy of the information.



Office: 330.757.4889 | Fax: 330.294.5622 | 3830 Starr Centre Dr, Suite 2, Canfield, OH 44406

www.PLATZREALTYGROUP.com



DEMOGRAPHICS	1 MI	3 MI	5 MI
POPULATION	5,681	38,405	103,751
HOUSEHOLDS	2,497	16,794	44,393
AVERAGE AGE	43	43	43
MEDIAN HH INCOME	\$75,574	\$64,828	\$53,673

SITE INFORMATION

LOCATION	Boardman Township Mahoning County
PROPERTY TYPE	Office
PARKING	Front door parking
AVAILABLE UNITS	Unit 3: 950 SF
SIGNAGE	Building
UTILITIES	Separately metered
RENT	Unit 3: \$900-\$1,300 / month

Office: 330.757.4889 | Fax: 330.294.5622 | 3830 Starr Centre Dr, Suite 2, Canfield, OH 44406