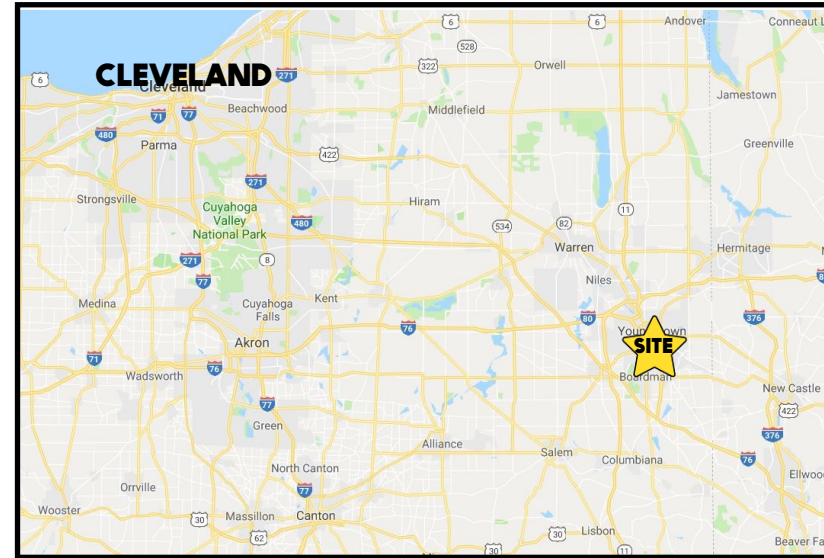


LOCATION

4389 Lake Park Rd, Boardman, OH 44512



TRAFFIC

Lake Park Rd = 6,572 VPD

Midlothian Blvd = 17,999 VPD

HIGHLIGHTS

- Heated Commercial Garage w/9,000# 2 post lift
- 3) 8' drive-in doors + 1) 12' drive-in door
- Large blacktop parking lot
- Fenced area behind building
- Signage on Lake Park Rd

CONTACT

THERESA MORSE

330.518.6082

tmorse@platzrealtygroup.com

Office: 330.757.4889 | Fax: 330.294.5622 | 3830 Starr Centre Dr, Suite 2, Canfield, OH 44406

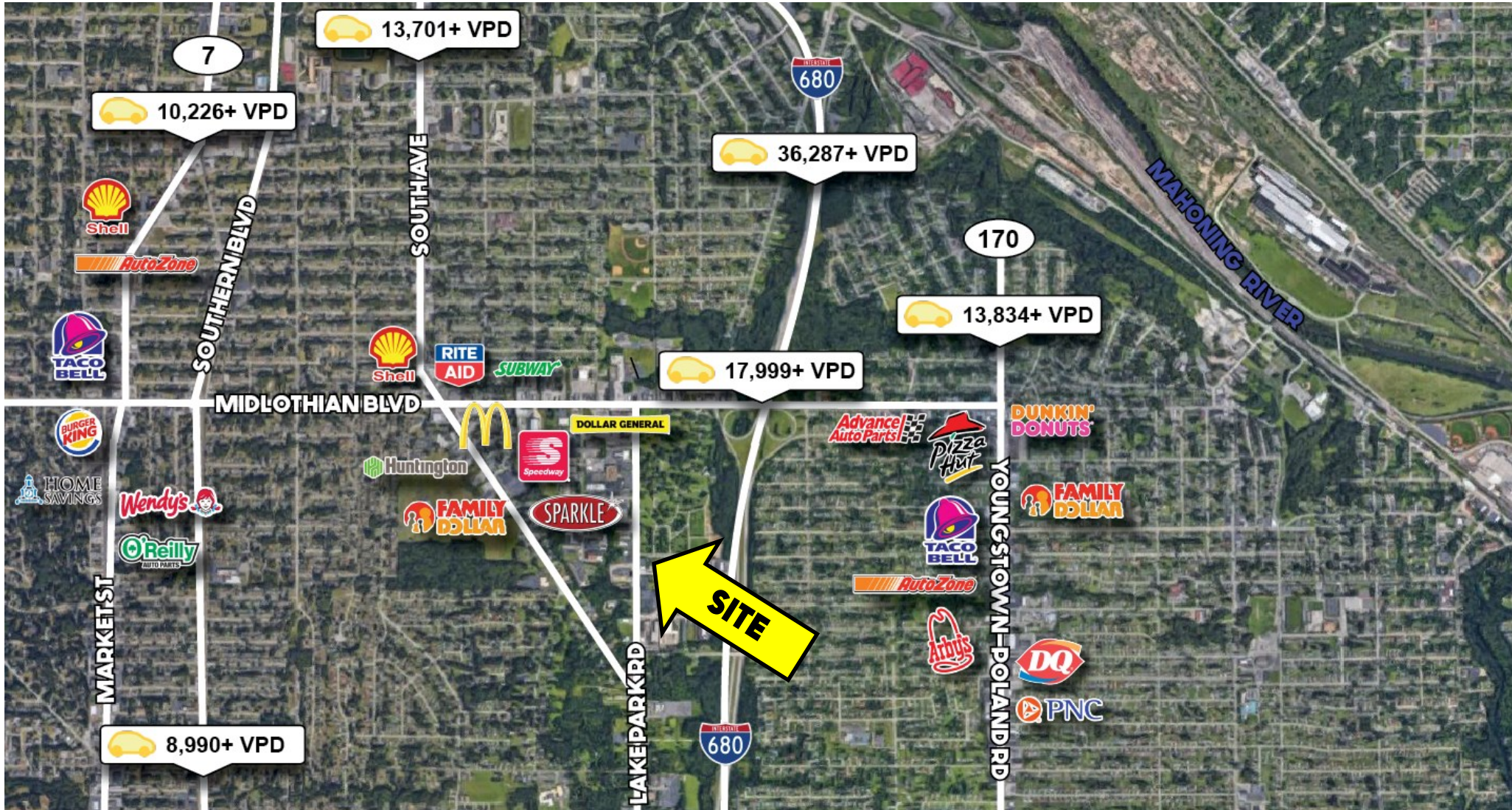
www.PLATZREALTYGROUP.com



Office: 330.757.4889 | Fax: 330.294.5622 | 3830 Starr Centre Dr, Suite 2, Canfield, OH 44406

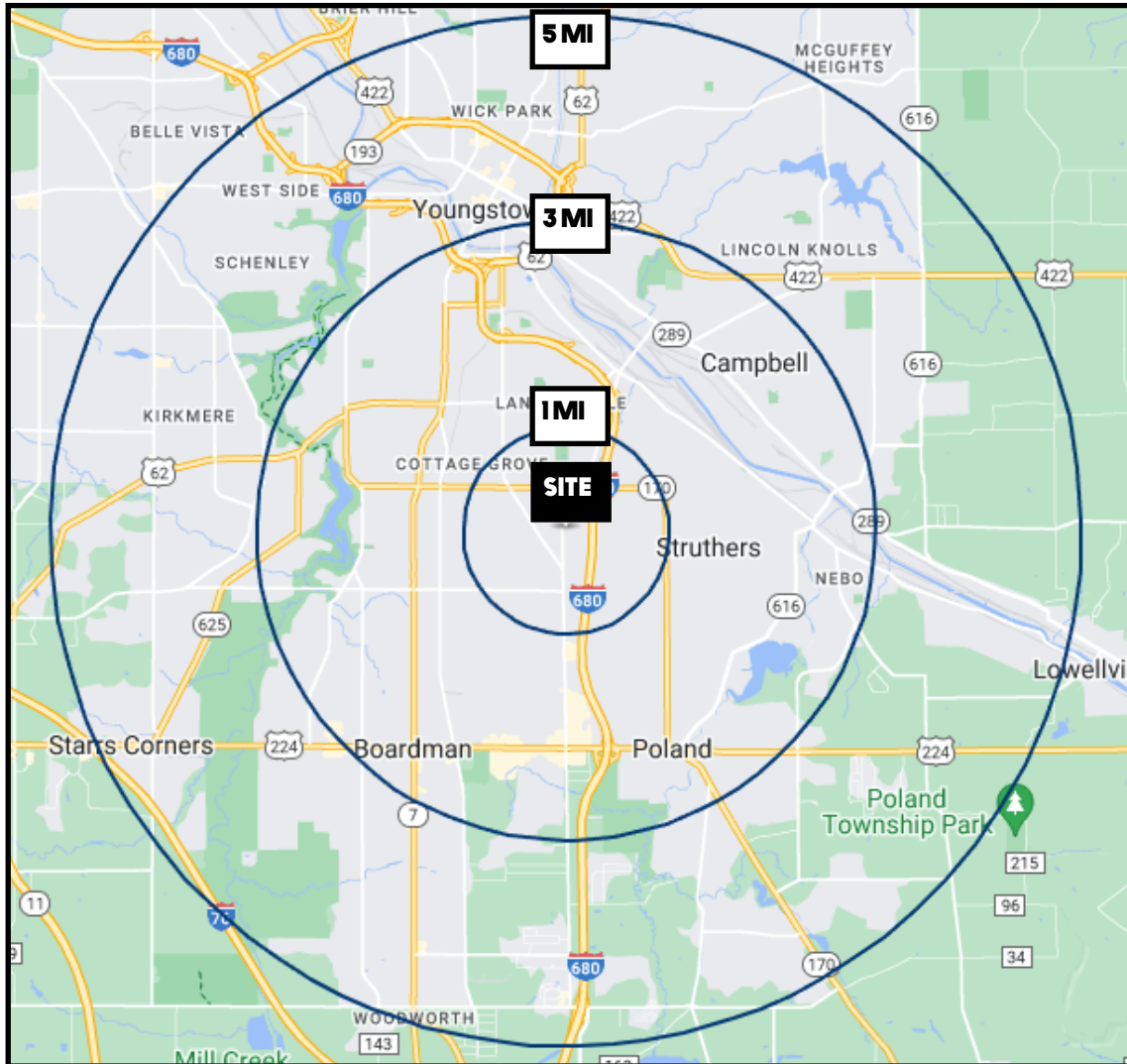
www.PLATZREALTYGROUP.com

The information presented was obtained from sources believed to be true and reliable. The Platz Realty Group makes no warranties or guarantees to the accuracy of the information.



Office: 330.757.4889 | Fax: 330.294.5622 | 3830 Starr Centre Dr, Suite 2, Canfield, OH 44406

www.PLATZREALTYGROUP.com



DEMOGRAPHICS	1 MI	3 MI	5 MI
POPULATION	8,231	67,725	134,012
HOUSEHOLDS	3,559	28,261	54,929
MEDIAN AGE	43	41	42
AVERAGE HH INCOME	\$48,997	\$55,467	\$61,064

SITE INFORMATION	
LOCATION	Boardman Township Mahoning County
PROPERTY TYPE	Garage
ZONING	Industrial
SIZE	1,400 SF
DRIVE-IN DOORS	3) 8' + 1) 12'
LOT	.5 acres
UTILITIES	All utilities are Tenant's responsibility
RENT	\$1,200/month (Gross)

Office: 330.757.4889 | Fax: 330.294.5622 | 3830 Starr Centre Dr, Suite 2, Canfield, OH 44406