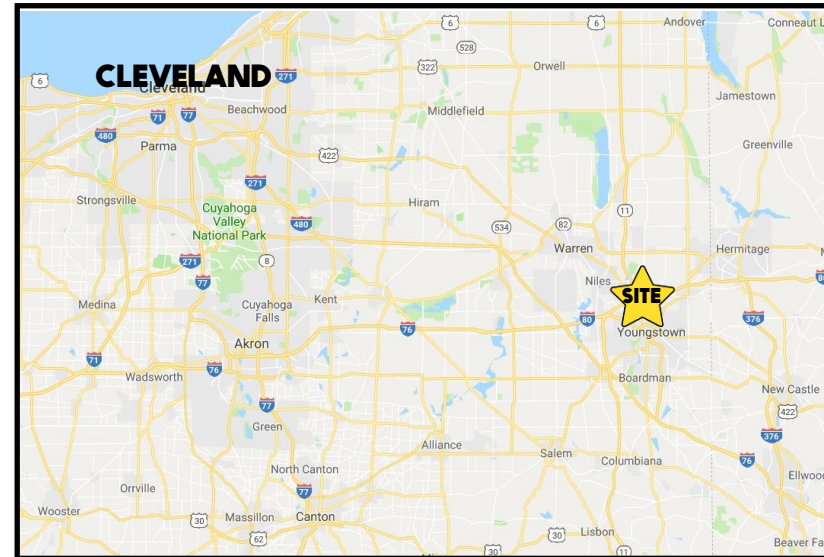


LOCATION

Gypsy Lane, Youngstown, OH 44510



HIGHLIGHTS

- 11.6 acres on Gypsy Lane
- Located in the Brier Hill neighborhood of Youngstown
- By the on/off ramps at I-680 / 711
- Potential development for flex space, near rail and highway access

TRAFFIC

711 = 21,477 VPD

CONTACT

DON THOMAS

330.269.3827

dthomas@platzrealtygroup.com

Office: 330.757.4889 | Fax: 330.294.5622 | 3830 Starr Centre Dr, Suite 2, Canfield, OH 44406

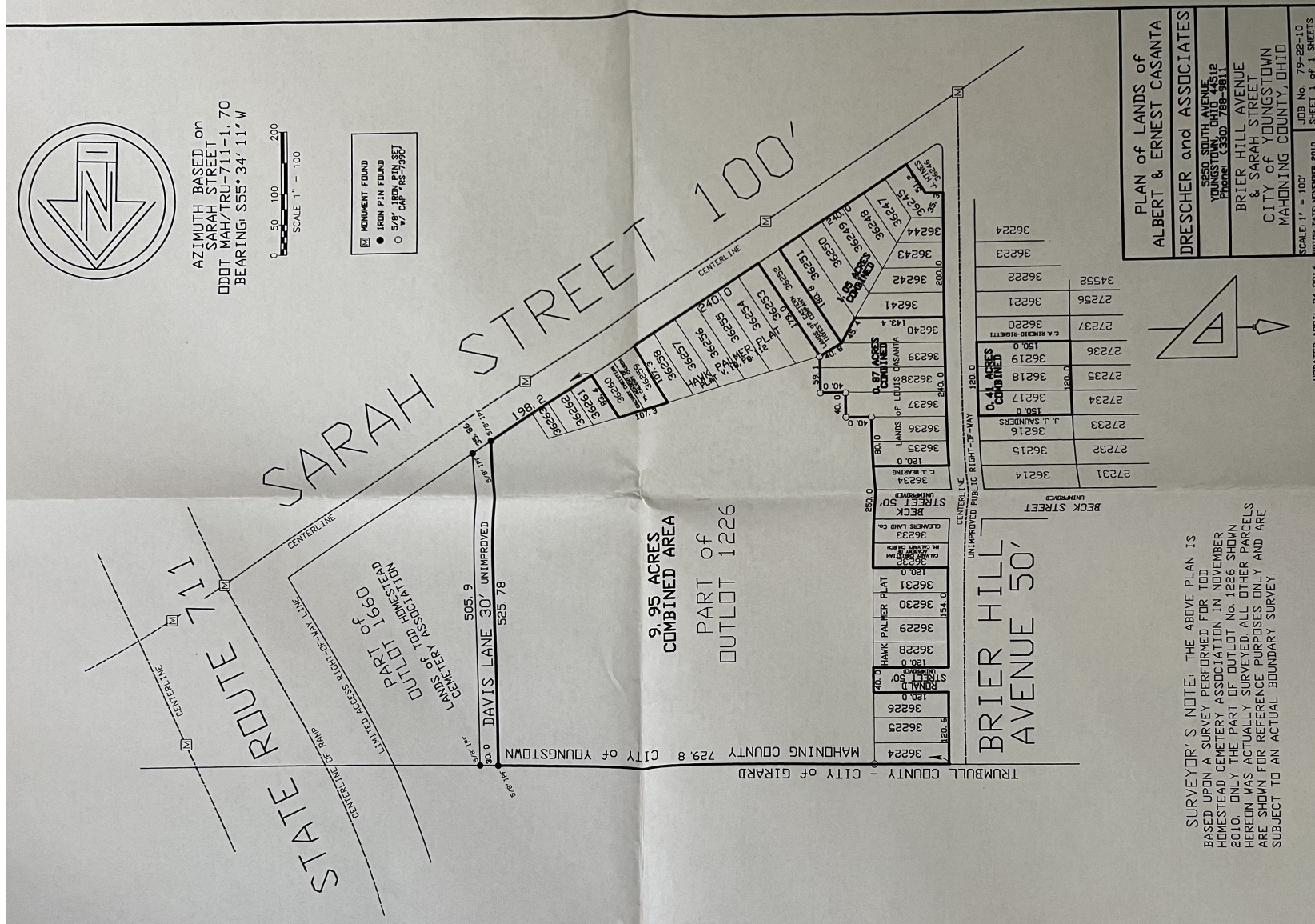
www.PLATZREALTYGROUP.com



Office: 330.757.4889 | Fax: 330.294.5622 | 3830 Starr Centre Dr, Suite 2, Canfield, OH 44406

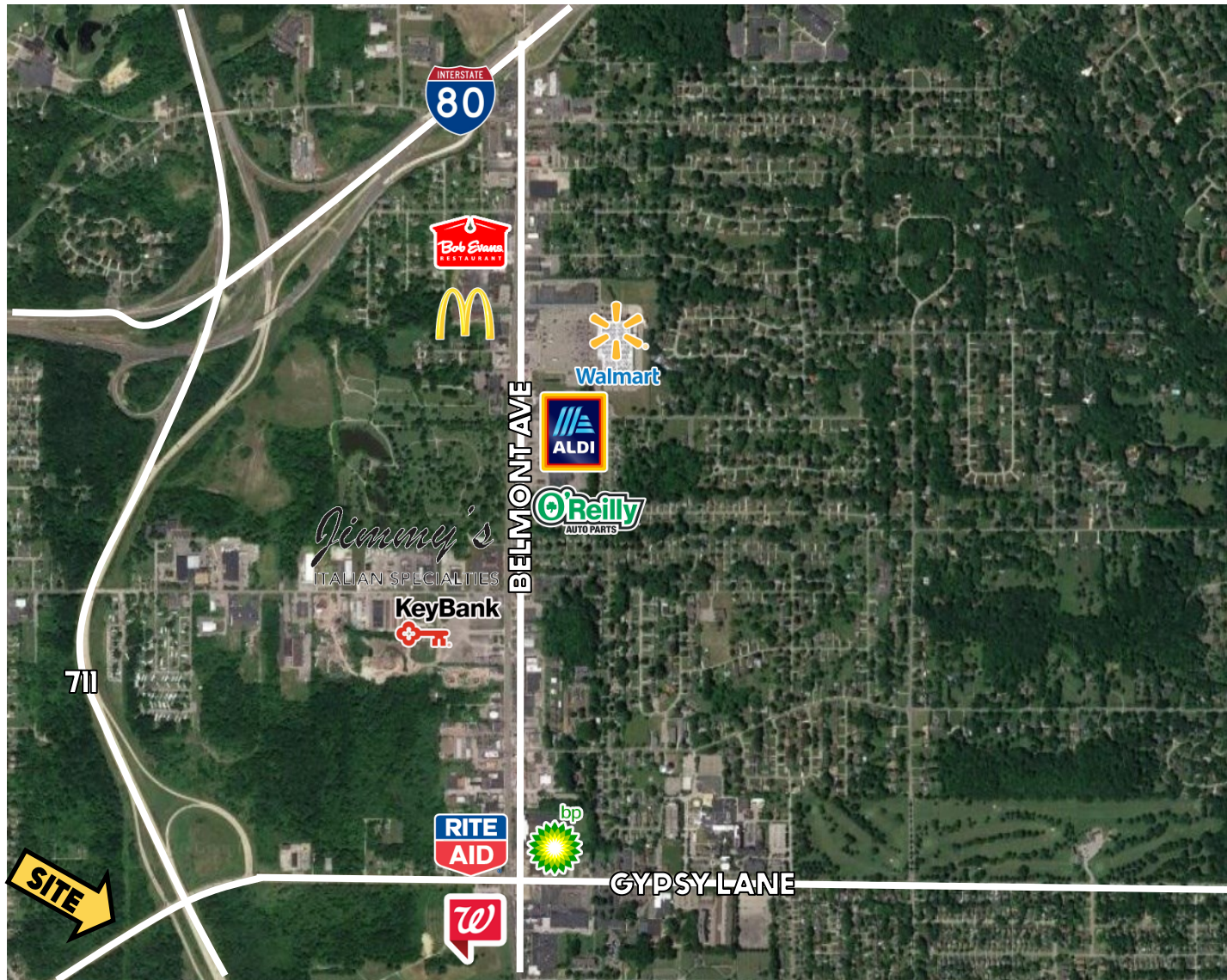
www.PLATZREALTYGROUP.com

The information presented was obtained from sources believed to be true and reliable. The Platz Realty Group makes no warranties or guarantees to the accuracy of the information.



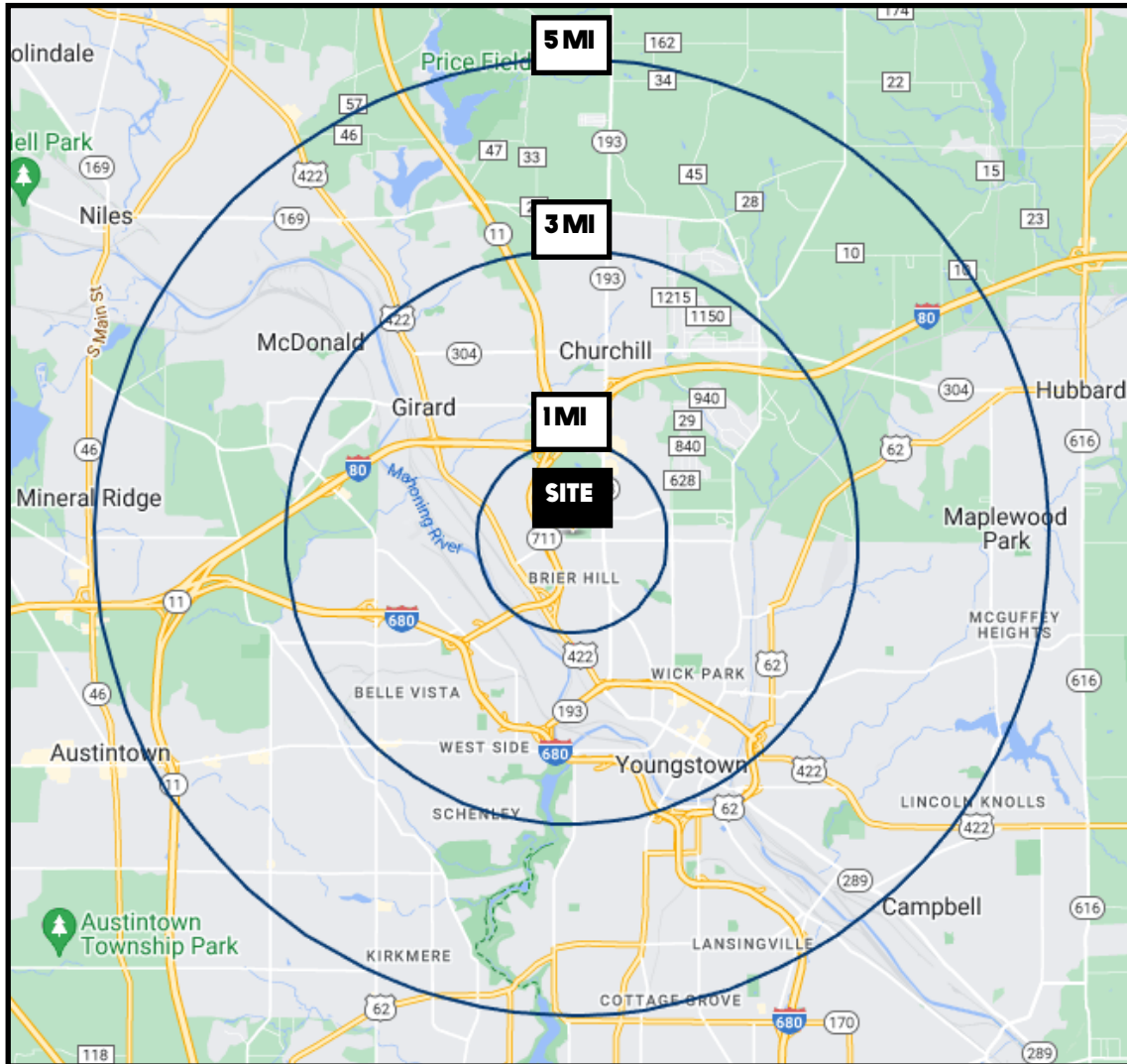
Office: 330.757.4889 | Fax: 330.294.5622 | 3830 Starr Centre Dr, Suite 2, Canfield, OH 44406

www.PLATZREALTYGROUP.com



Office: 330.757.4889 | Fax: 330.294.5622 | 3830 Starr Centre Dr, Suite 2, Canfield, OH 44406

www.PLATZREALTYGROUP.com



DEMOGRAPHICS	1 MI	3 MI	5 MI
POPULATION	4,887	43,201	107,326
HOUSEHOLDS	2,077	16,720	43,900
MEDIAN AGE	41	41	42
AVERAGE HH INCOME	\$51,716	\$50,634	\$52,452

SITE INFORMATION

LOCATION	Youngstown City Mahoning County
PARCELS	27 parcels - see list
PROPERTY TYPE	Land
ZONING	RT 5.5 - city will look at plan to rezone
UTILITIES	All available at the street
SIZE	11.6 acres
PRICE	\$7,500/acre = \$87,622

Office: 330.757.4889 | Fax: 330.294.5622 | 3830 Starr Centre Dr, Suite 2, Canfield, OH 44406