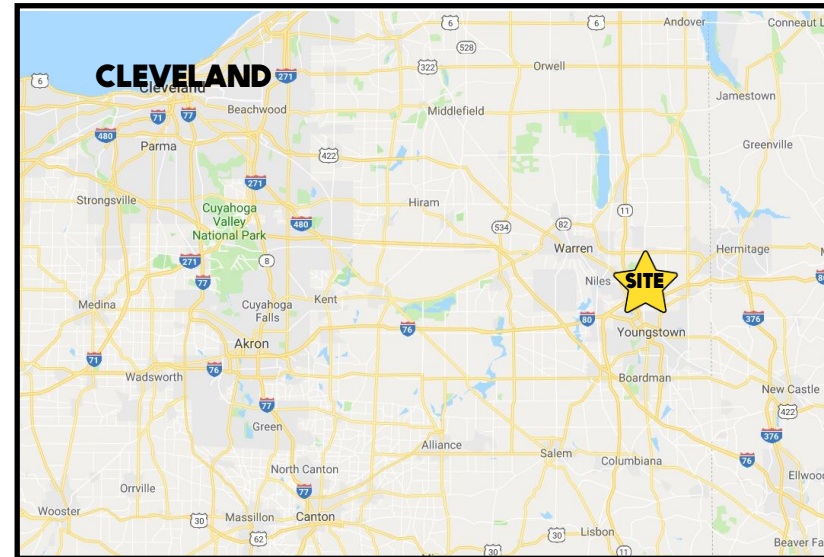


LOCATION

4531 Belmont Ave, Youngstown, OH 44505



HIGHLIGHTS

- Office / Retail plaza on Belmont Ave
- Located by the corner of Belmont Ave & Churchill Rd
- Liberty Township; Trumbull County
- Just north of I-80
- Building and pylon signage

TRAFFIC

Belmont Ave = 8,455 VPD
Churchill Rd = 12,284 VPD

CONTACT

GARY LASKO

330.509.4546 glasko@platzrealtygroup.com

THERESA MORSE

330.518.6082 tmorse@platzrealtygroup.com

Office: 330.757.4889 | Fax: 330.294.5622 | 3830 Starr Centre Dr, Suite 2, Canfield, OH 44406

www.PLATZREALTYGROUP.com



Office: 330.757.4889 | Fax: 330.294.5622 | 3830 Starr Centre Dr, Suite 2, Canfield, OH 44406

www.PLATZREALTYGROUP.com

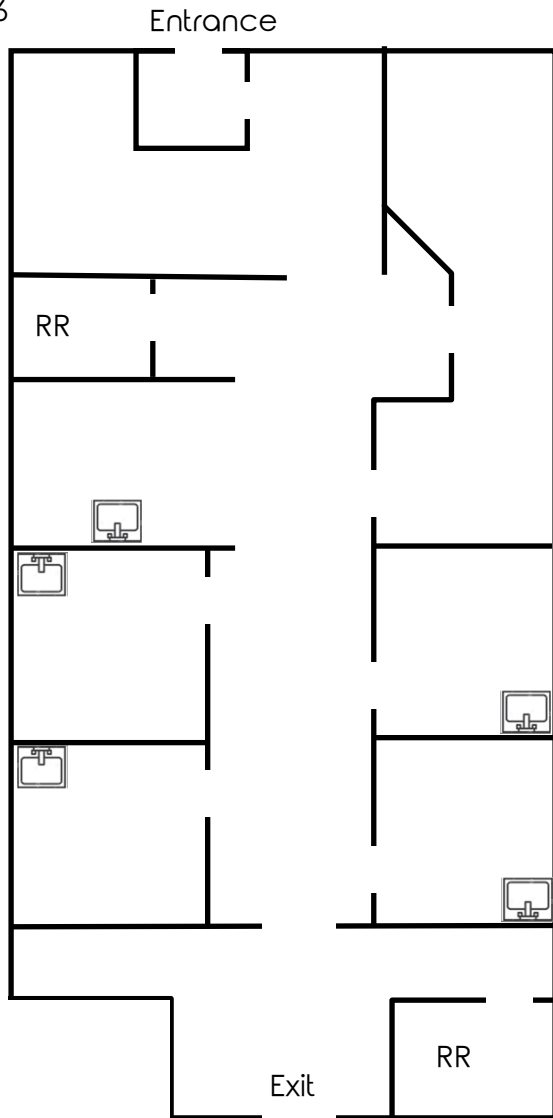


Office: 330.757.4889 | Fax: 330.294.5622 | 3830 Starr Centre Dr, Suite 2, Canfield, OH 44406

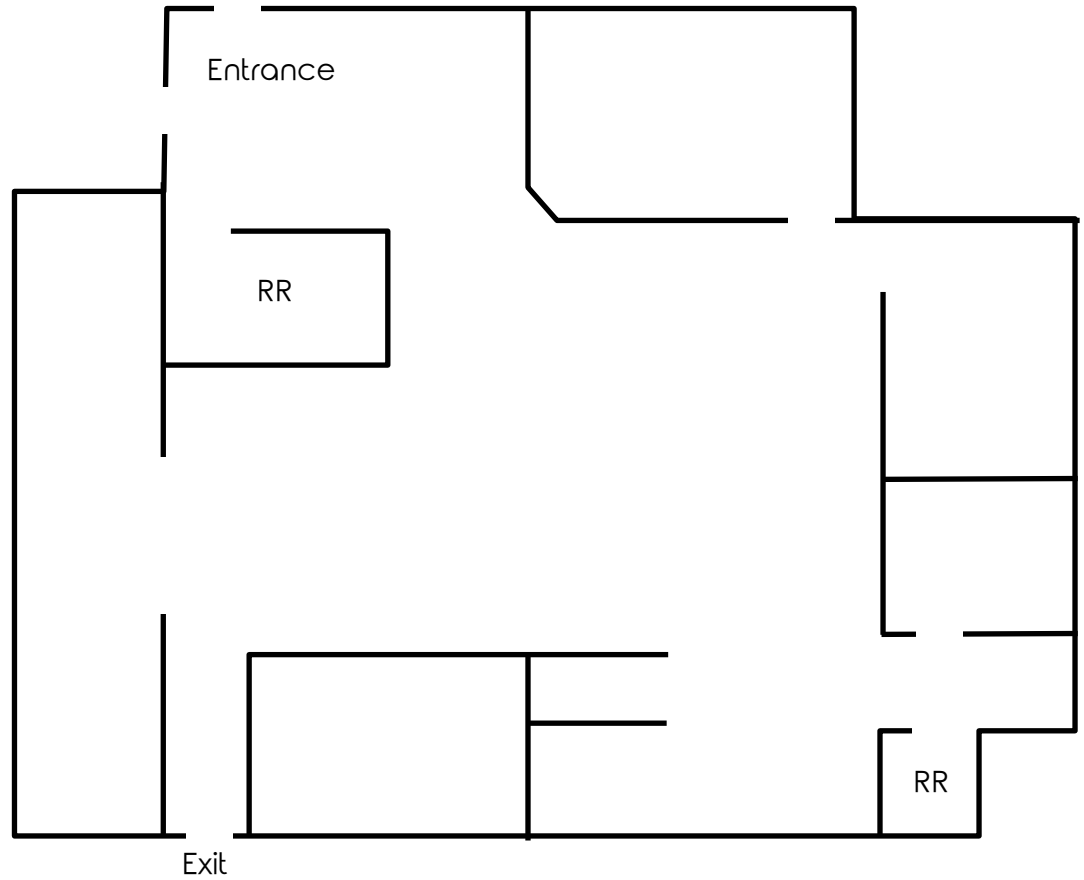
www.PLATZREALTYGROUP.com

The information presented was obtained from sources believed to be true and reliable. The Platz Realty Group makes no warranties or guarantees to the accuracy of the information.

Suite 6



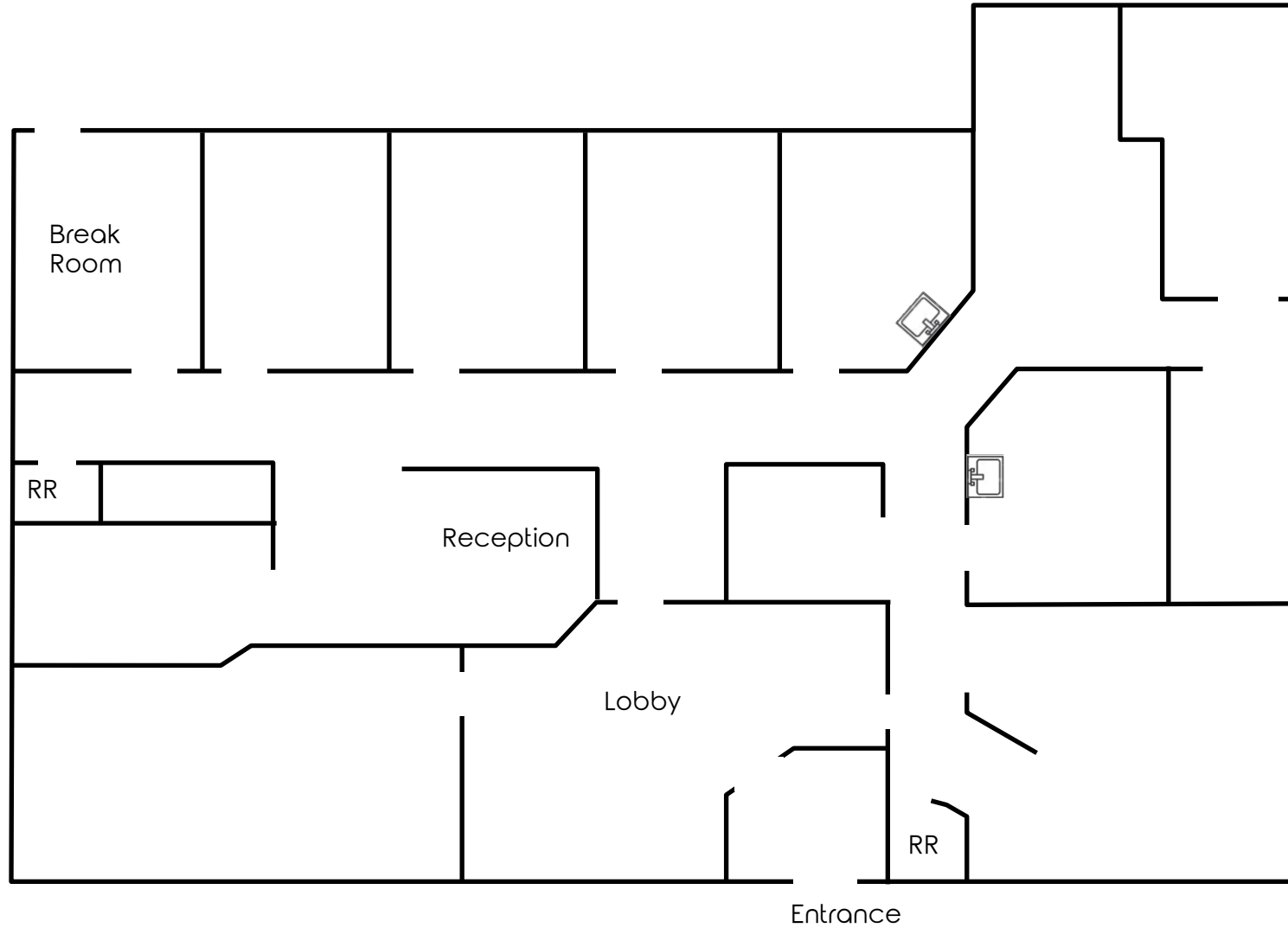
Suite 9



Office: 330.757.4889 | Fax: 330.294.5622 | 3830 Starr Centre Dr, Suite 2, Canfield, OH 44406

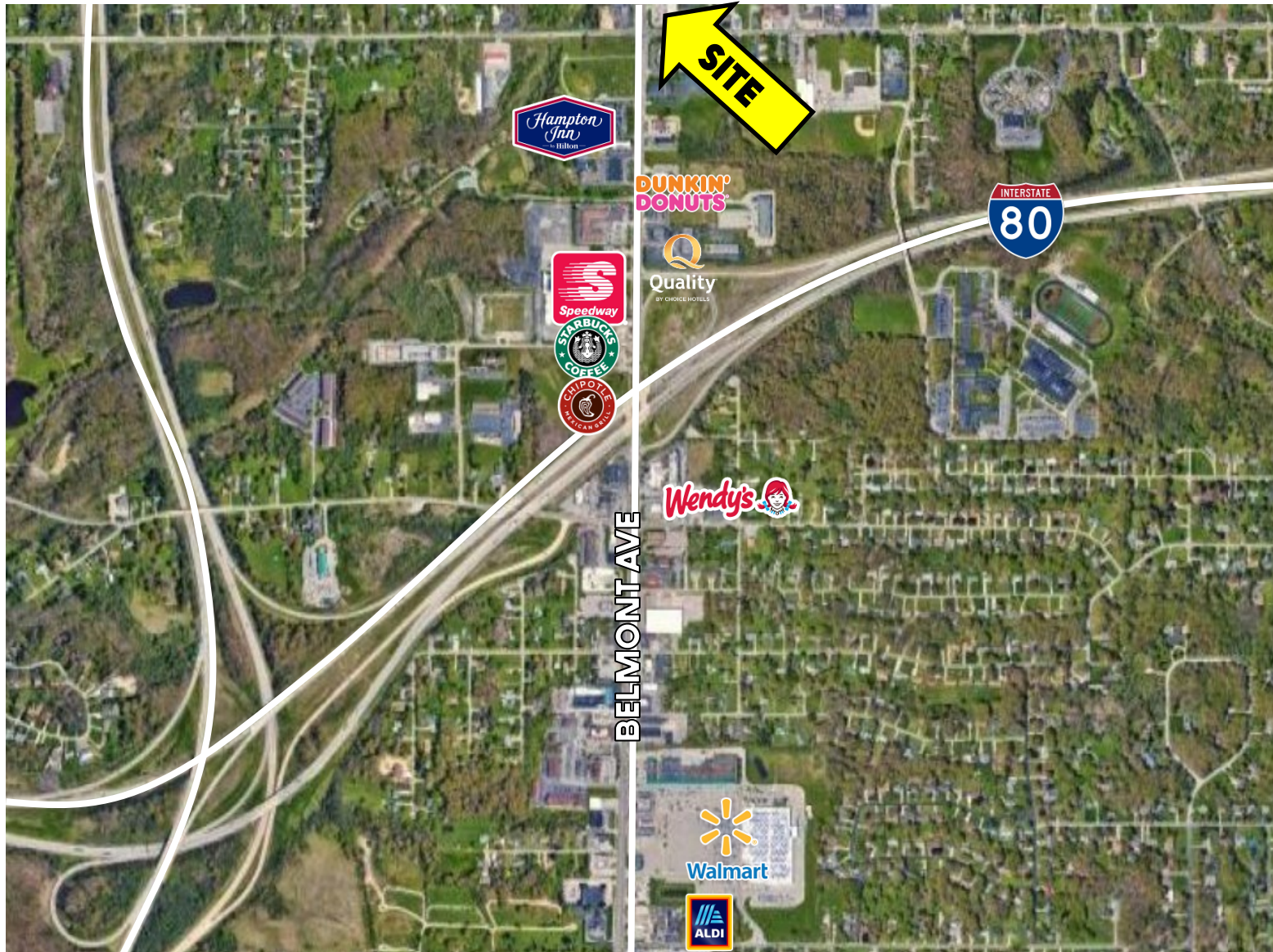
www.PLATZREALTYGROUP.com

Suite 12



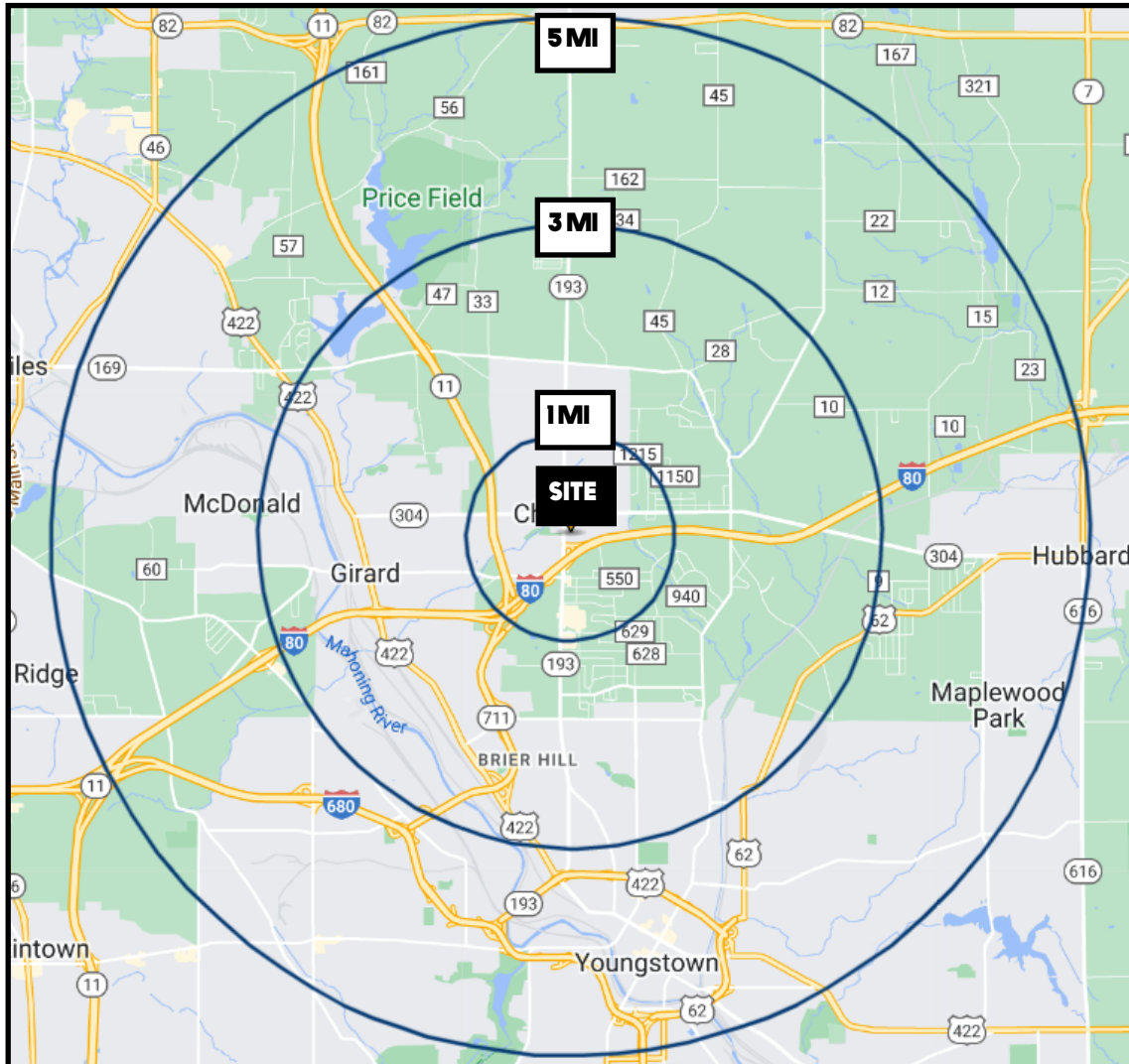
Office: 330.757.4889 | Fax: 330.294.5622 | 3830 Starr Centre Dr, Suite 2, Canfield, OH 44406

www.PLATZREALTYGROUP.com



Office: 330.757.4889 | Fax: 330.294.5622 | 3830 Starr Centre Dr, Suite 2, Canfield, OH 44406

www.PLATZREALTYGROUP.com



DEMOGRAPHICS	1 MI	3 MI	5 MI
POPULATION	3,471	29,269	80,335
HOUSEHOLDS	1,440	12,190	32,281
MEDIAN AGE	47	43	43
AVERAGE HH INCOME	\$60,450	\$59,008	\$53,491

SITE INFORMATION	
LOCATION	Liberty Township Trumbull County
ZONING	Commercial
YEAR BUILT	1981
AVAILABLE	6: 1,800 SF; 4 treatment rooms 9: 2,000 SF 12: 3,300 SF Also available: C, 2C, D, E
RENT	\$7.50/SF NNN
EXTRA CHARGES	\$2.50/SF
UTILITIES	Separately metered

Office: 330.757.4889 | Fax: 330.294.5622 | 3830 Starr Centre Dr, Suite 2, Canfield, OH 44406