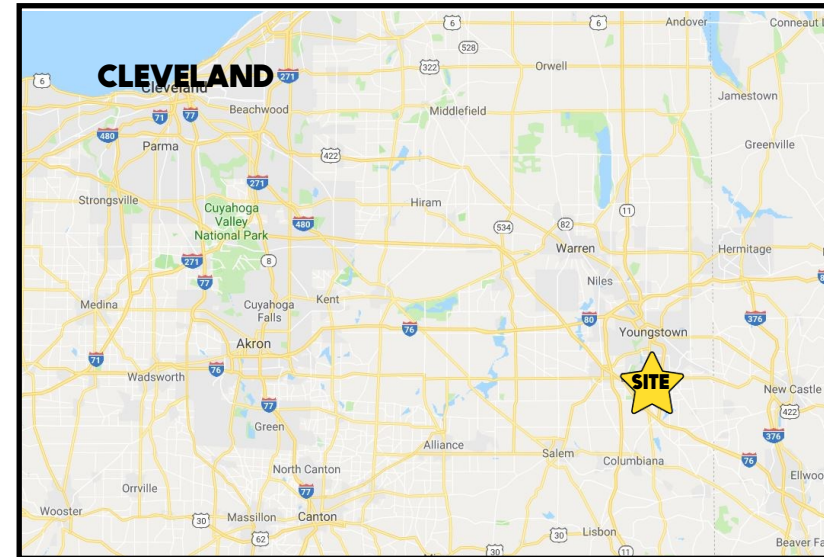


LOCATION

9253 Market St, North Lima, OH 44452



HIGHLIGHTS

- Redevelopment Site - currently a rental house
- 3.7 acres in Beaver Township
- Just south of Western Reserve Rd by Sheetz
- By first full turnpike interchange in Ohio
- Ideal location for retail or office

TRAFFIC

Market St = 13,707 VPD

CONTACT

ADAM DIVELBISS

501.551.3817

adivelbiss@platzrealtygroup.com

MATT WILSON

330.347.9677

mwilson@platzrealtygroup.com

Office: 330.757.4889 | Fax: 330.294.5622 | 3830 Starr Centre Dr, Suite 2, Canfield, OH 44406

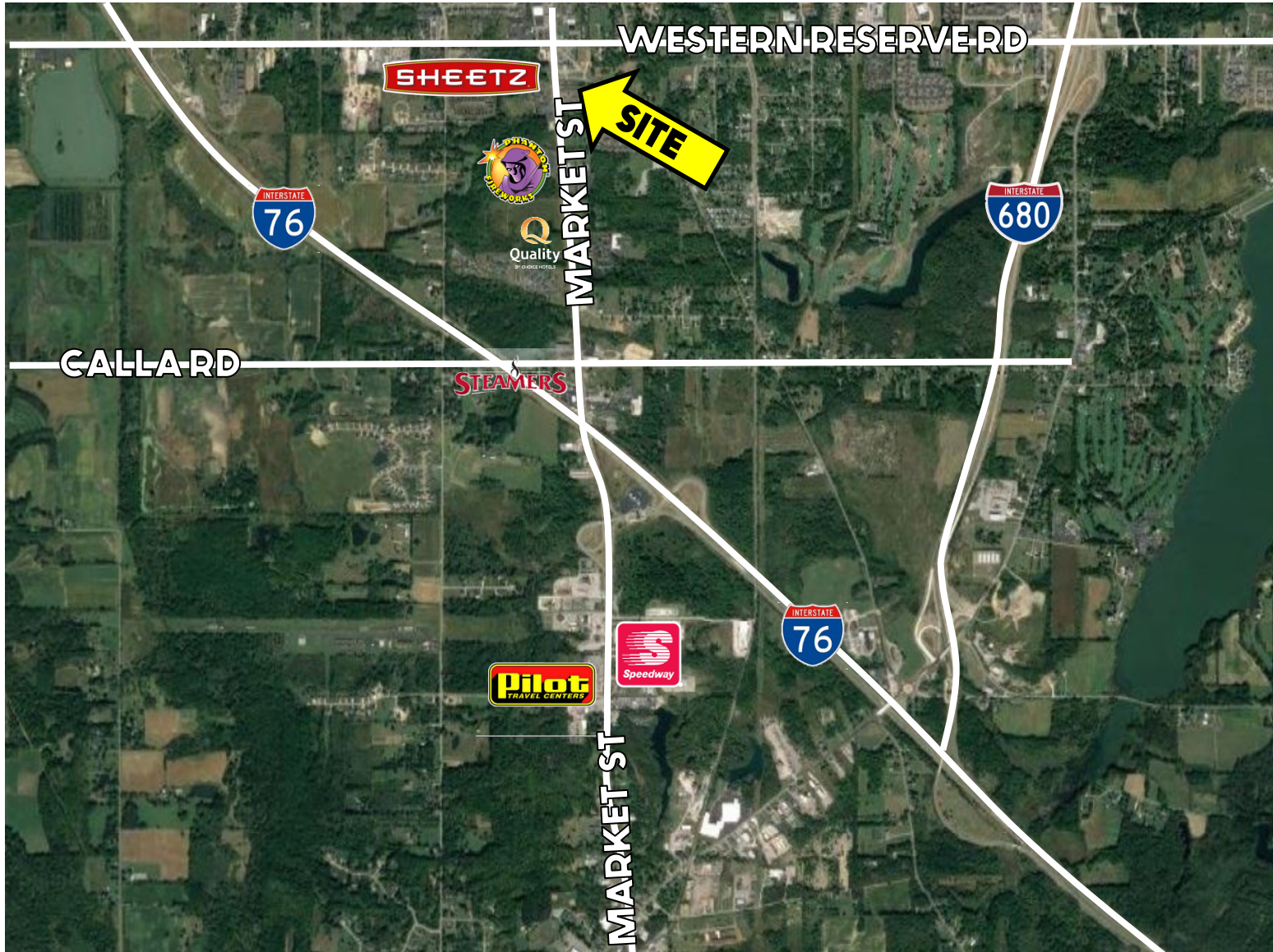
www.PLATZREALTYGROUP.com



Office: 330.757.4889 | Fax: 330.294.5622 | 3830 Starr Centre Dr, Suite 2, Canfield, OH 44406

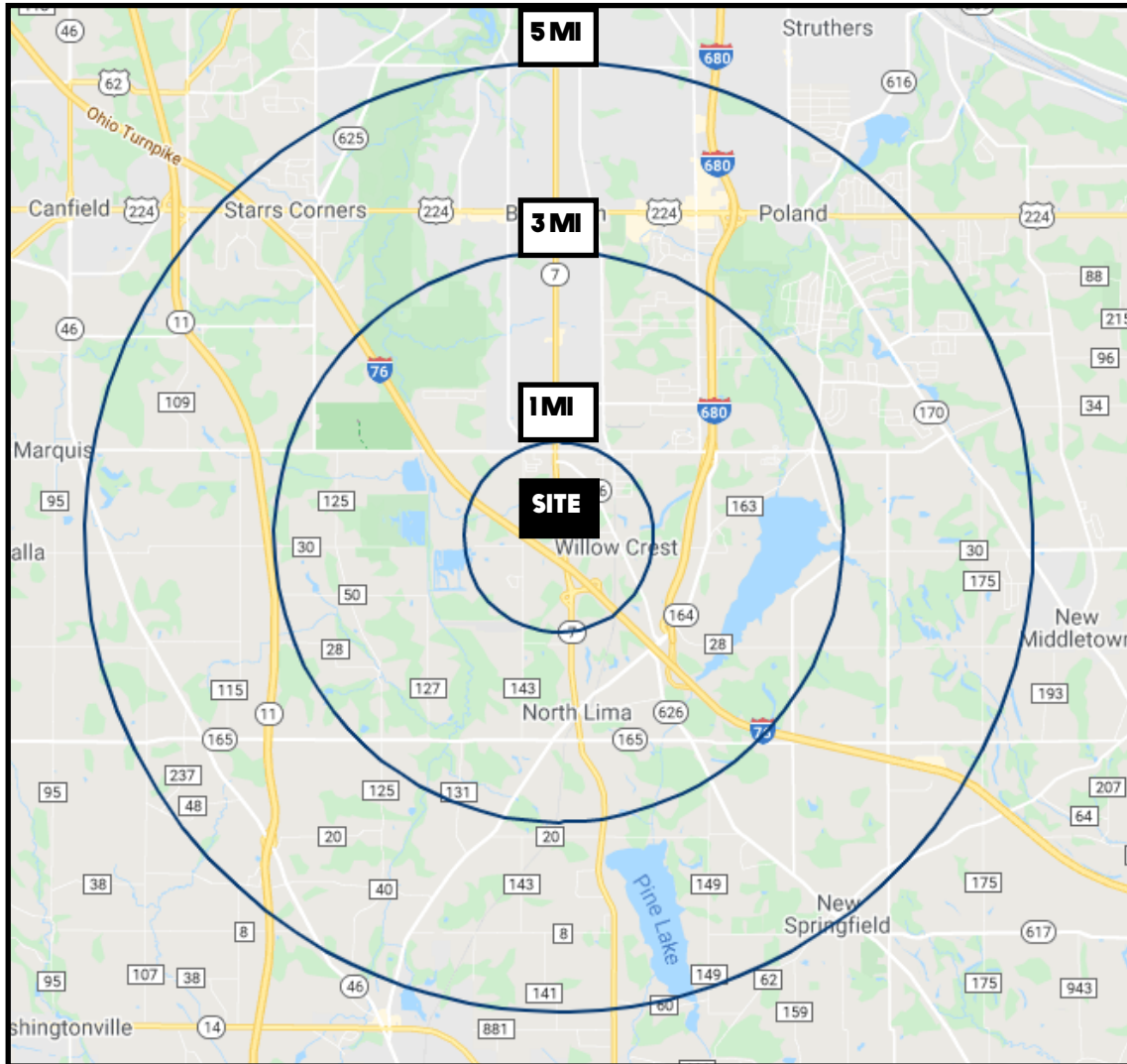
www.PLATZREALTYGROUP.com

The information presented was obtained from sources believed to be true and reliable. The Platz Realty Group makes no warranties or guarantees to the accuracy of the information.



Office: 330.757.4889 | Fax: 330.294.5622 | 3830 Starr Centre Dr, Suite 2, Canfield, OH 44406

www.PLATZREALTYGROUP.com



DEMOGRAPHICS	1 MI	3 MI	5 MI
POPULATION	2,873	17,967	61,789
HOUSEHOLDS	1,290	7,856	26,198
MEDIAN AGE	52	49	46
AVERAGE HH INCOME	\$62,957	\$78,802	\$81,170

SITE INFORMATION

LOCATION	Beaver Township Mahoning County
PROPERTY TYPE	Residential on commercial strip
ZONING	G-C
PARCEL	04-066-0-015
SIZE	3.7 acres
REAL ESTATE TAXES	\$4,287/year
PRICE	\$450,000

Office: 330.757.4889 | Fax: 330.294.5622 | 3830 Starr Centre Dr, Suite 2, Canfield, OH 44406

www.PLATZREALTYGROUP.com