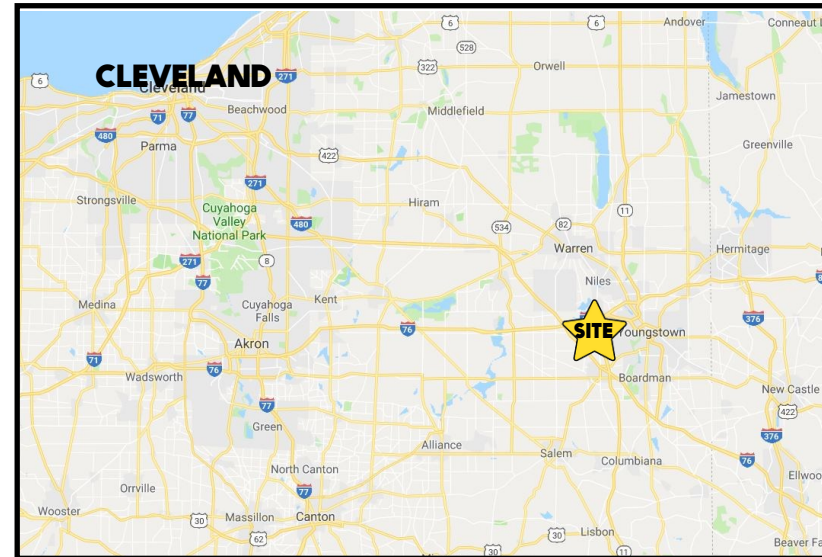


LOCATION

3501 Mahoning Ave, Youngstown, OH 44509



HIGHLIGHTS

- Former Advance Auto
- Located on Mahoning Ave, just east of Meridian Rd - access from both roads
- Retail / flex space with 1 drive-in door
- High traffic location

TRAFFIC

Meridian Rd = 15,268 VPD
Mahoning Ave = 13,317 VPD

CONTACT

BILL KUTLICK

330.565.5701

bkutlick@platzrealtygroup.com

ADAM DIVELBISS

501.551.3817

adivelbiss@platzrealtygroup.com

Office: 330.757.4889 | Fax: 330.294.5622 | 3830 Starr Centre Dr, Suite 2, Canfield, OH 44406

www.PLATZREALTYGROUP.com



Office: 330.757.4889 | Fax: 330.294.5622 | 3830 Starr Centre Dr, Suite 2, Canfield, OH 44406

www.PLATZREALTYGROUP.com

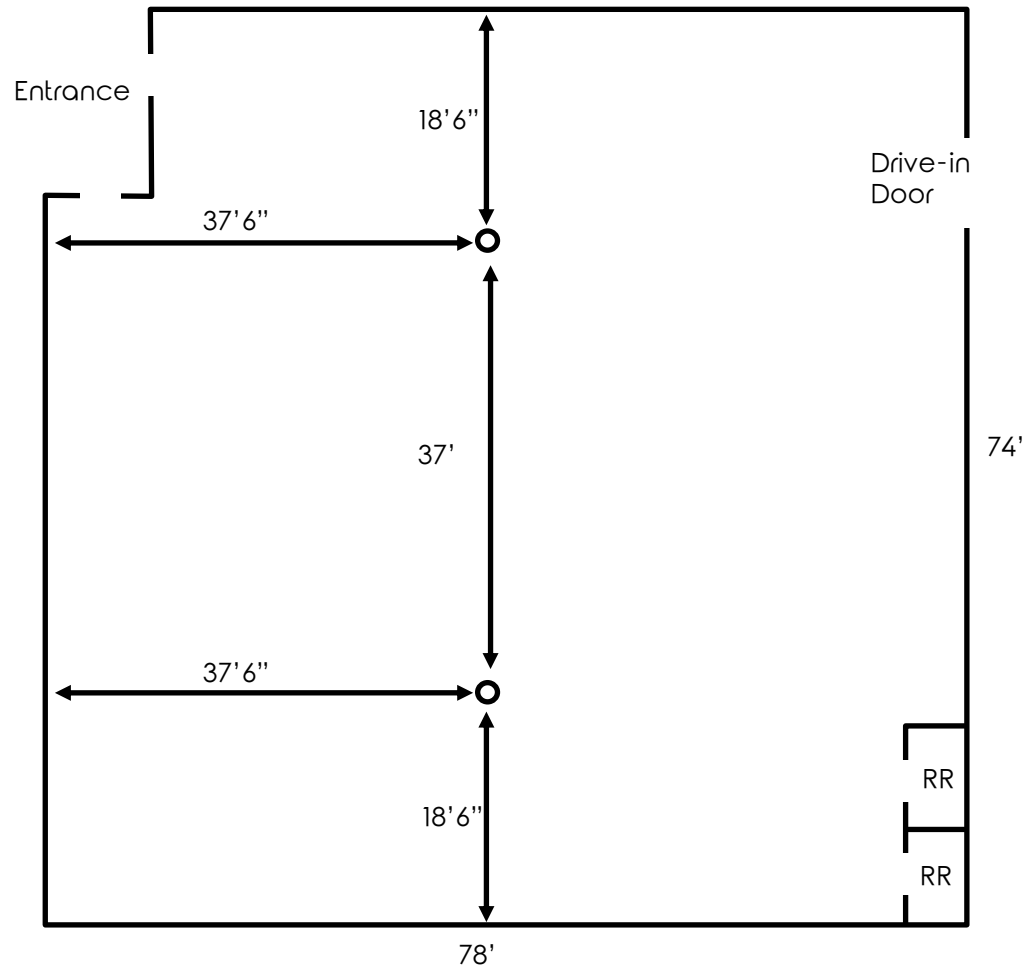
The information presented was obtained from sources believed to be true and reliable. The Platz Realty Group makes no warranties or guarantees to the accuracy of the information.



Office: 330.757.4889 | Fax: 330.294.5622 | 3830 Starr Centre Dr, Suite 2, Canfield, OH 44406

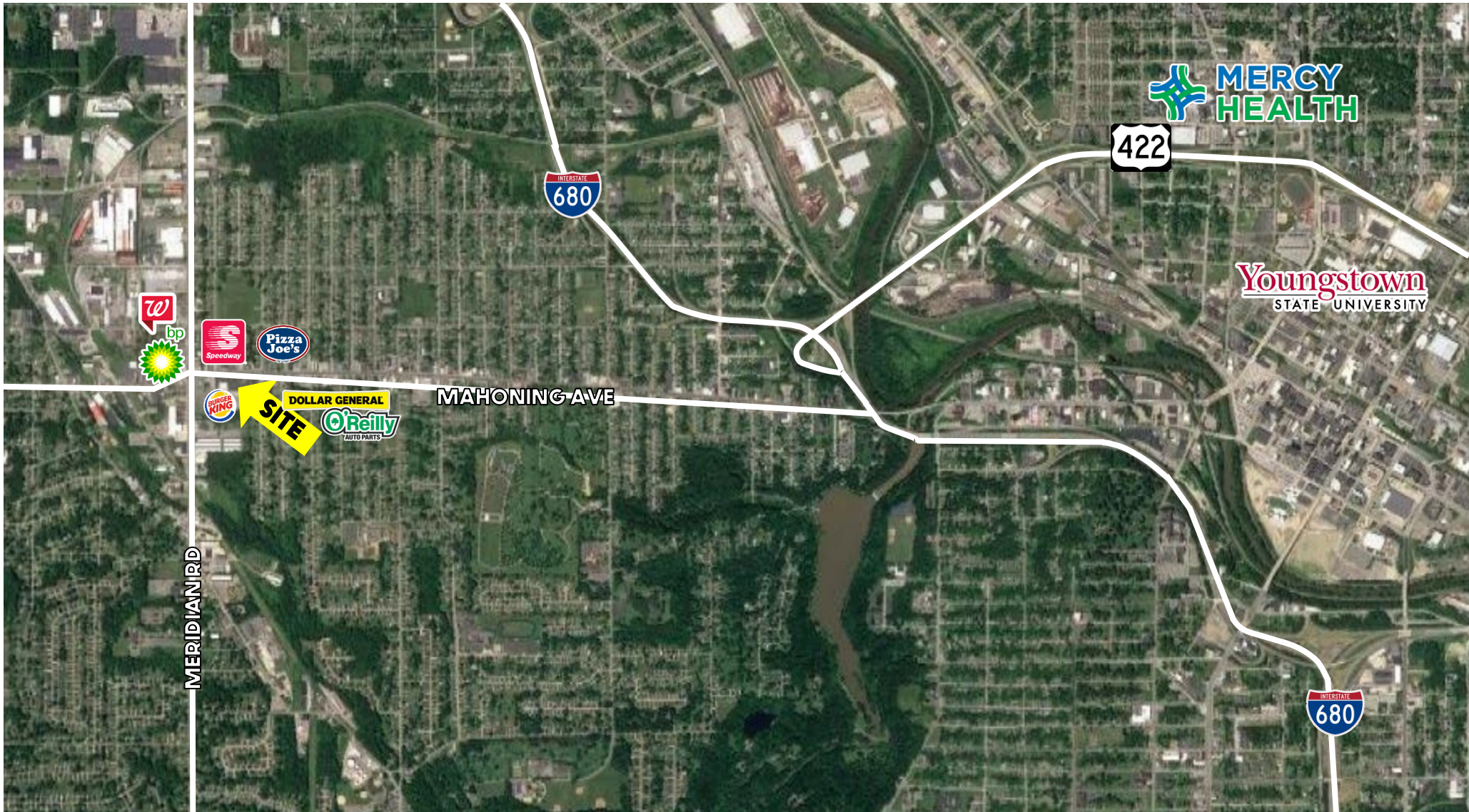
www.PLATZREALTYGROUP.com

The information presented was obtained from sources believed to be true and reliable. The Platz Realty Group makes no warranties or guarantees to the accuracy of the information.



Office: 330.757.4889 | Fax: 330.294.5622 | 3830 Starr Centre Dr, Suite 2, Canfield, OH 44406

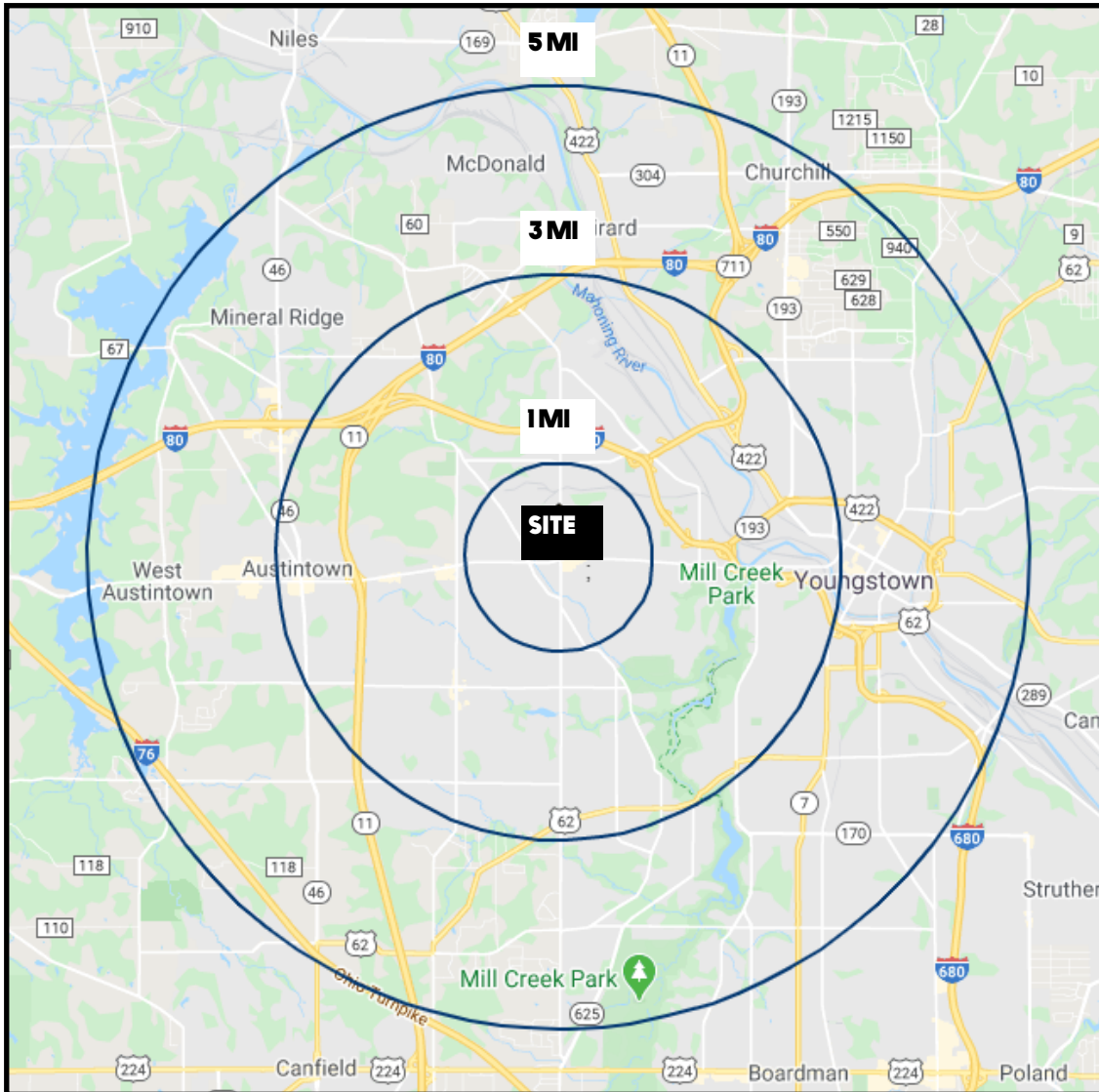
www.PLATZREALTYGROUP.com



Office: 330.757.4889 | Fax: 330.294.5622 | 3830 Starr Centre Dr, Suite 2, Canfield, OH 44406

www.PLATZREALTYGROUP.com

The information presented was obtained from sources believed to be true and reliable. The Platz Realty Group makes no warranties or guarantees to the accuracy of the information.



DEMOGRAPHICS	1 MI	3 MI	5 MI
POPULATION	8,839	50,808	128,577
HOUSEHOLDS	3,785	22,074	52,634
AVERAGE AGE	40	42	41
MEDIAN HH INCOME	\$39,113	\$39,230	\$41,303

SITE INFORMATION	
LOCATION	Youngstown City Mahoning County
PARCEL	53-069-0-226
SIZE	5,675 SF
YEAR BUILT	1998
ACRES	.47 acres
ZONING	MU-C
REAL ESTATE TAXES	\$8,256/year
PRICE	Call for pricing

Office: 330.757.4889 | Fax: 330.294.5622 | 3830 Starr Centre Dr, Suite 2, Canfield, OH 44406