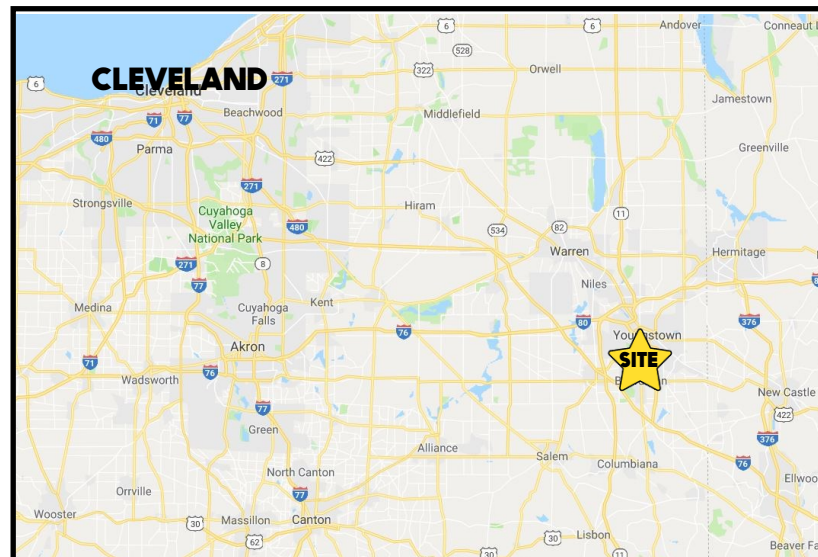


LOCATION

4921-4927 Market St, Boardman, OH 44512



TRAFFIC

Market St = 14,114 VPD

HIGHLIGHTS

- Multi-tenant plaza on Market St in Boardman, OH
- Freshly painted unit
- 1,400 SF space with conference room, break room, private office, and a restroom
- Front door parking

CONTACT

THERESA MORSE

330.518.6082

tmorse@platzrealtygroup.com

Office: 330.757.4889 | Fax: 330.294.5622 | 3830 Starr Centre Dr, Suite 2, Canfield, OH 44406

www.PLATZREALTYGROUP.com



Office: 330.757.4889 | Fax: 330.294.5622 | 3830 Starr Centre Dr, Suite 2, Canfield, OH 44406

www.PLATZREALTYGROUP.com

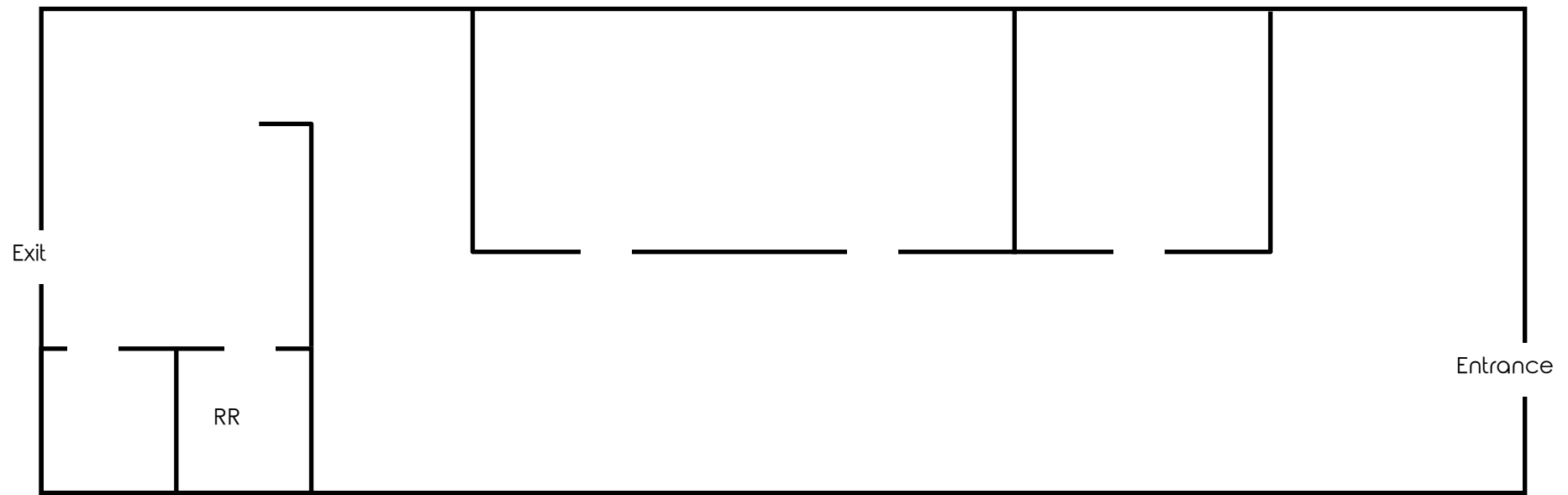
The information presented was obtained from sources believed to be true and reliable. The Platz Realty Group makes no warranties or guarantees to the accuracy of the information.



Office: 330.757.4889 | Fax: 330.294.5622 | 3830 Starr Centre Dr, Suite 2, Canfield, OH 44406

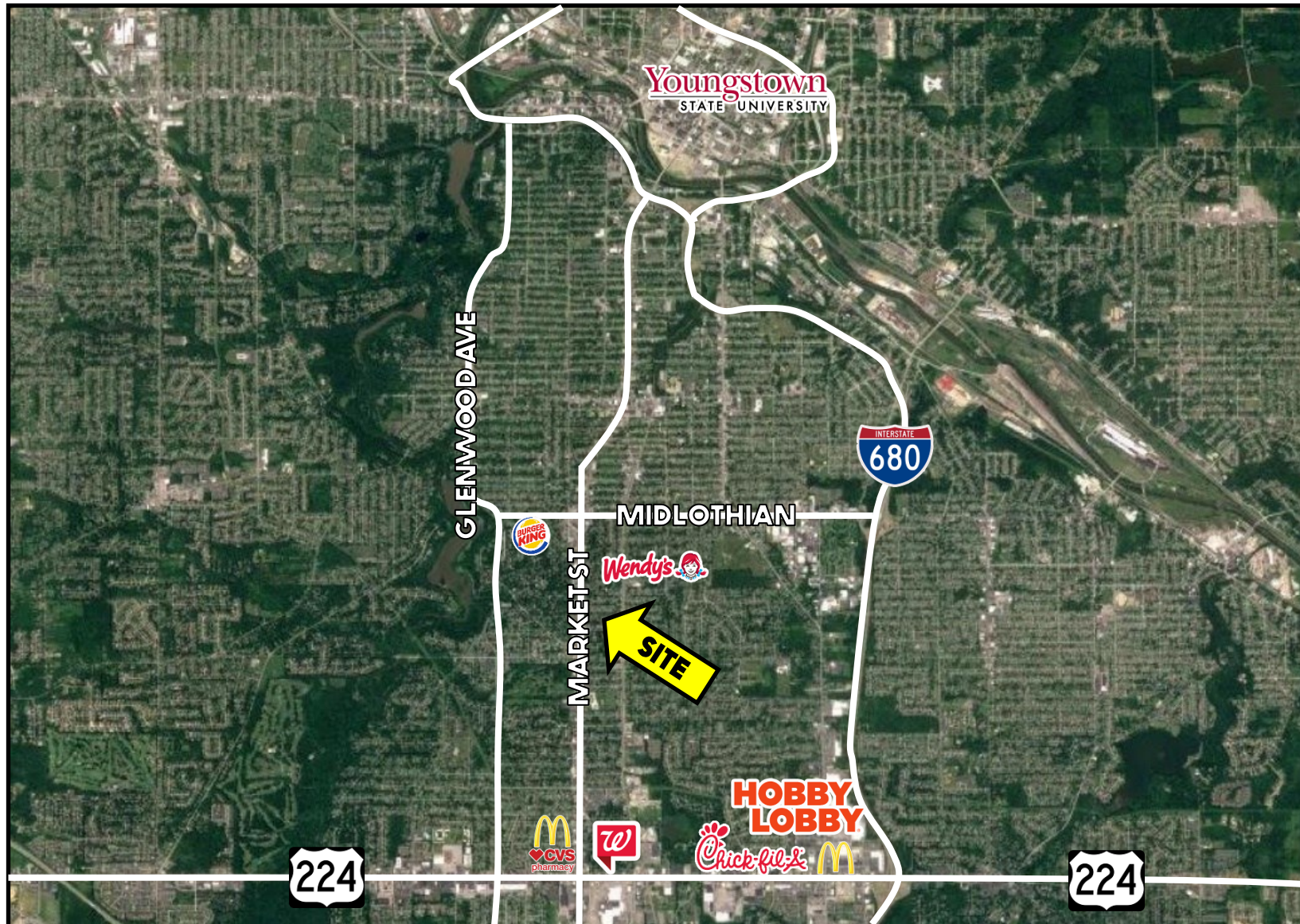
www.PLATZREALTYGROUP.com

The information presented was obtained from sources believed to be true and reliable. The Platz Realty Group makes no warranties or guarantees to the accuracy of the information.



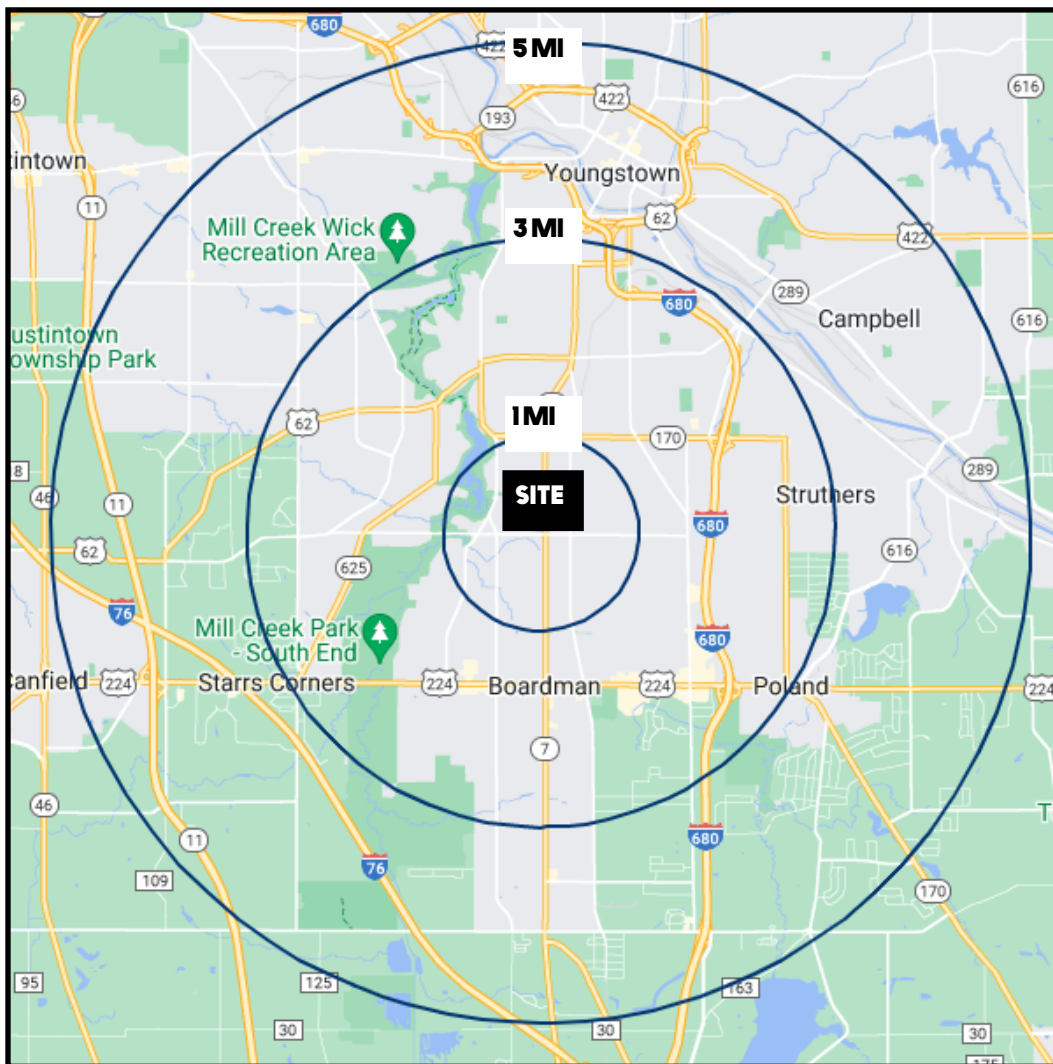
Office: 330.757.4889 | Fax: 330.294.5622 | 3830 Starr Centre Dr, Suite 2, Canfield, OH 44406

www.PLATZREALTYGROUP.com



Office: 330.757.4889 | Fax: 330.294.5622 | 3830 Starr Centre Dr, Suite 2, Canfield, OH 44406

www.PLATZREALTYGROUP.com



| DEMOGRAPHICS | 1 MI | 3 MI | 5 MI |
|--------------------------|----------|----------|----------|
| POPULATION | 11,792 | 65,710 | 146,121 |
| HOUSEHOLDS | 5,019 | 28,216 | 60,682 |
| MEDIAN AGE | 40 | 43 | 42 |
| AVERAGE HH INCOME | \$61,382 | \$60,301 | \$61,557 |

SITE INFORMATION

| | |
|------------------|--------------------------------------|
| LOCATION | Boardman Township Mahoning County |
| SIGNAGE | Building and pylon signage |
| UTILITIES | Included in rent |
| AVAILABLE | Unit 6: 1,400 SF |
| RENT | \$1,200/month |

Office: 330.757.4889 | Fax: 330.294.5622 | 3830 Starr Centre Dr, Suite 2, Canfield, OH 44406

www.PLATZREALTYGROUP.com