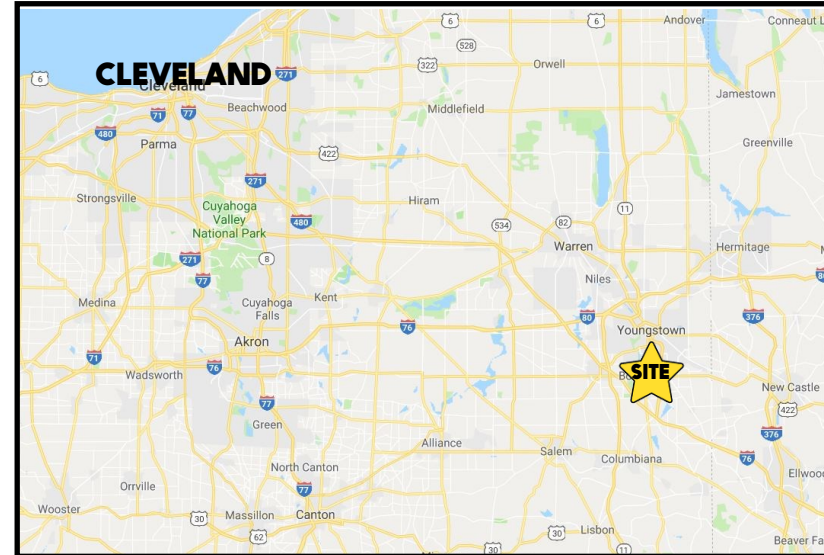


LOCATION

810 Ron Park Place, Boardman, OH 44512



TRAFFIC

Boardman Canfield Rd = 33,649 VPD

HIGHLIGHTS

- Newly renovated medical office condo
- Large, first floor space with waiting room, large front desk area, private doctor office w/full bath and shower, and several exam rooms
- Lots of parking available

CONTACT

THERESA MORSE

330.518.6082

tmorse@platzrealtygroup.com

Office: 330.757.4889 | Fax: 330.294.5622 | 3768 Boardman Canfield Rd, Canfield, OH 44406

www.PLATZREALTYGROUP.com



Office: 330.757.4889 | Fax: 330.294.5622 | 3768 Boardman Canfield Rd, Canfield, OH 44406

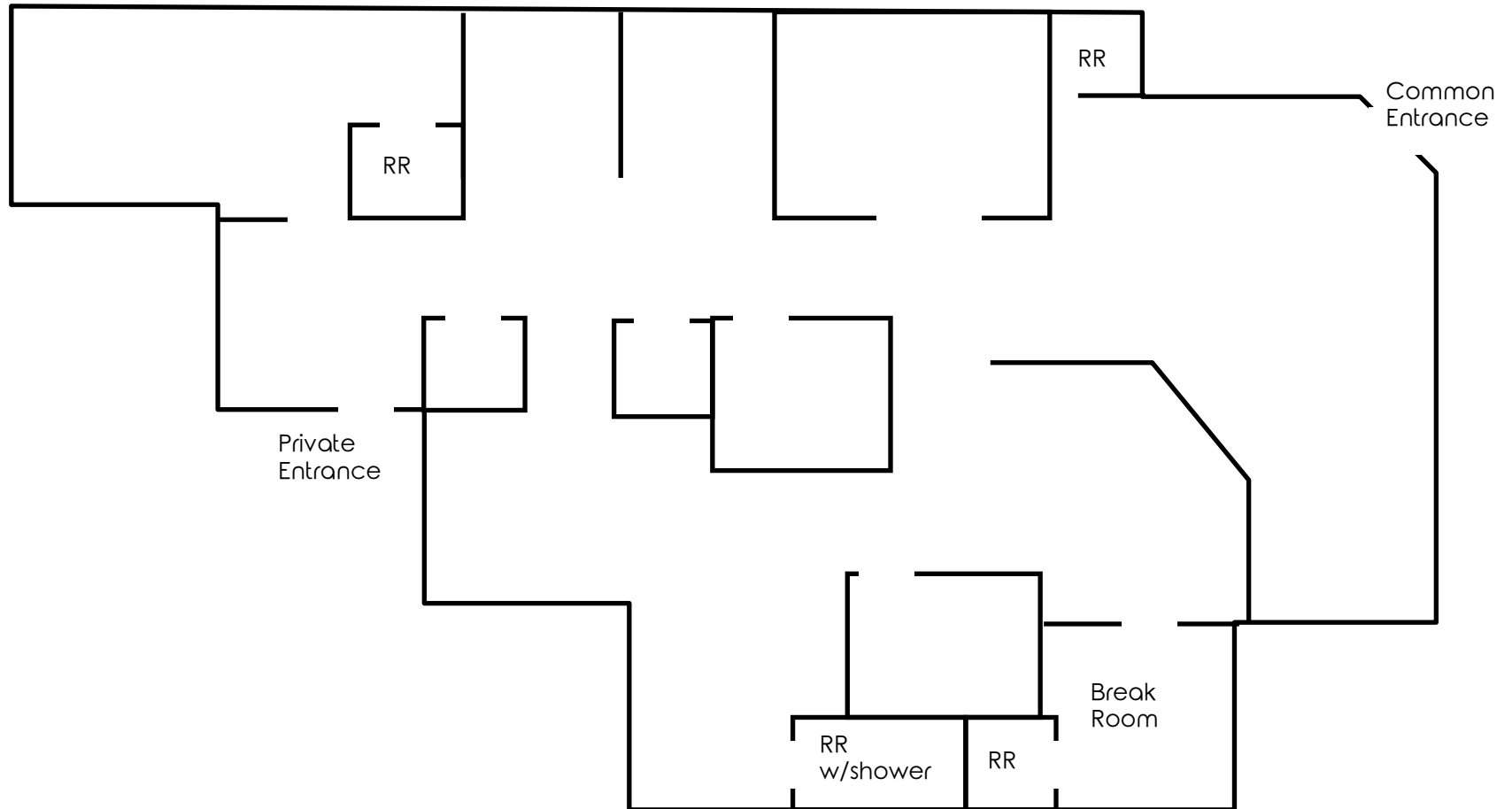
www.PLATZREALTYGROUP.com

The information presented was obtained from sources believed to be true and reliable. The Platz Realty Group makes no warranties or guarantees to the accuracy of the information.



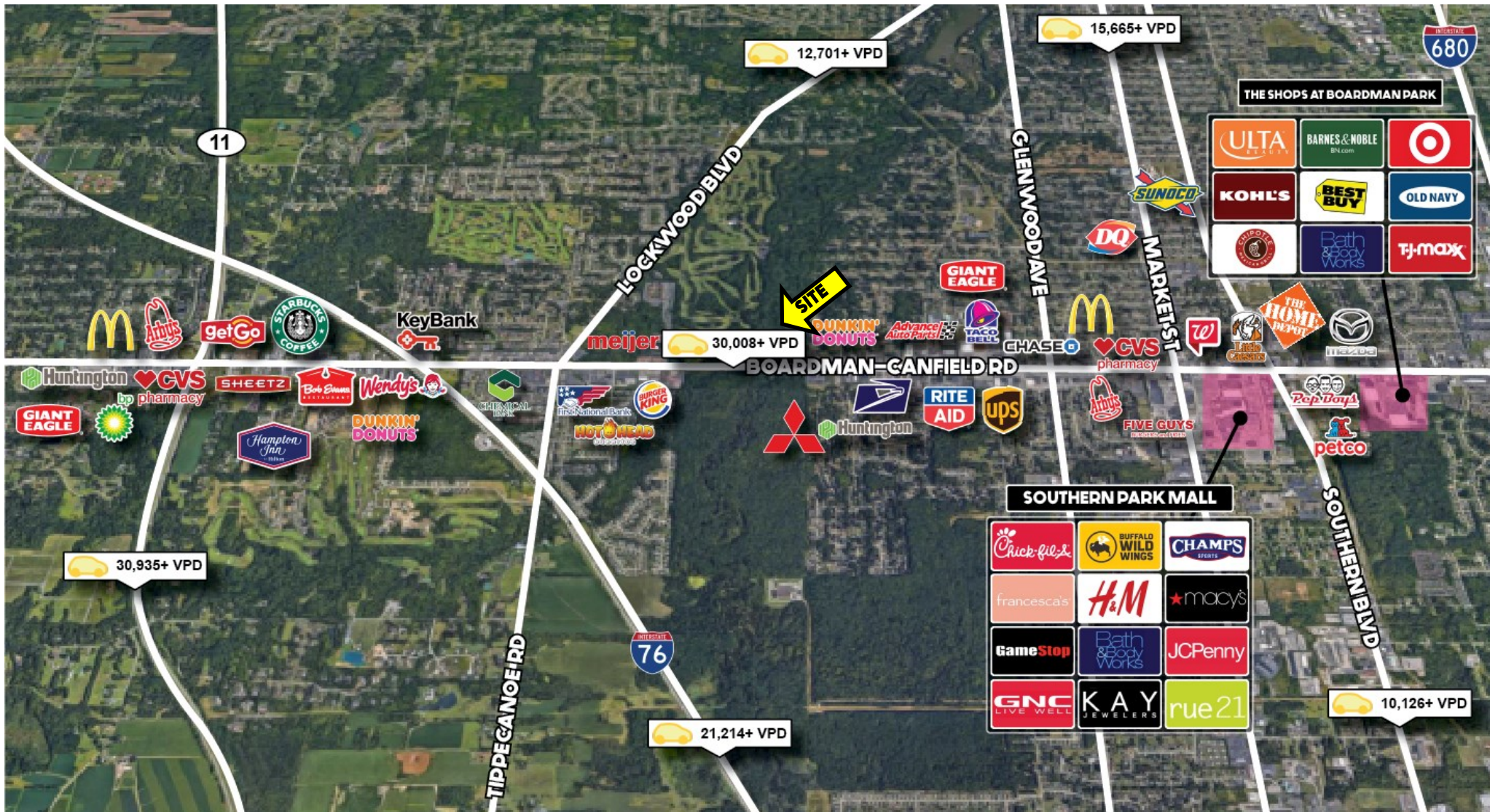
Office: 330.757.4889 | Fax: 330.294.5622 | 3768 Boardman Canfield Rd, Canfield, OH 44406

www.PLATZREALTYGROUP.com



Office: 330.757.4889 | Fax: 330.294.5622 | 3768 Boardman Canfield Rd, Canfield, OH 44406

www.PLATZREALTYGROUP.com



Office: 330.757.4889 | Fax: 330.294.5622 | 3768 Boardman Canfield Rd, Canfield, OH 44406

www.PLATZREALTYGROUP.com

