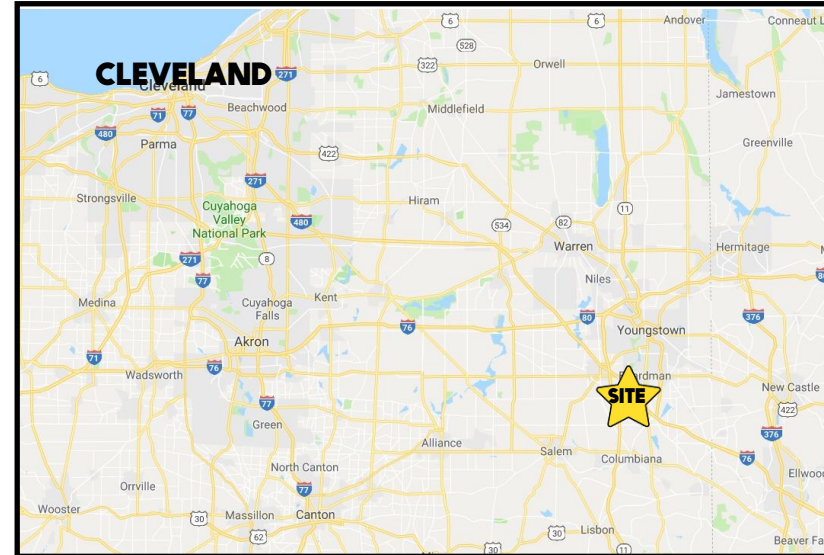


LOCATION

W. Middletown Rd, North Lima, OH 44452



HIGHLIGHTS

- 5.6 acres in Beaver Township
- Just west of Market St (SR 7)
- Adjacent to Pilot and McDonalds, close to Steamers and Chalet Premier
- Just south of I-76 (OH Turnpike) ramp

TRAFFIC

Market St = 12,163 VPD

CONTACT

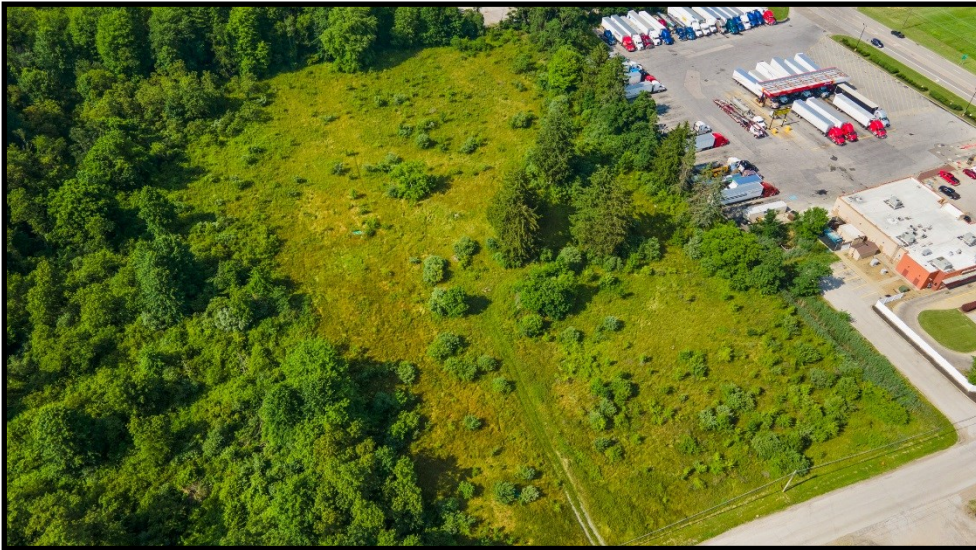
GARY LASKO

330.509.4546

glasko@platzrealtygroup.com

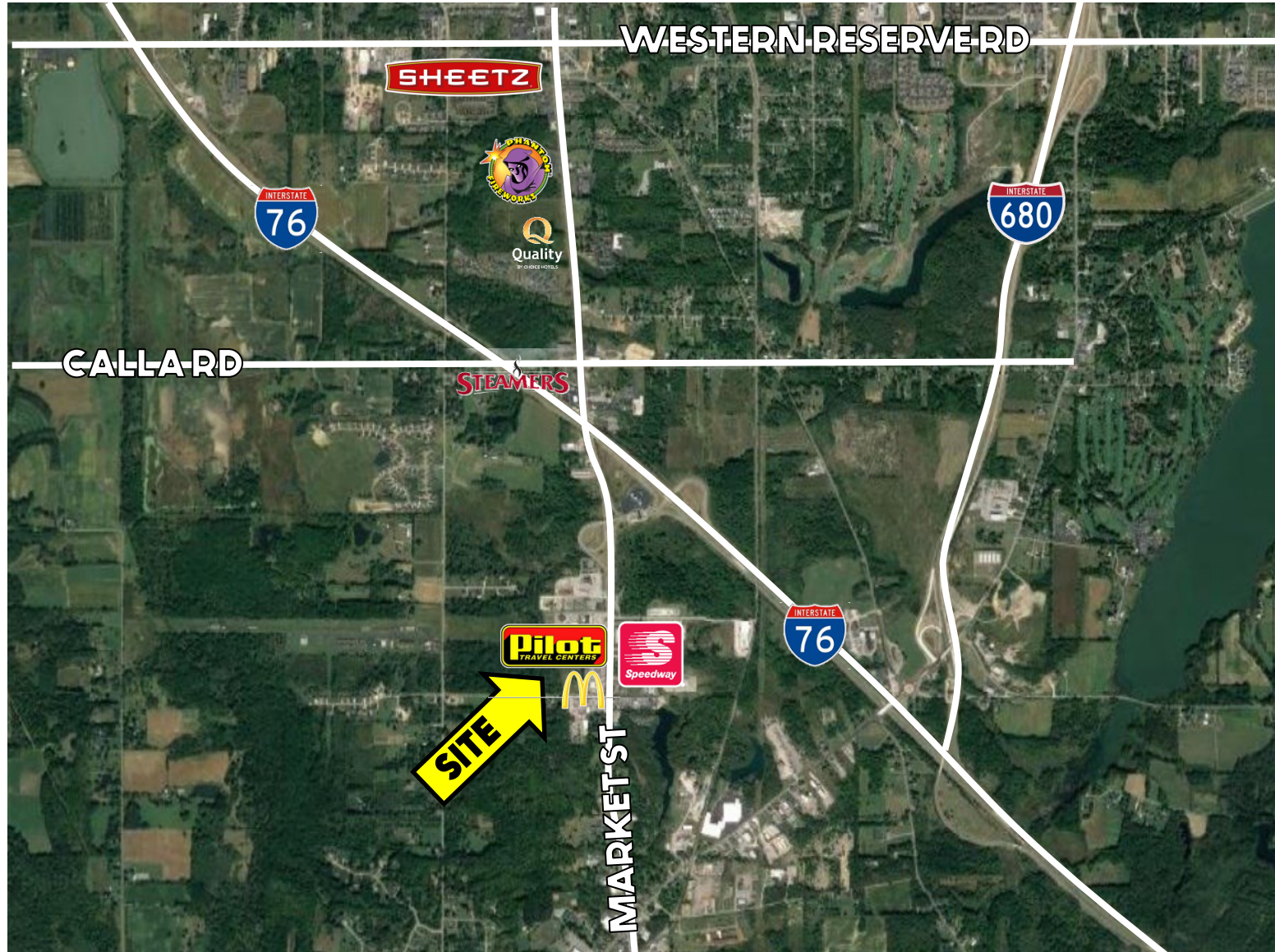
Office: 330.757.4889 | Fax: 330.294.5622 | 3768 Boardman Canfield Rd, Canfield, OH 44406

www.PLATZREALTYGROUP.com



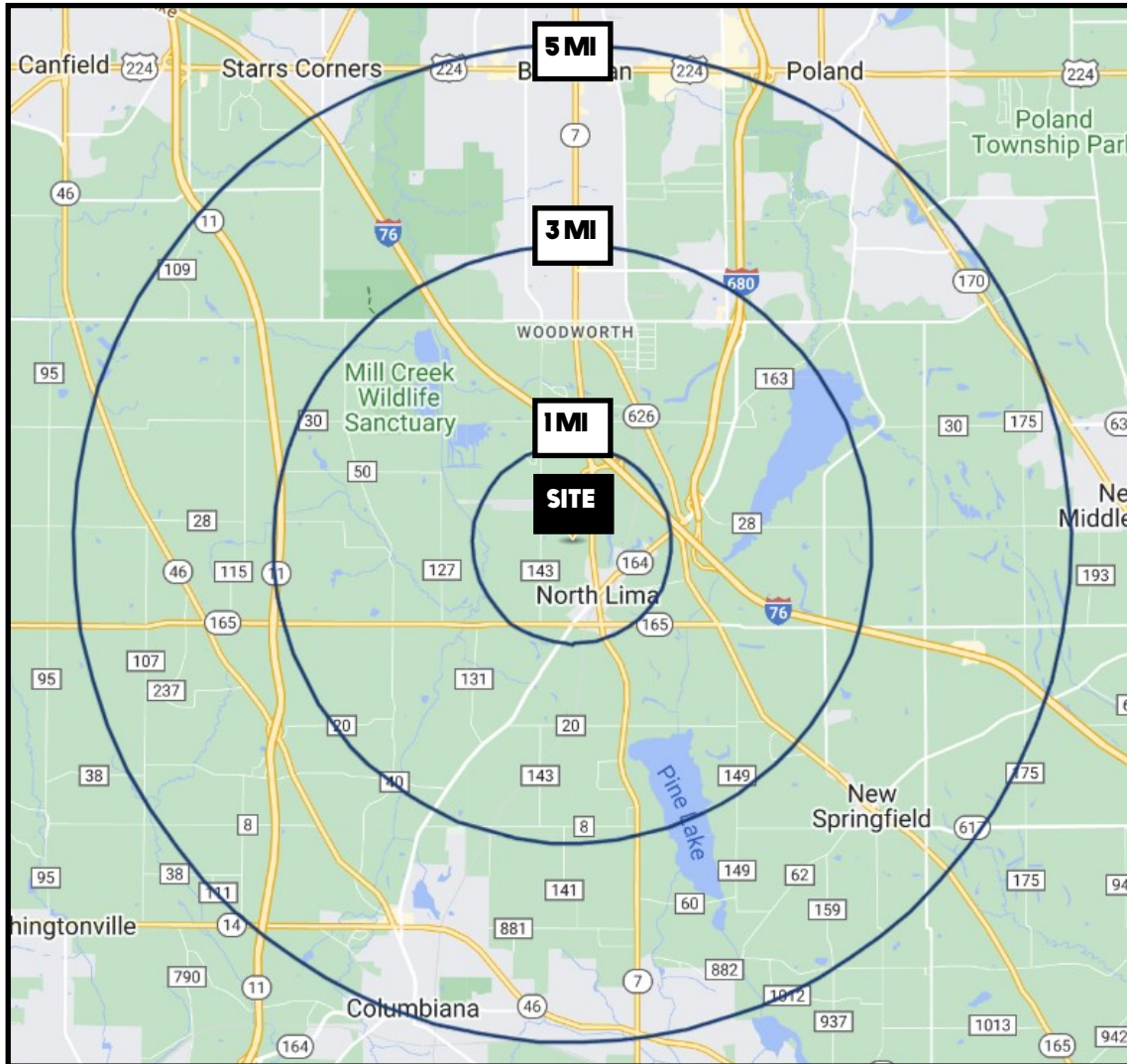
Office: 330.757.4889 | Fax: 330.294.5622 | 3768 Boardman Canfield Rd, Canfield, OH 44406

www.PLATZREALTYGROUP.com



Office: 330.757.4889 | Fax: 330.294.5622 | 3768 Boardman Canfield Rd, Canfield, OH 44406

www.PLATZREALTYGROUP.com



DEMOGRAPHICS	1 MI	3 MI	5 MI
POPULATION	768	7,528	32,268
HOUSEHOLDS	288	3,133	13,644
MEDIAN AGE	49	50	48
AVERAGE HH INCOME	\$90,371	\$77,530	\$82,357

SITE INFORMATION

LOCATION	Beaver Township Mahoning County
PARCEL	05-061-0-004
PROPERTY TYPE	Commercial Land
ZONING	General Commercial
SIZE	5.6 acres
UTILITIES	City water, septic Sewer on Market St
REAL ESTATE TAXES	\$1,257/year
PRICE	\$250,000

Office: 330.757.4889 | Fax: 330.294.5622 | 3768 Boardman Canfield Rd, Canfield, OH 44406