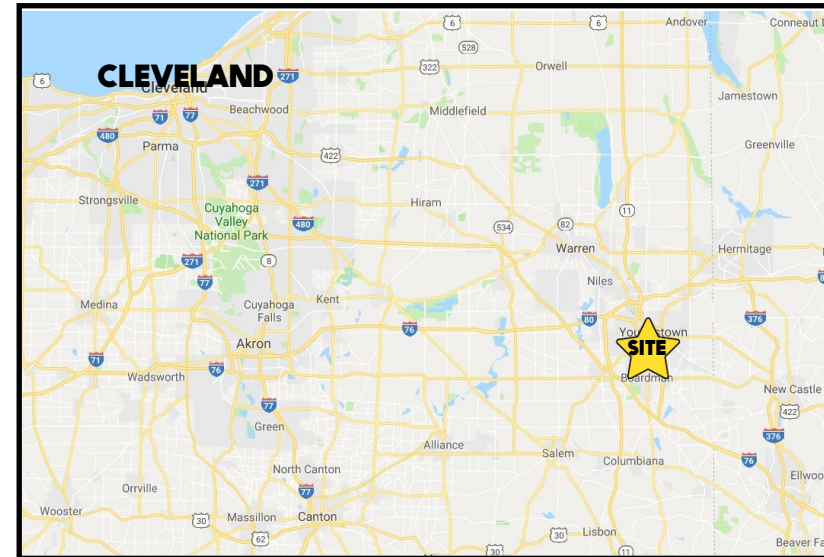


LOCATION

4176 Market St, Boardman, OH 44512



TRAFFIC

Market St = 16,665 VPD

HIGHLIGHTS

- Approximately 800 SF retail space
- Front door parking
- Great signage on Market St
- Heavy daytime traffic
- Just south of Midlothian Blvd

CONTACT

THERESA MORSE

330.518.6082

tmorse@platzrealtygroup.com

Office: 330.757.4889 | Fax: 330.294.5622 | 3830 Starr Centre Dr, Suite 2, Canfield, OH 44406

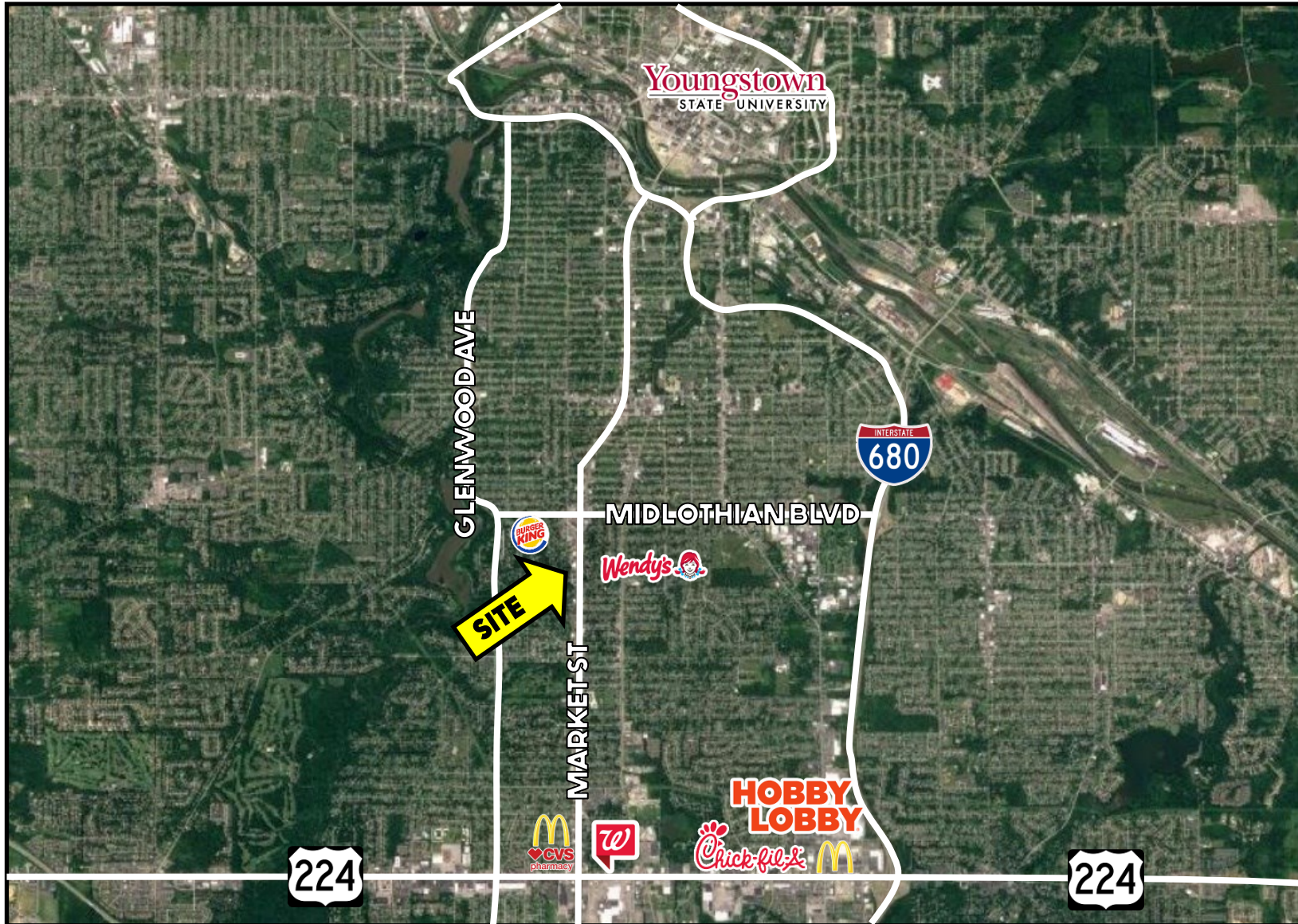
www.PLATZREALTYGROUP.com



Office: 330.757.4889 | Fax: 330.294.5622 | 3830 Starr Centre Dr, Suite 2, Canfield, OH 44406

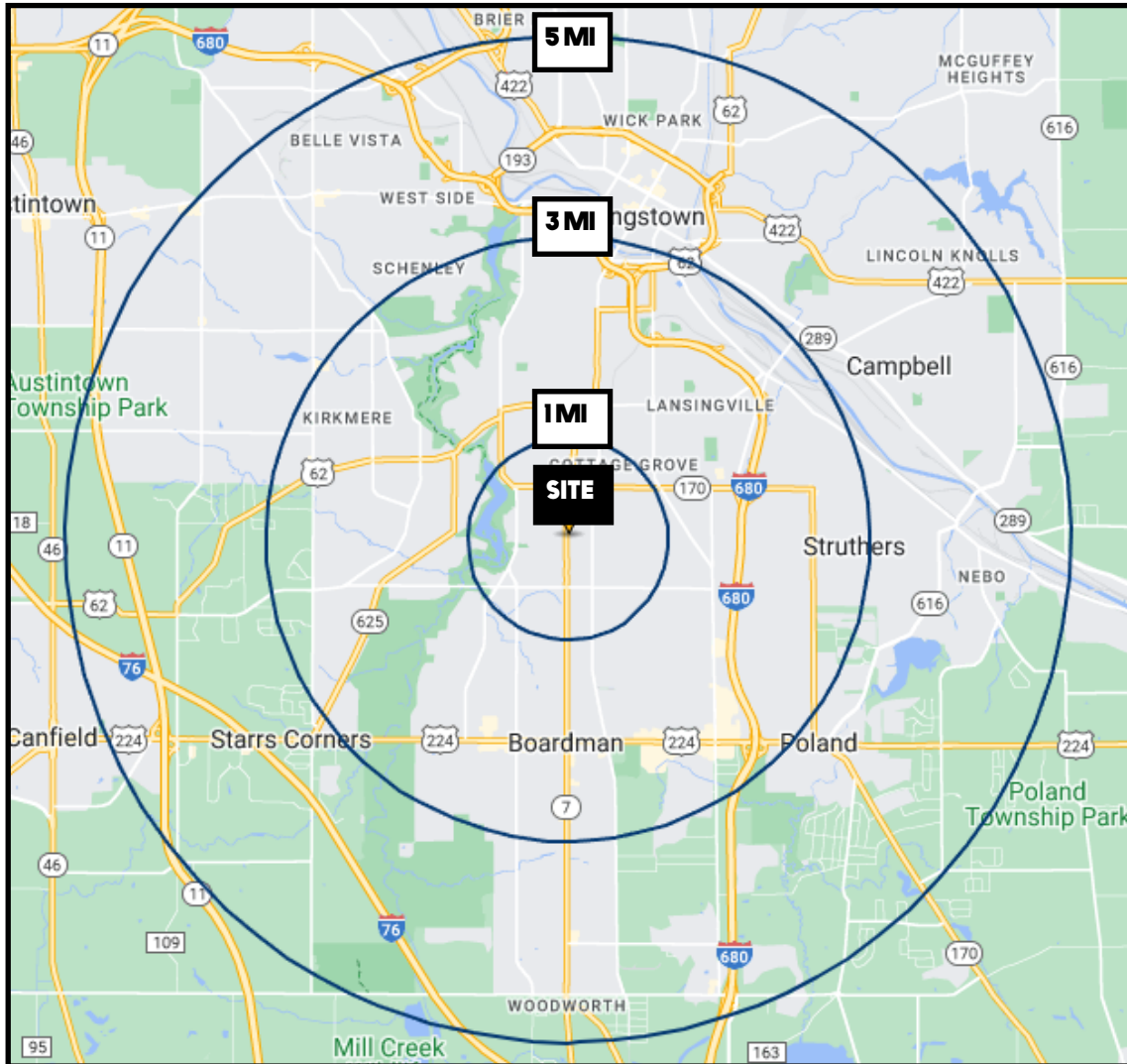
www.PLATZREALTYGROUP.com

The information presented was obtained from sources believed to be true and reliable. The Platz Realty Group makes no warranties or guarantees to the accuracy of the information.



Office: 330.757.4889 | Fax: 330.294.5622 | 3830 Starr Centre Dr, Suite 2, Canfield, OH 44406

www.PLATZREALTYGROUP.com



DEMOGRAPHICS	1 MI	3 MI	5 MI
POPULATION	11,665	65,714	149,081
HOUSEHOLDS	4,866	28,171	61,721
MEDIAN AGE	39	43	43
AVERAGE HH INCOME	\$55,370	\$58,289	\$59,958

SITE INFORMATION	
LOCATION	Boardman Township Mahoning County
PROPERTY TYPE	Retail Plaza
ZONING	North Market Business
SIZE	Available: 800 SF Extra warehouse space available
SIGNAGE	Pylon and signage
PARKING	Front door parking
RENT	\$850/month Gross Includes utilities

Office: 330.757.4889 | Fax: 330.294.5622 | 3830 Starr Centre Dr, Suite 2, Canfield, OH 44406