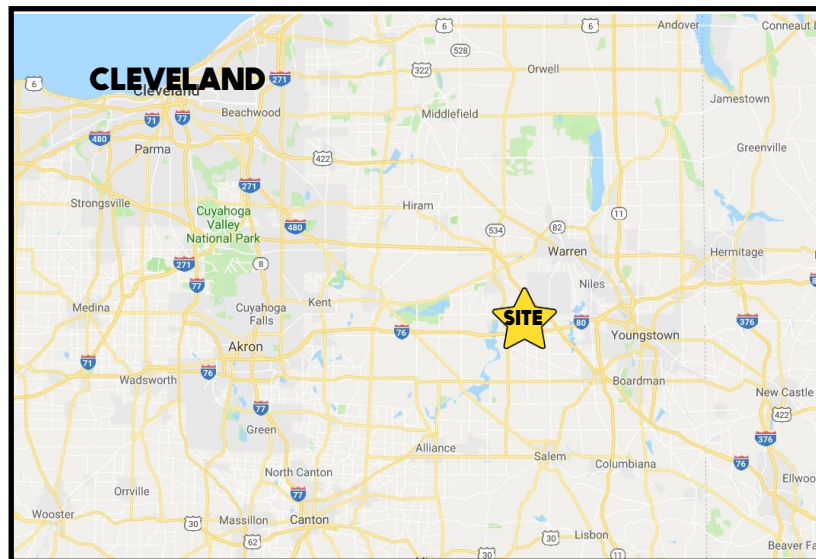


LOCATION

1432 N. Bailey Rd, North Jackson, OH 44451



TRAFFIC

I-76 = 38,680 VPD

Bailey Rd = 7,912 VPD

HIGHLIGHTS

- Excellent Industrial Opportunity
- 77+ acres across from Leonard Truck and Trailer
- Excellent visibility from I-76 with over 1,400' frontage
- 1/2 mile from I-76 Interchange
- 2.7 miles to I-80/TJX/Foxconn/Ultium Cells

CONTACT

ADAM DIVEBISS

501.551.3817 adivelbiss@platzrealtygroup.com

BOB MCGOVERN

330.501.6500 bmcgovern@platzrealtygroup.com

Office: 330.757.4889 | Fax: 330.294.5622 | 3768 Boardman Canfield Rd, Canfield, OH 44406

www.PLATZREALTYGROUP.com



Office: 330.757.4889 | Fax: 330.294.5622 | 3768 Boardman Canfield Rd, Canfield, OH 44406

www.PLATZREALTYGROUP.com

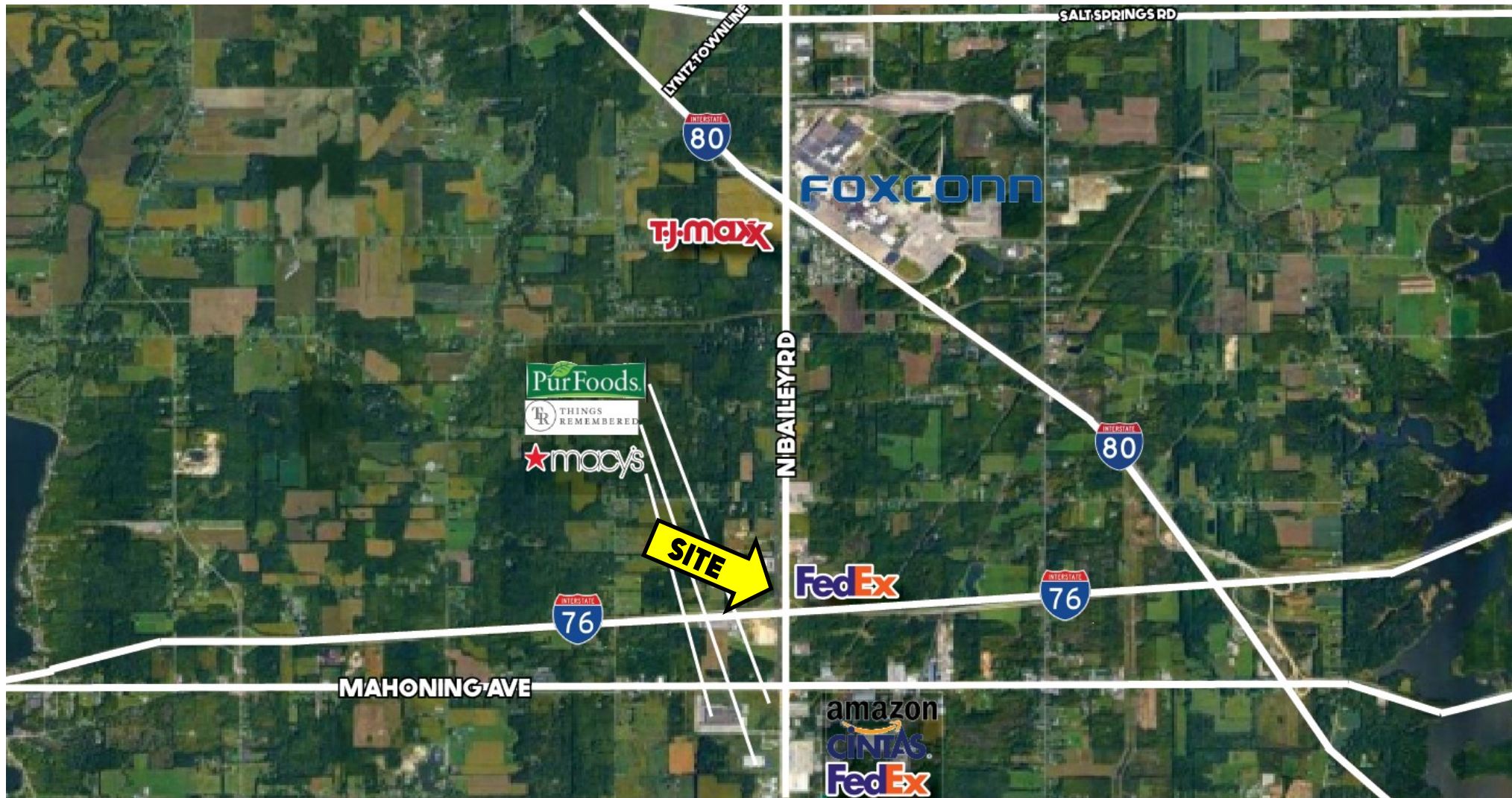
The information presented was obtained from sources believed to be true and reliable. The Platz Realty Group makes no warranties or guarantees to the accuracy of the information.



Office: 330.757.4889 | Fax: 330.294.5622 | 3768 Boardman Canfield Rd, Canfield, OH 44406

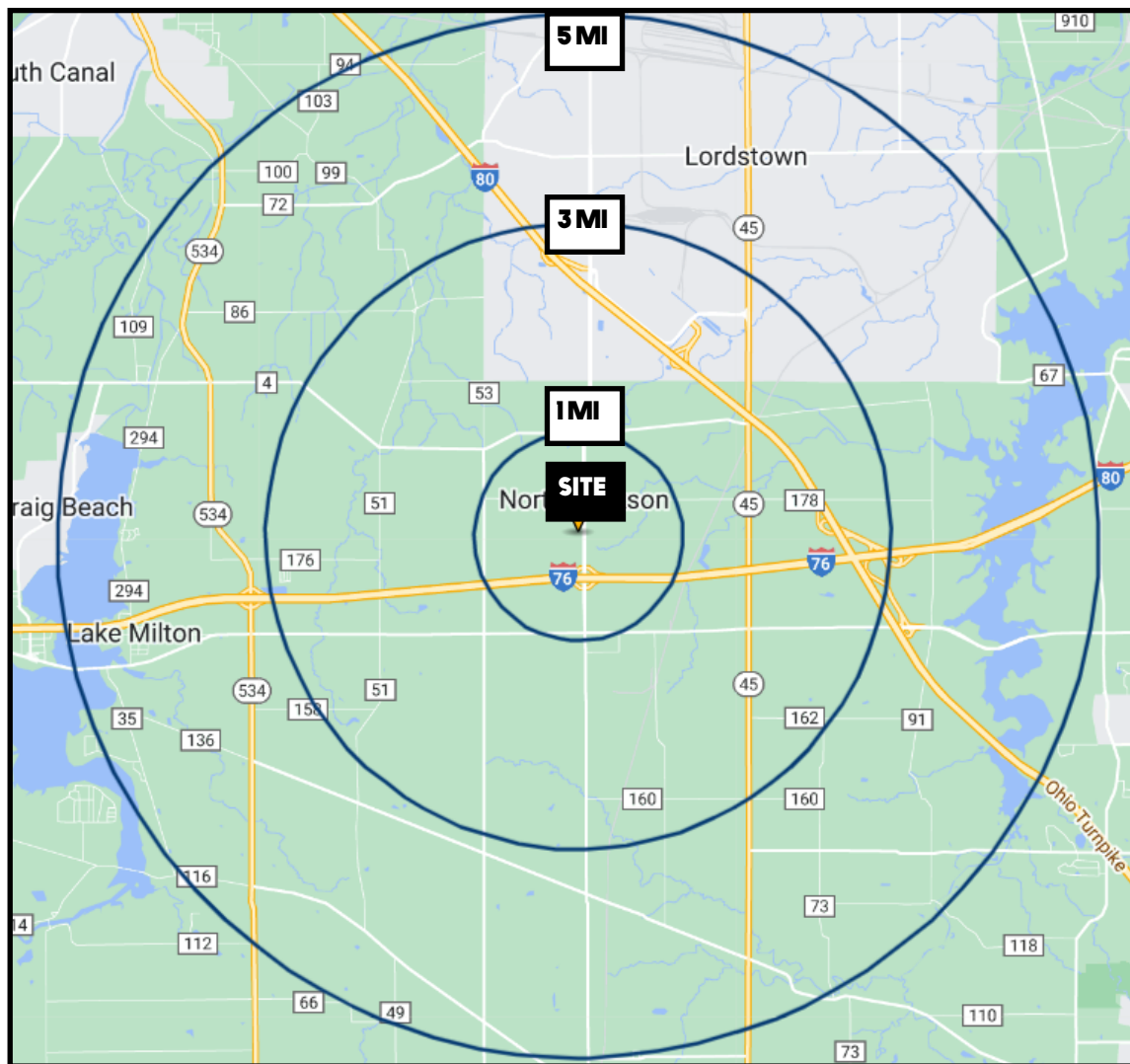
www.PLATZREALTYGROUP.com

The information presented was obtained from sources believed to be true and reliable. The Platz Realty Group makes no warranties or guarantees to the accuracy of the information.



Office: 330.757.4889 | Fax: 330.294.5622 | 3768 Boardman Canfield Rd, Canfield, OH 44406

www.PLATZREALTYGROUP.com



DEMOGRAPHICS	1 MI	3 MI	5 MI
POPULATION	154	2,447	8,379
HOUSEHOLDS	56	961	3,314
MEDIAN AGE	47	48	48
AVERAGE HH INCOME	\$70,483	\$71,430	\$72,388

SITE INFORMATION	
LOCATION	Jackson Township Mahoning County
PARCELS	50-007-0-003 50-007-0-002.05
PROPERTY TYPE	Vacant Land
ZONING	A-SER Agricultural Suburban Estate
WATER	Well and Septic
SIZE	77.67 acres
REAL ESTATE TAXES	\$1,958.16/year
PRICE	\$1,725,000 (\$22,000/acre)

Office: 330.757.4889 | Fax: 330.294.5622 | 3768 Boardman Canfield Rd, Canfield, OH 44406

www.PLATZREALTYGROUP.com