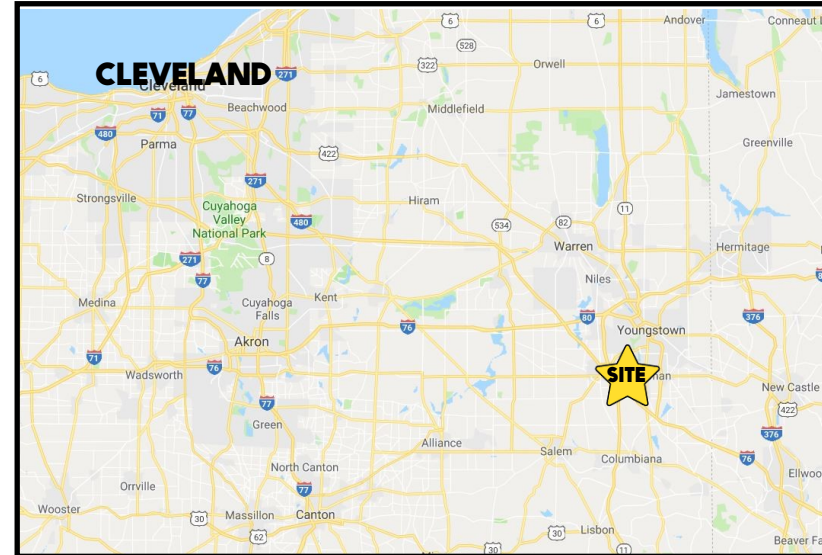


LOCATION

721 Boardman Poland Rd, Boardman, OH 44512



HIGHLIGHTS

- Excellent location on US 224 (Boardman Poland Rd)
- First floor stage area available
- Located next to Shops at Boardman Park
- Corner lot with easy access and ample parking
- Great street signage

TRAFFIC

Boardman Poland Rd = 32,760 VPD

CONTACT

ADAM DIVELBISS

501.551.3817

adivelbiss@platzrealtygroup.com

MATT WILSON

330.347.9677

mwilson@platzrealtygroup.com

Office: 330.757.4889 | Fax: 330.294.5622 | 3768 Boardman Canfield Rd, Canfield, OH 44406

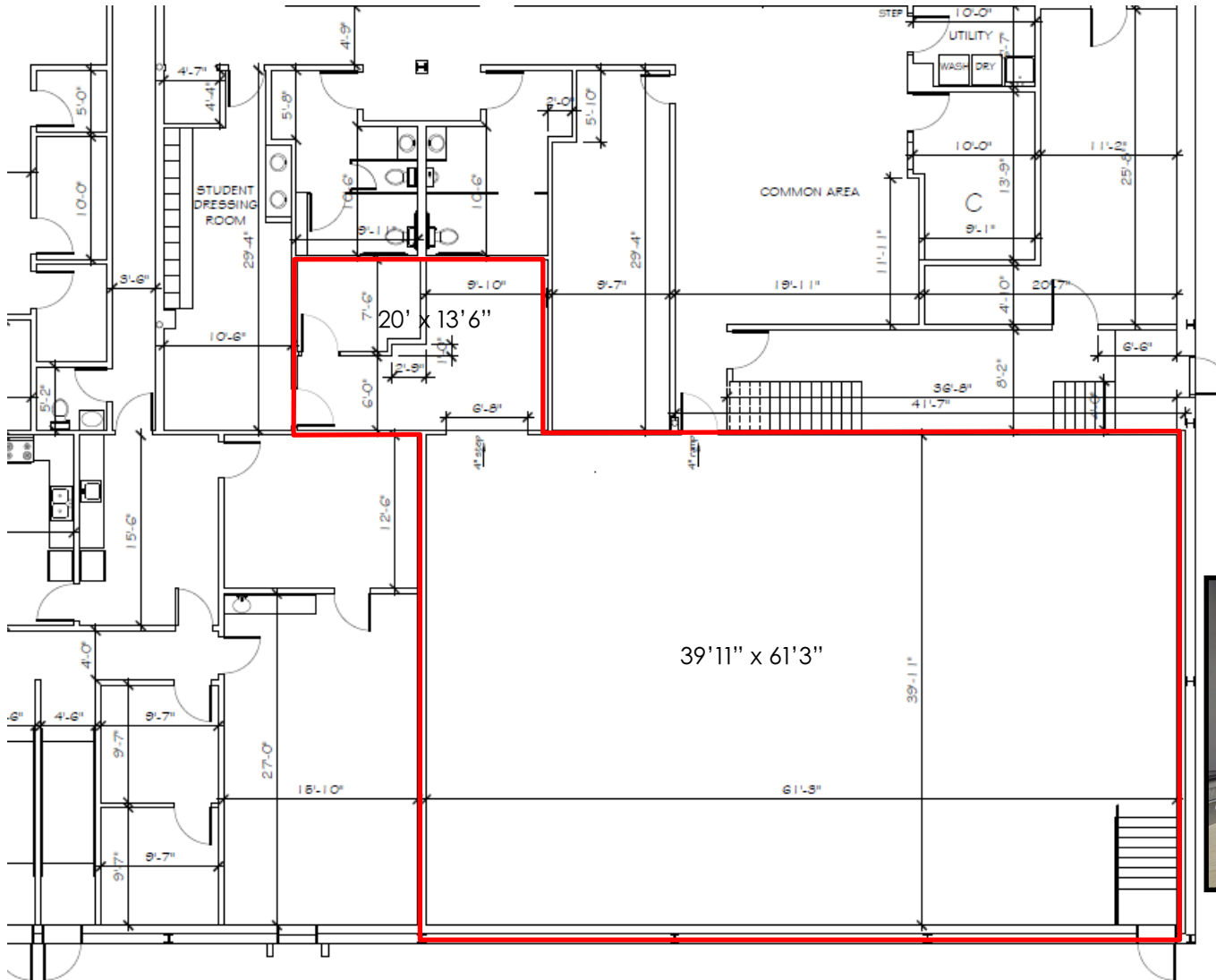
www.PLATZREALTYGROUP.com



Office: 330.757.4889 | Fax: 330.294.5622 | 3768 Boardman Canfield Rd, Canfield, OH 44406

www.PLATZREALTYGROUP.com

The information presented was obtained from sources believed to be true and reliable. The Platz Realty Group makes no warranties or guarantees to the accuracy of the information.



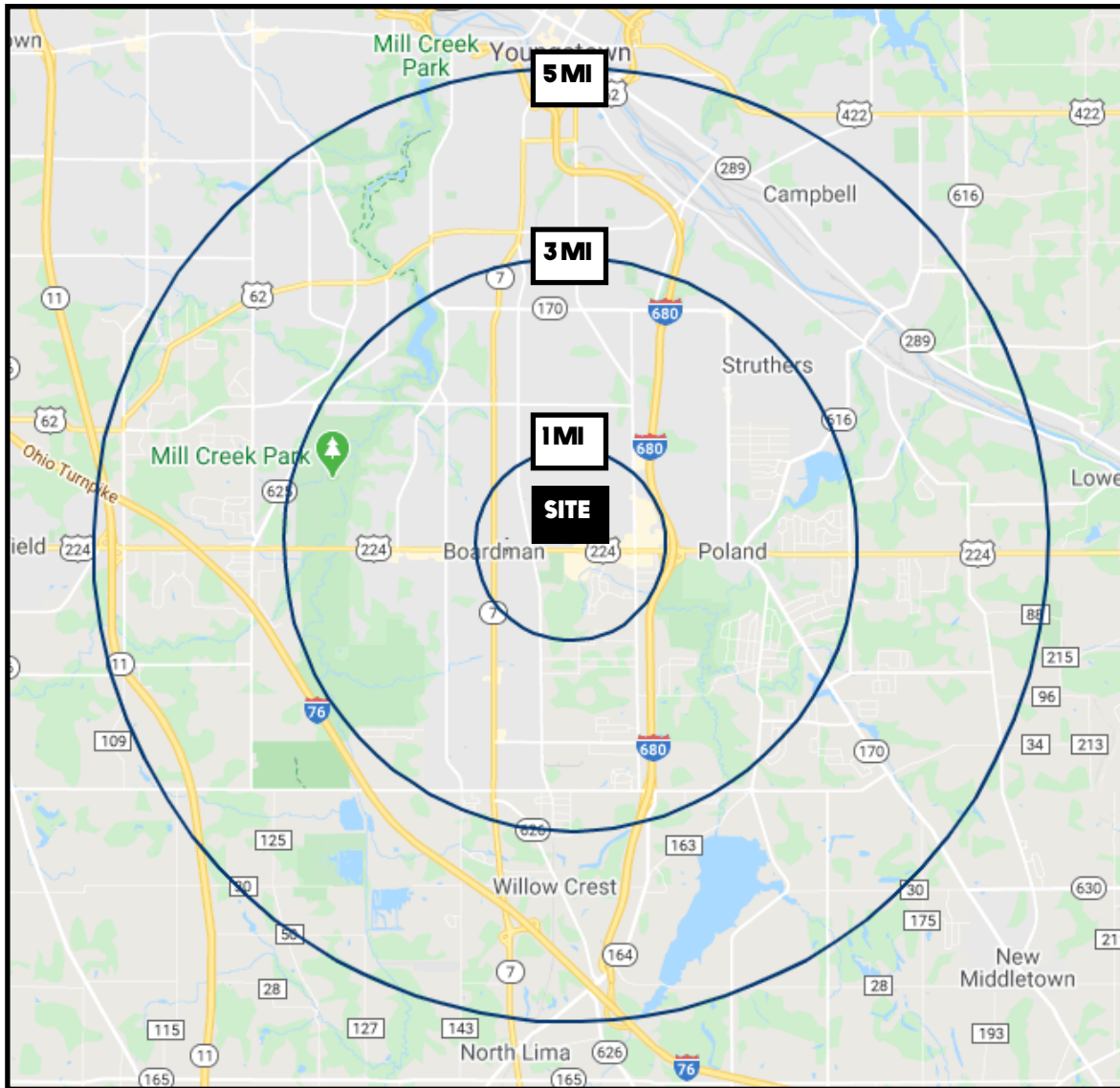
Office: 330.757.4889 | Fax: 330.294.5622 | 3768 Boardman Canfield Rd, Canfield, OH 44406

www.PLATZREALTYGROUP.com



Office: 330.757.4889 | Fax: 330.294.5622 | 3768 Boardman Canfield Rd, Canfield, OH 44406

www.PLATZREALTYGROUP.com



DEMOGRAPHICS	1 MI	3 MI	5 MI
POPULATION	5,004	56,771	112,902
HOUSEHOLDS	2,150	24,497	47,553
MEDIAN AGE	44	43	42
AVERAGE HH INCOME	\$66,603	\$56,264	\$50,718

SITE INFORMATION

LOCATION	Boardman Township Mahoning County
PROPERTY TYPE	Office
SIGNAGE	Monument sign on US 224
ZONING	Business
AVAILABLE	First Floor Stage: 2,715 SF; \$6.00/SF NNN
NNN CHARGES	\$4.00/SF

Office: 330.757.4889 | Fax: 330.294.5622 | 3768 Boardman Canfield Rd, Canfield, OH 44406