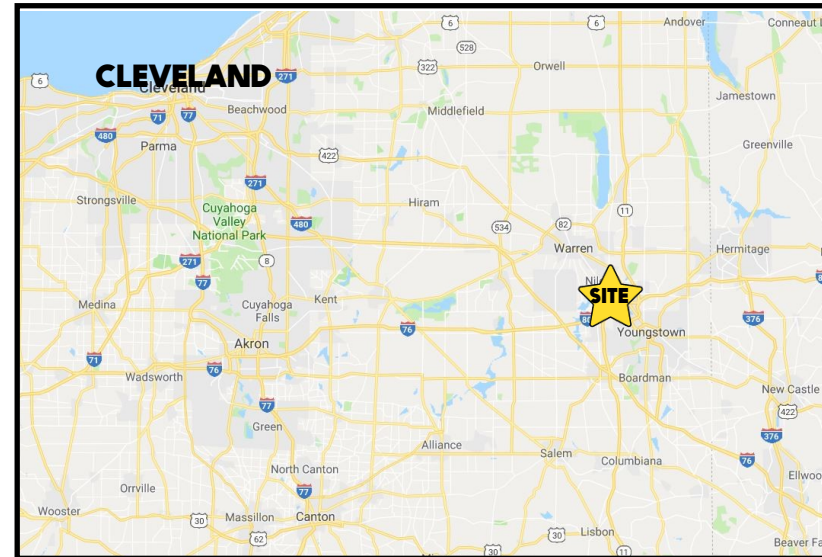


## LOCATION

Salt Springs Rd, Girard, OH 44420



## HIGHLIGHTS

- 10.5 acres - can be subdivided
- Corner lot at a signalized intersection
- Just 500' off Rte 80
- Next to Shell, Dunkin, & McDonalds, across from Sheetz
- Owner will sell, lease, or build to suit

## TRAFFIC

Salt Springs Rd = 7,919 VPD  
RT 80 = 52,886 VPD

## CONTACT

**DAN CROUSE**

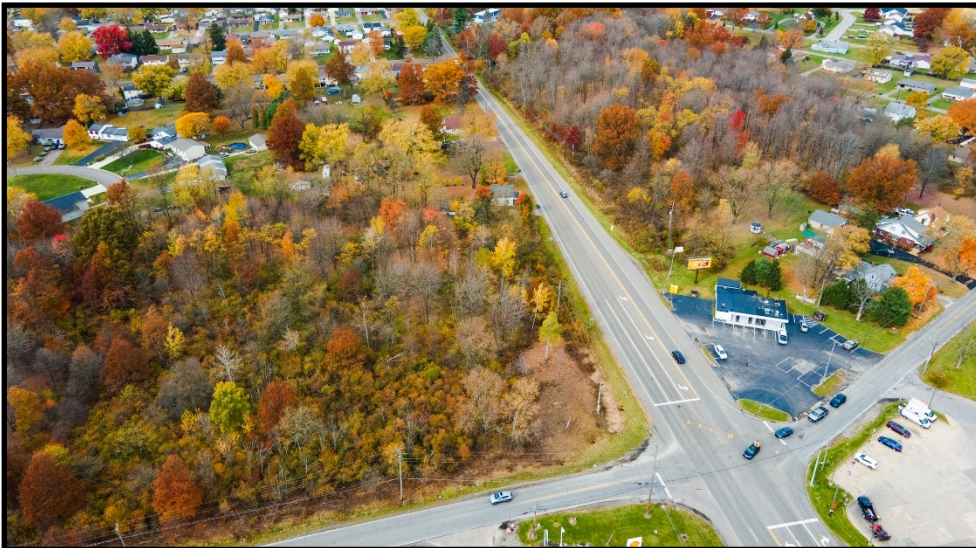
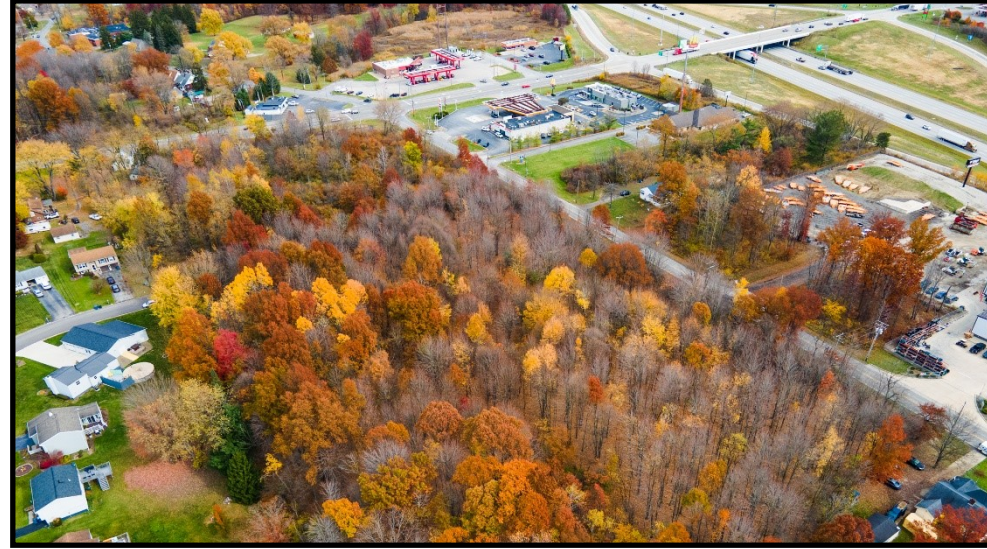
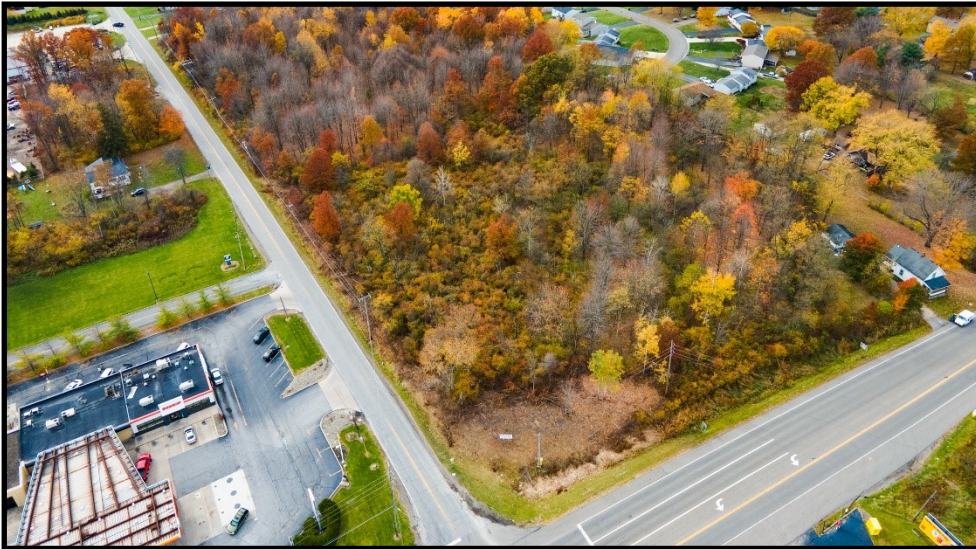
330.647.0411

dan@themahoningvalley.com

Office: 330.757.4889 | Fax: 330.294.5622 | 3768 Boardman Canfield Rd, Canfield, OH 44406

[www.PLATZREALTYGROUP.com](http://www.PLATZREALTYGROUP.com)





Office: 330.757.4889 | Fax: 330.294.5622 | 3768 Boardman Canfield Rd, Canfield, OH 44406

**[www.PLATZREALTYGROUP.com](http://www.PLATZREALTYGROUP.com)**

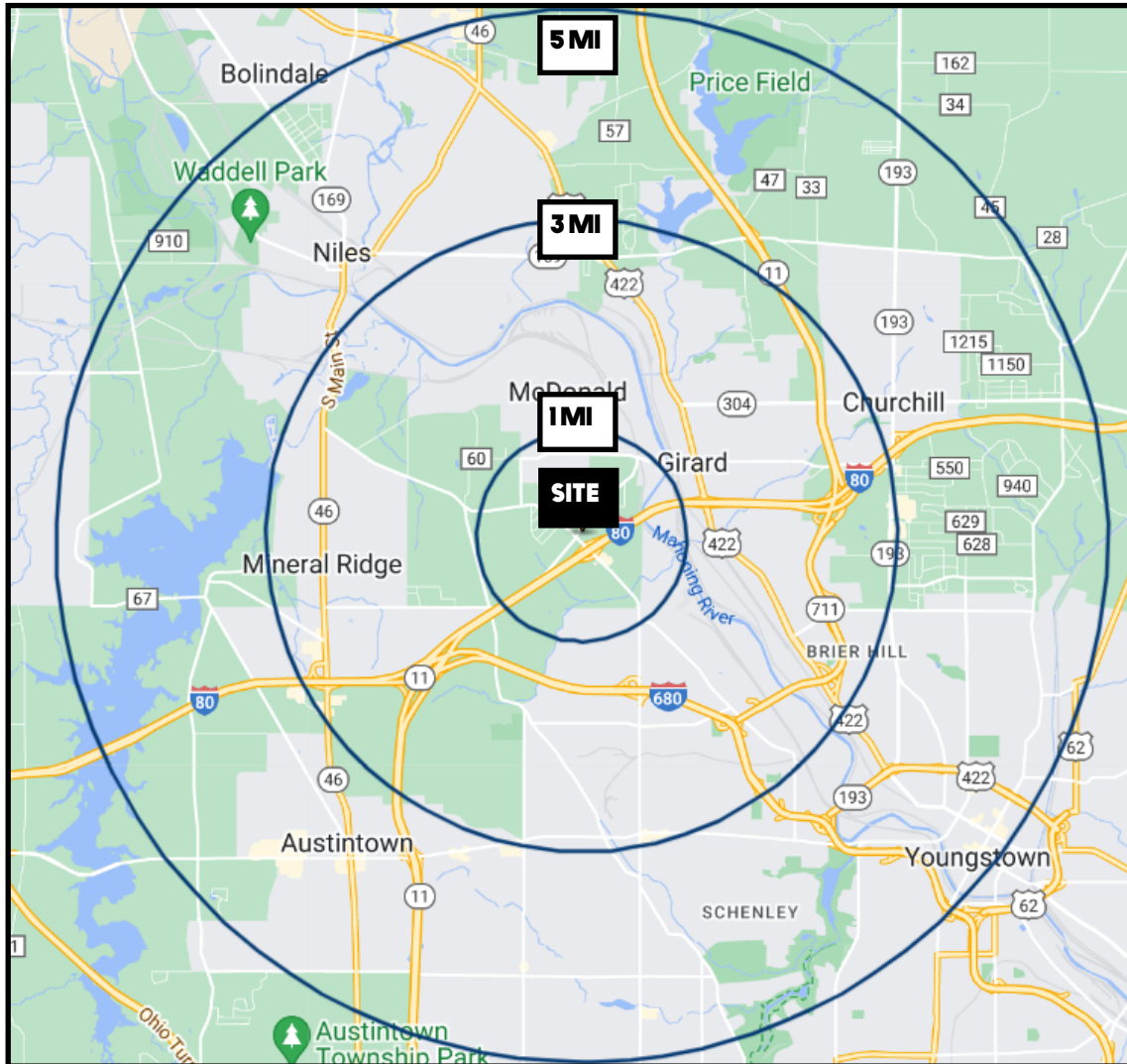
The information presented was obtained from sources believed to be true and reliable. The Platz Realty Group makes no warranties or guarantees to the accuracy of the information.





Office: 330.757.4889 | Fax: 330.294.5622 | 3768 Boardman Canfield Rd, Canfield, OH 44406

[www.PLATZREALTYGROUP.com](http://www.PLATZREALTYGROUP.com)



DEMOGRAPHICS	1 MI	3 MI	5 MI
<b>POPULATION</b>	2,199	34,095	102,640
<b>HOUSEHOLDS</b>	845	14,341	43,307
<b>MEDIAN AGE</b>	45	43	43
<b>AVERAGE HH INCOME</b>	\$63,576	\$53,651	\$55,799

**SITE INFORMATION**

<b>LOCATION</b>	Weathersfield Township Trumbull County
<b>PARCELS</b>	22-079320 + 22-080010
<b>PROPERTY TYPE</b>	Vacant Land
<b>ZONING</b>	Commercial
<b>UTILITIES</b>	All utilities
<b>SIZE</b>	10.5 acres
<b>REAL ESTATE TAXES</b>	\$4,600/year
<b>PRICE</b>	Call for pricing

Office: 330.757.4889 | Fax: 330.294.5622 | 3768 Boardman Canfield Rd, Canfield, OH 44406