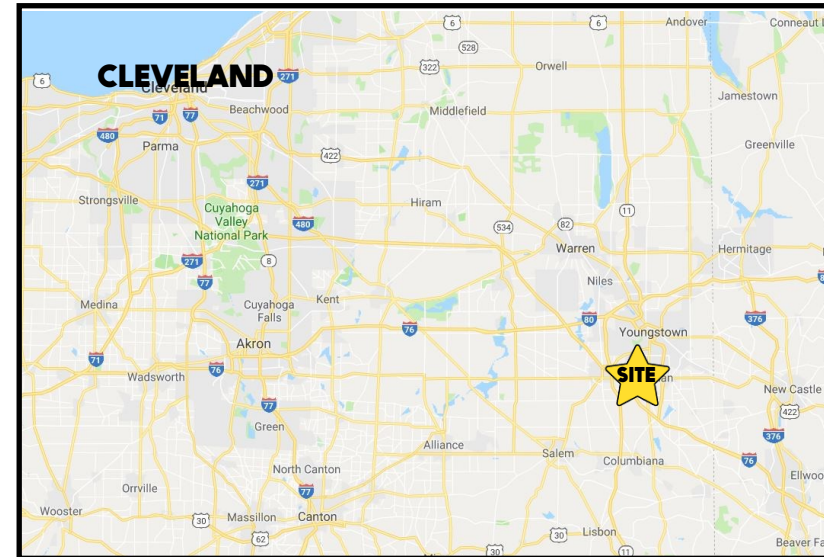


## LOCATION

1280 Boardman Canfield Rd, Boardman, OH 44512



## TRAFFIC

Boardman Canfield Rd = 33,649 VPD

**3D TOUR:** <https://bit.ly/3Vj5tFD>

## HIGHLIGHTS

- Office space on US 224 with street signage
- A few hundred feet from new Meijer
- Easy access to SR 11
- Medical unit available with rear/side access (1,860 SF); this unit has a private restroom

## CONTACT

### ADAM DIVELBISS

501.551.3817

[adivelbiss@platzrealtygroup.com](mailto:adivelbiss@platzrealtygroup.com)

### MATT WILSON

330.347.9677

[mwilson@platzrealtygroup.com](mailto:mwilson@platzrealtygroup.com)

Office: 330.757.4889 | Fax: 330.294.5622 | 3830 Starr Centre Dr, Suite 2, Canfield, OH 44406

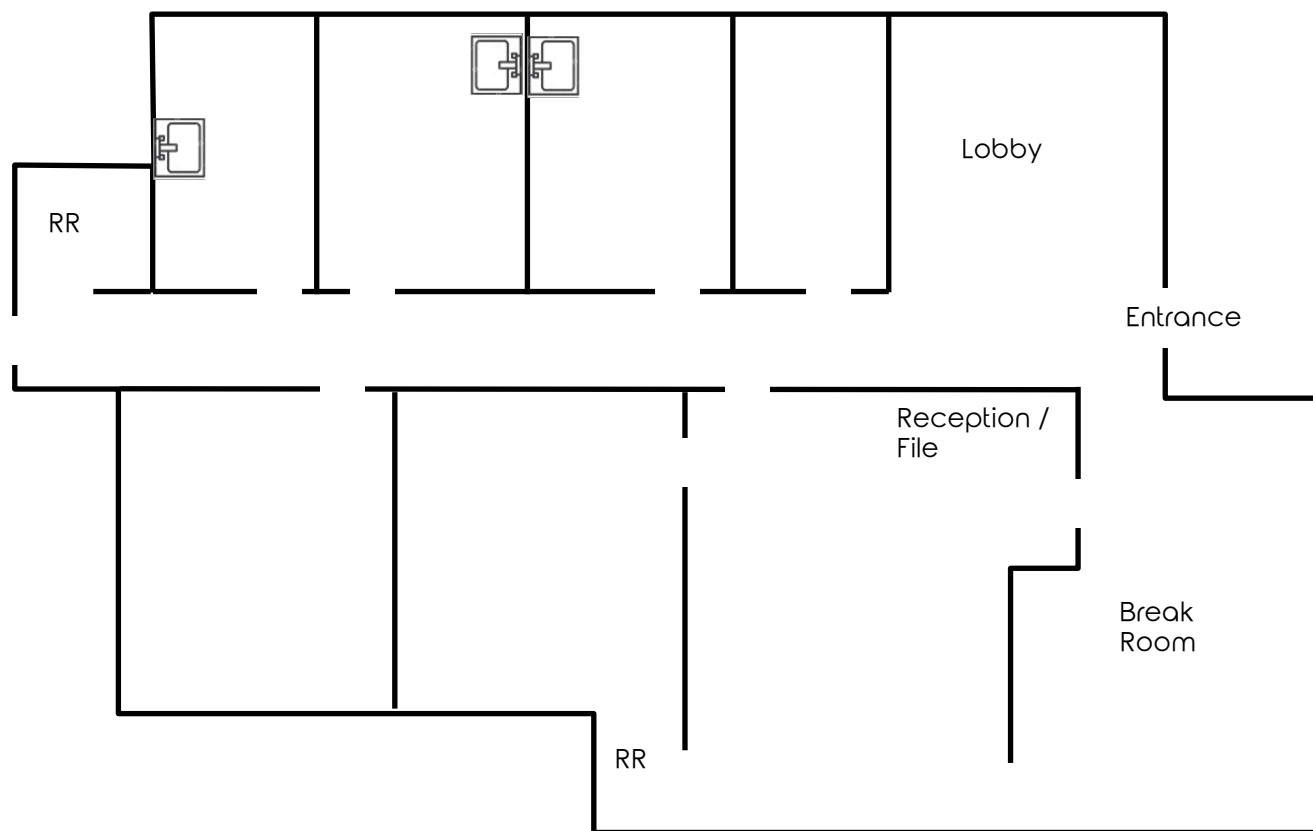
[www.PLATZREALTYGROUP.com](http://www.PLATZREALTYGROUP.com)





Office: 330.757.4889 | Fax: 330.294.5622 | 3830 Starr Centre Dr, Suite 2, Canfield, OH 44406

**[www.PLATZREALTYGROUP.com](http://www.PLATZREALTYGROUP.com)**



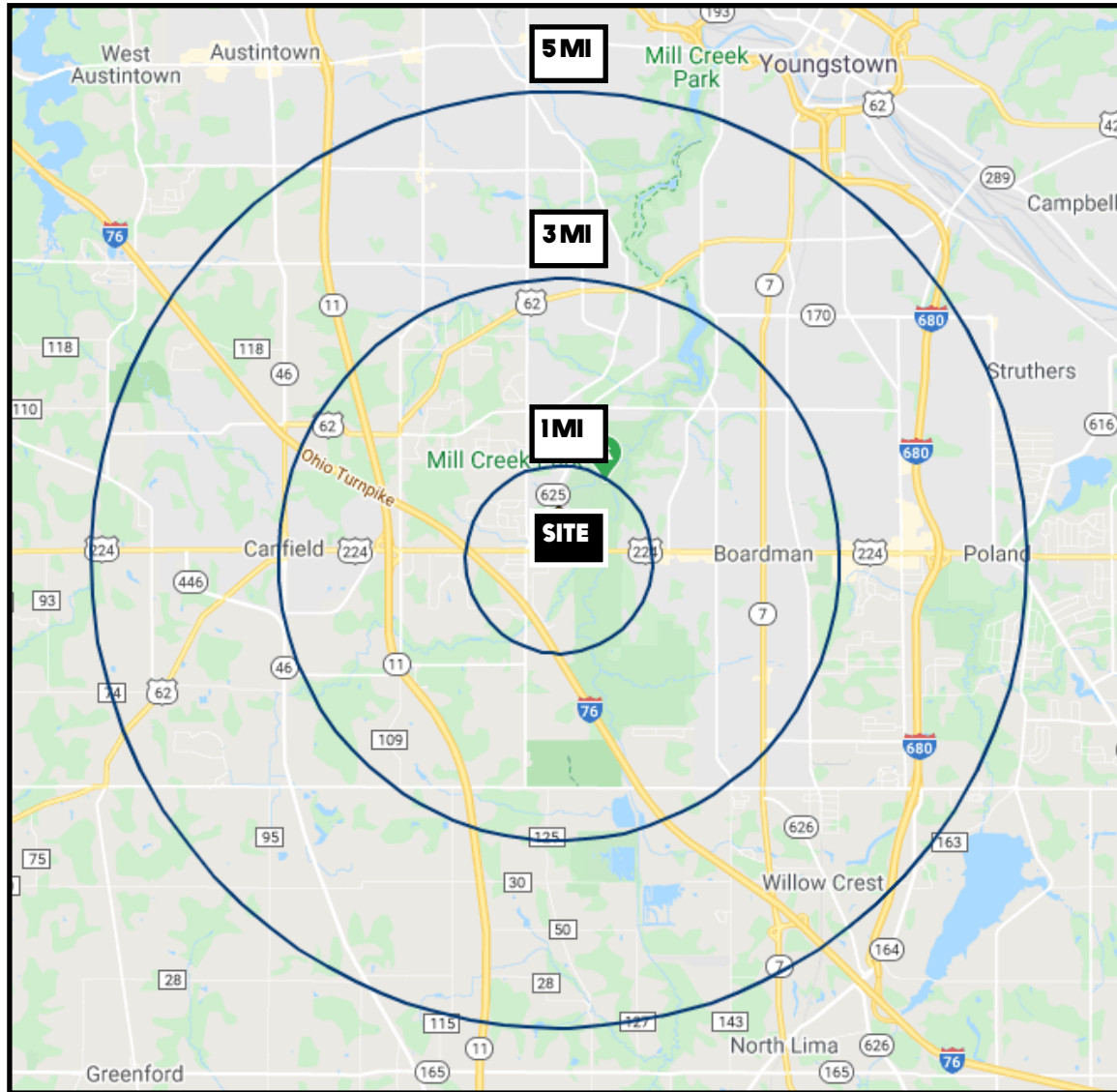
Office: 330.757.4889 | Fax: 330.294.5622 | 3768 Boardman Canfield Rd, Canfield, OH 44406

[www.PLATZREALTYGROUP.com](http://www.PLATZREALTYGROUP.com)









DEMOGRAPHICS	1 MI	3 MI	5 MI
<b>POPULATION</b>	5,268	37,839	102,641
<b>HOUSEHOLDS</b>	2,306	16,541	43,908
<b>AVERAGE AGE</b>	43	43	43
<b>MEDIAN HH INCOME</b>	\$76,294	\$65,267	\$53,844

**SITE INFORMATION**

<b>LOCATION</b>	Boardman Township Mahoning County
<b>PROPERTY TYPE</b>	Office / Medical
<b>SIGNAGE</b>	Building and pylon
<b>PARKING</b>	Front and rear parking
<b>AVAILABLE</b>	Rear/Side Medical: 1,860 SF \$11.00/SF NNN + \$4.00/SF  Private Entrance and private restroom

Office: 330.757.4889 | Fax: 330.294.5622 | 3830 Starr Centre Dr, Suite 2, Canfield, OH 44406