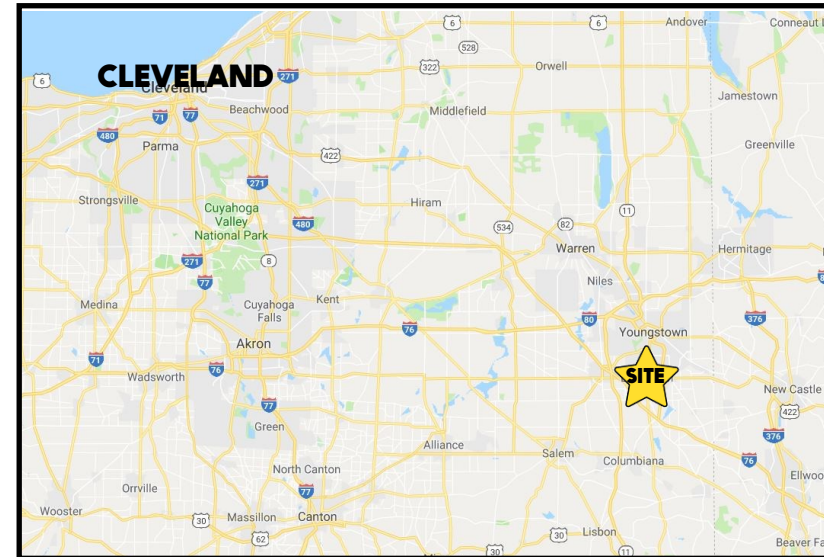


LOCATION

755 Boardman Canfield Rd, K3, Boardman, OH 44512



HIGHLIGHTS

- Second floor space
- Private offices plus large open space
- Plenty of natural light
- Professional setting in Southbridge Executive Park
- Ample parking

TRAFFIC

Boardman Canfield Rd = 34,327 VPD

CONTACT

ADAM DIVELBISS

501.551.3817

adivelbiss@platzrealtygroup.com

MATT WILSON

330.347.9677

mwilson@platzrealtygroup.com

Office: 330.757.4889 | Fax: 330.294.5622 | 3830 Starr Centre Dr, Suite 2, Canfield, OH 44406

www.PLATZREALTYGROUP.com



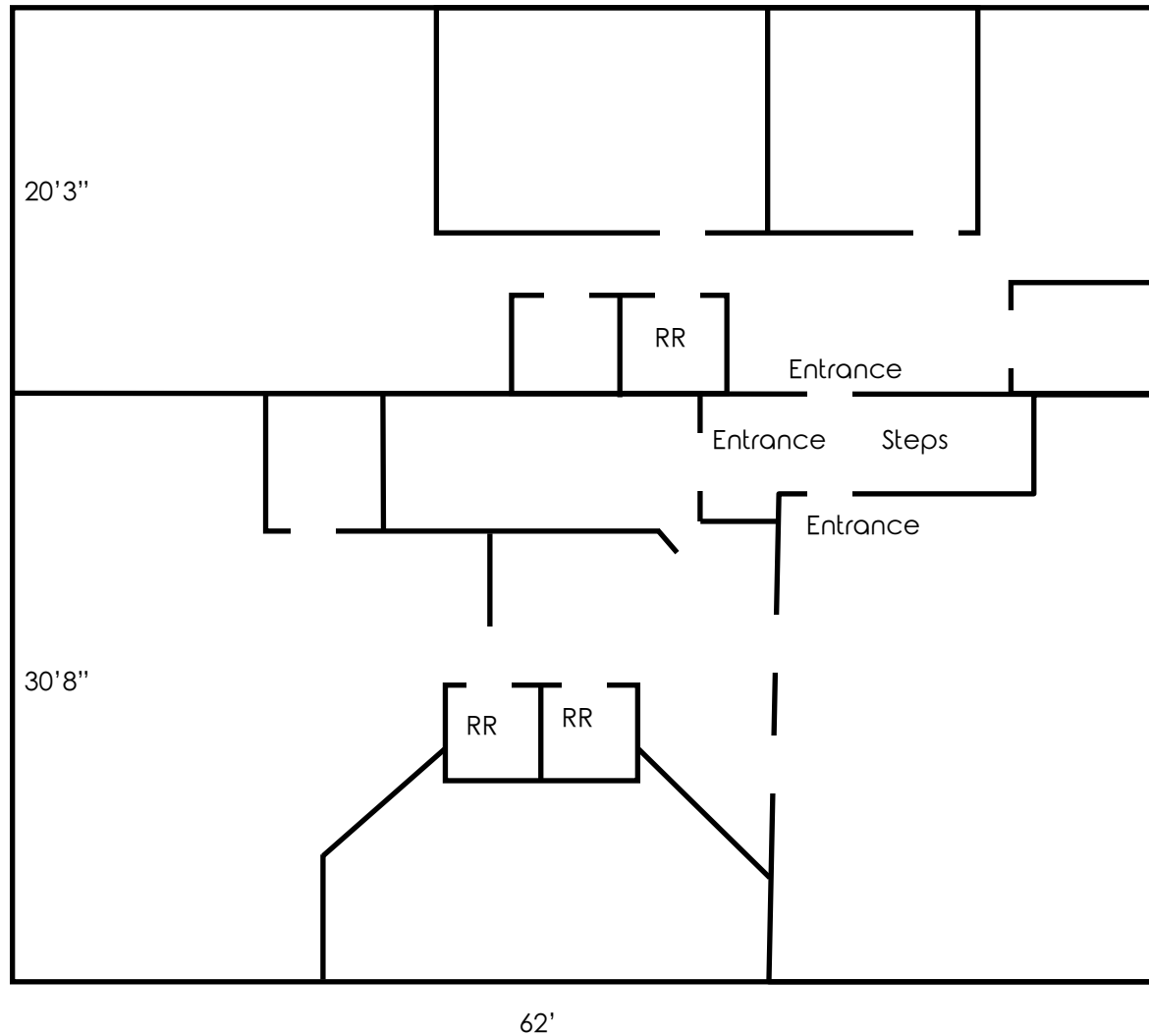
Office: 330.757.4889 | Fax: 330.294.5622 | 3830 Starr Centre Dr, Suite 2, Canfield, OH 44406

www.PLATZREALTYGROUP.com

Second Floor

K3: Available

K4: LEASED



Office: 330.757.4889 | Fax: 330.294.5622 | 3830 Starr Centre Dr, Suite 2, Canfield, OH 44406

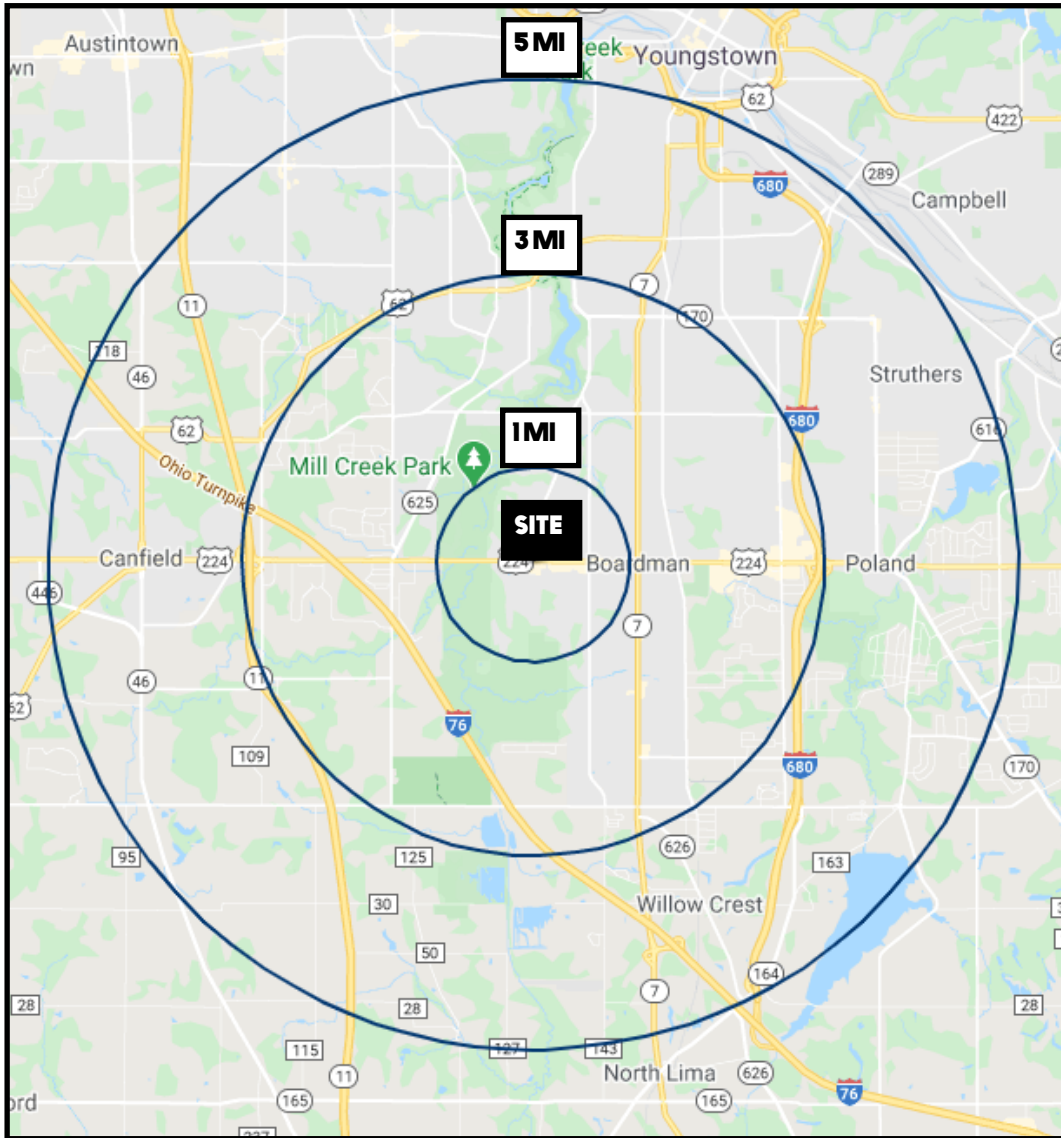
www.PLATZREALTYGROUP.com



Office: 330.757.4889 | Fax: 330.294.5622 | 3830 Starr Centre Dr, Suite 2, Canfield, OH 44406

www.PLATZREALTYGROUP.com

The information presented was obtained from sources believed to be true and reliable. The Platz Realty Group makes no warranties or guarantees to the accuracy of the information.



DEMOGRAPHICS	1 MI	3 MI	5 MI
POPULATION	6,648	46,146	116,056
HOUSEHOLDS	3,047	20,087	49,428
MEDIAN AGE	45	44	44
AVERAGE HH INCOME	\$75,357	\$77,128	\$69,124

SITE INFORMATION

LOCATION	Boardman Township Mahoning County
PROPERTY TYPE	Office
SIZE	Second Floor K3: 1,255 SF
YEAR BUILT	1989
PARKING	Ample shared parking
SIGNAGE	Building and door
RENT	K3: 1,255 SF: \$1,100 /month + utilities

Office: 330.757.4889 | Fax: 330.294.5622 | 3830 Starr Centre Dr, Suite 2, Canfield, OH 44406