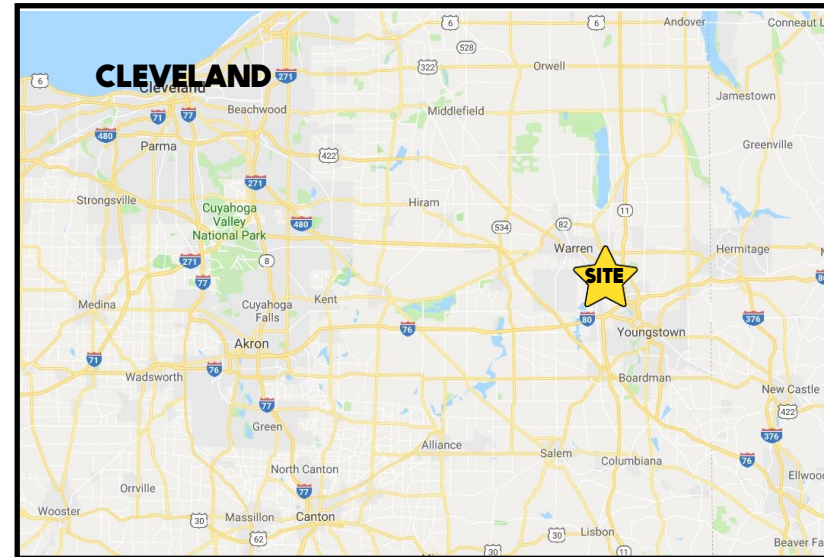
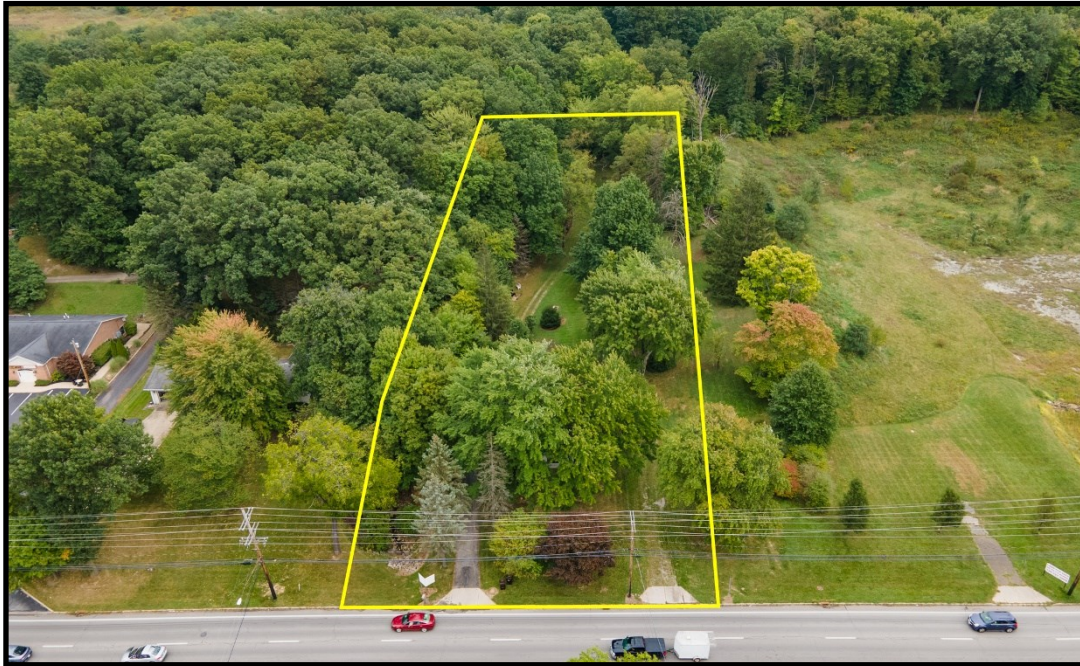


LOCATION

1723-1749 Niles Cortland Rd, Howland, OH 44484



HIGHLIGHTS

- Located on SR 46 by Eastwood Mall Complex
- Approximately 150' frontage
- 1.8 acres
- Less than 1 mile from Route 82
- Excellent visibility with high traffic counts

TRAFFIC

Niles Cortland Rd = 29,279 VPD

CONTACT

BILL KUTLICK

330.565.5701

bkutlick@platzrealtygroup.com

DAN CROUSE

330.647.0411

dan@themahoningvalley.com

Office: 330.757.4889 | Fax: 330.294.5622 | 3830 Starr Centre Dr, Suite 2, Canfield, OH 44406

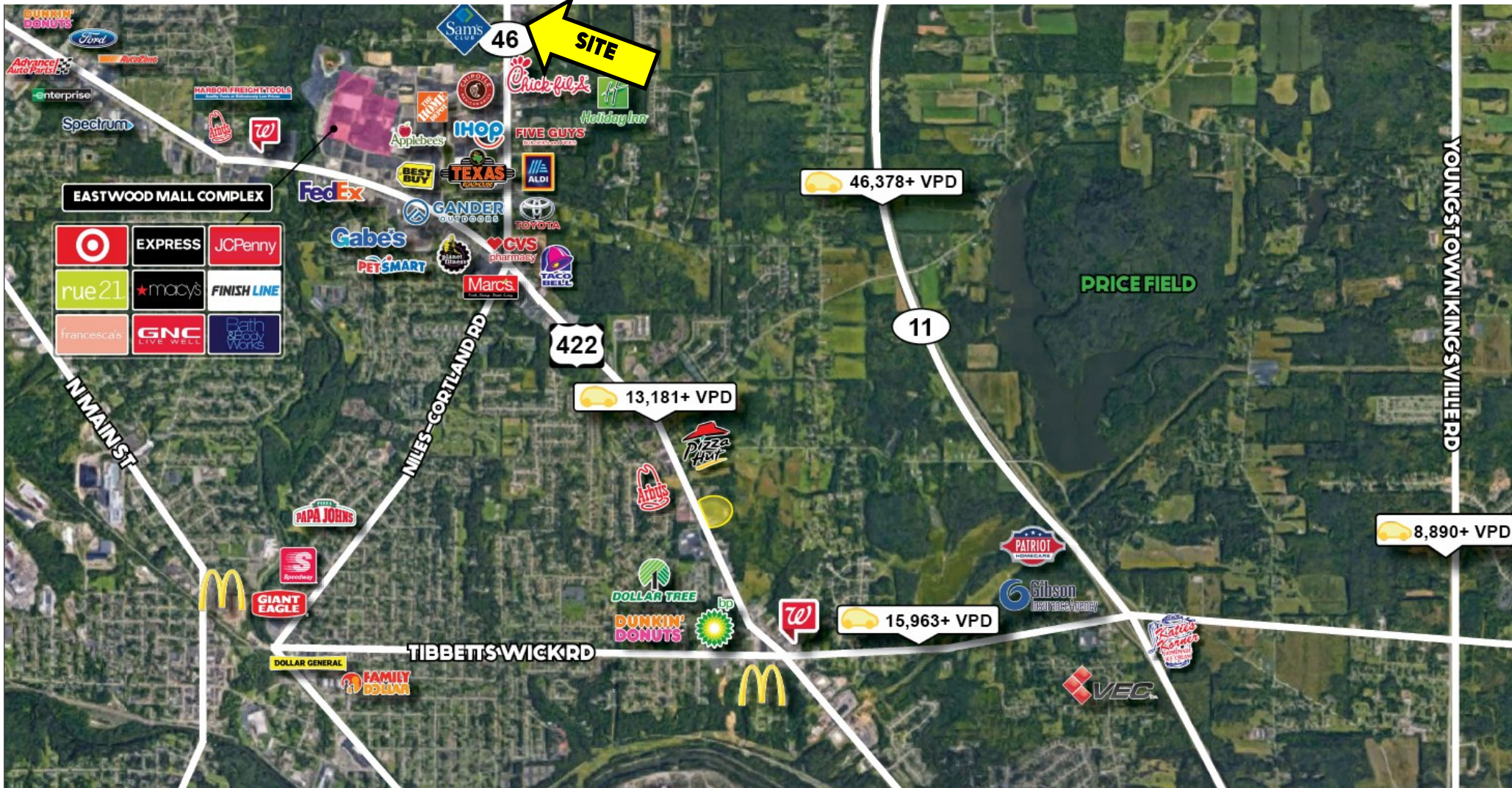
www.PLATZREALTYGROUP.com



Office: 330.757.4889 | Fax: 330.294.5622 | 3830 Starr Centre Dr, Suite 2, Canfield, OH 44406

www.PLATZREALTYGROUP.com

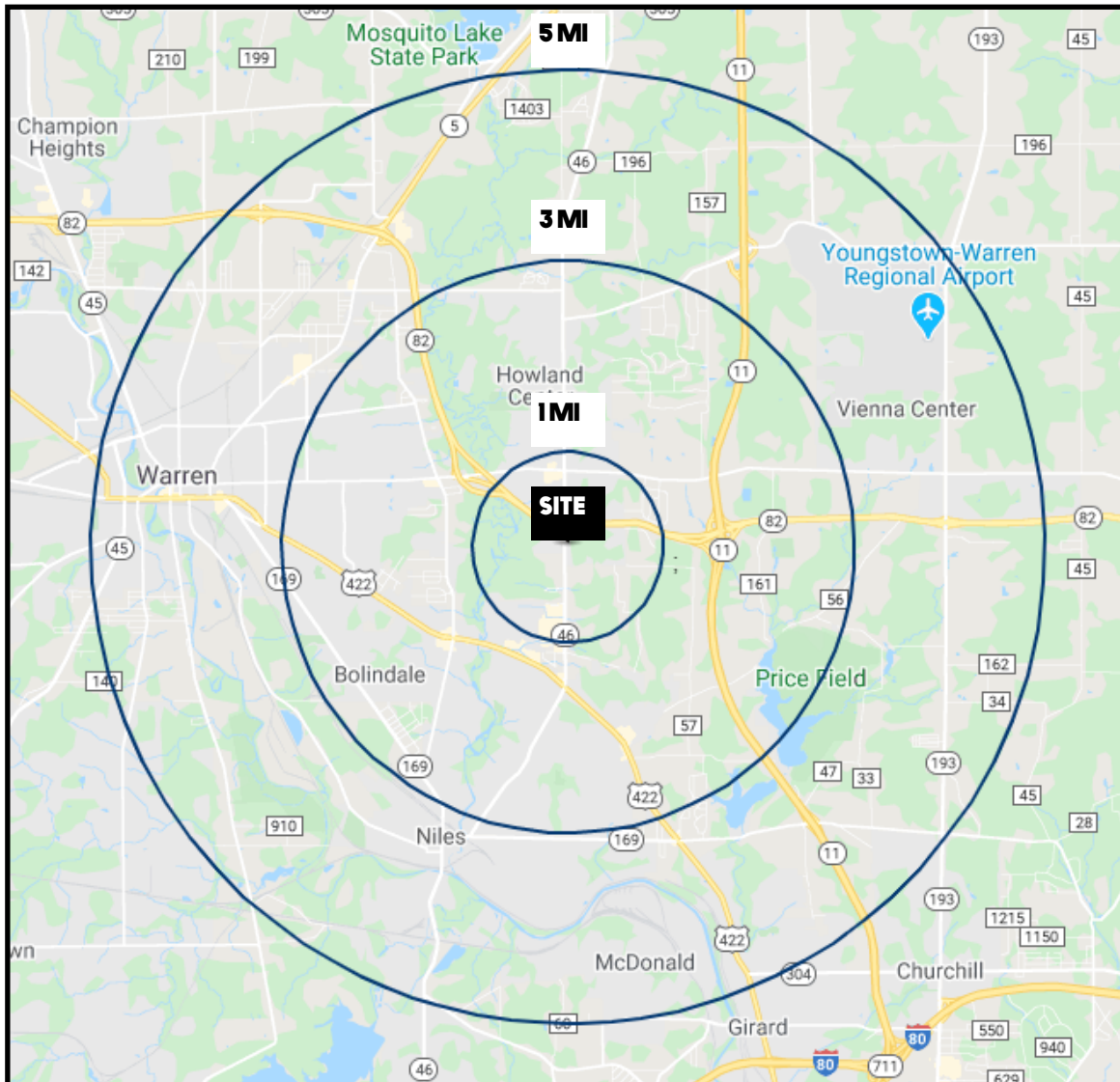
The information presented was obtained from sources believed to be true and reliable. The Platz Realty Group makes no warranties or guarantees to the accuracy of the information.



Office: 330.757.4889 | Fax: 330.294.5622 | 3830 Starr Centre Dr, Suite 2, Canfield, OH 44406

www.PLATZREALTYGROUP.com

The information presented was obtained from sources believed to be true and reliable. The Platz Realty Group makes no warranties or guarantees to the accuracy of the information.



DEMOGRAPHICS	1 MI	3 MI	5 MI
POPULATION	2,675	37,694	78,932
HOUSEHOLDS	1,095	16,571	33,719
AVERAGE AGE	46	44	43
MEDIAN HH INCOME	\$77,607	\$51,673	41,589

SITE INFORMATION	
LOCATION	Howland Township Trumbull County
PROPERTY TYPE	Land
UTILITIES	All utilities
PARCELS	28-401300 + 28-603200
ZONING	CRD-2
ACREAGE	1.78 acres; Approximately 150' frontage
REAL ESTATE TAXES	\$7,382/year
PRICE	\$750,000

Office: 330.757.4889 | Fax: 330.294.5622 | 3830 Starr Centre Dr, Suite 2, Canfield, OH 44406

www.PLATZREALTYGROUP.com