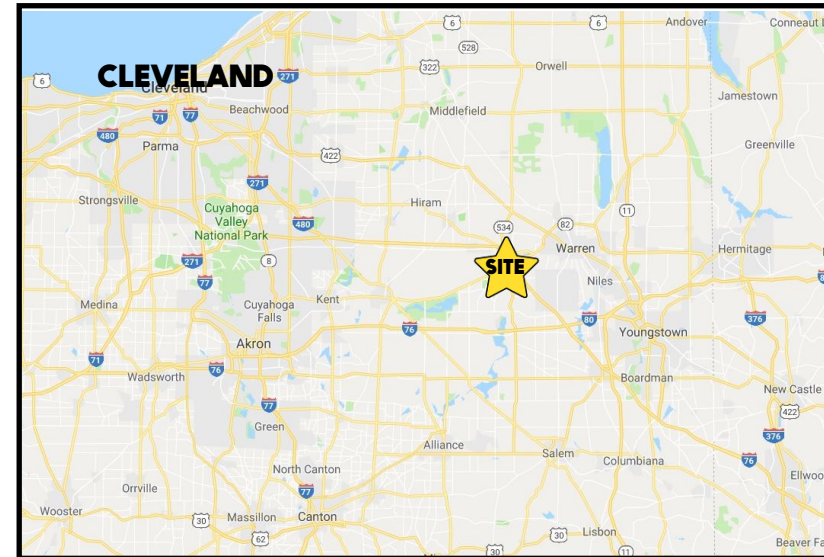


LOCATION

400 Boardman Poland Rd, Boardman, OH 44512



HIGHLIGHTS

- Convenient location on US 224
- Across from Shops at Boardman Park / Target, Kohls, BN
- Co-tenants include Italian Village, Plato's Closet, & Charm House, & Gorant's; Next to Raising Cane's Chicken
- Conveniently located between Canfield and Poland with easy access to SR 7 and I-680

TRAFFIC

Boardman Poland Rd = 32,730 VPD

CONTACT

MATT WILSON

330.347.9677 mwilson@platzrealtygroup.com

BOB MCGOVERN

330.501.6500 bmcgovern@platzrealtygroup.com

Office: 330.757.4889 | Fax: 330.294.5622 | 3830 Starr Centre Dr, Suite 2, Canfield, OH 44406

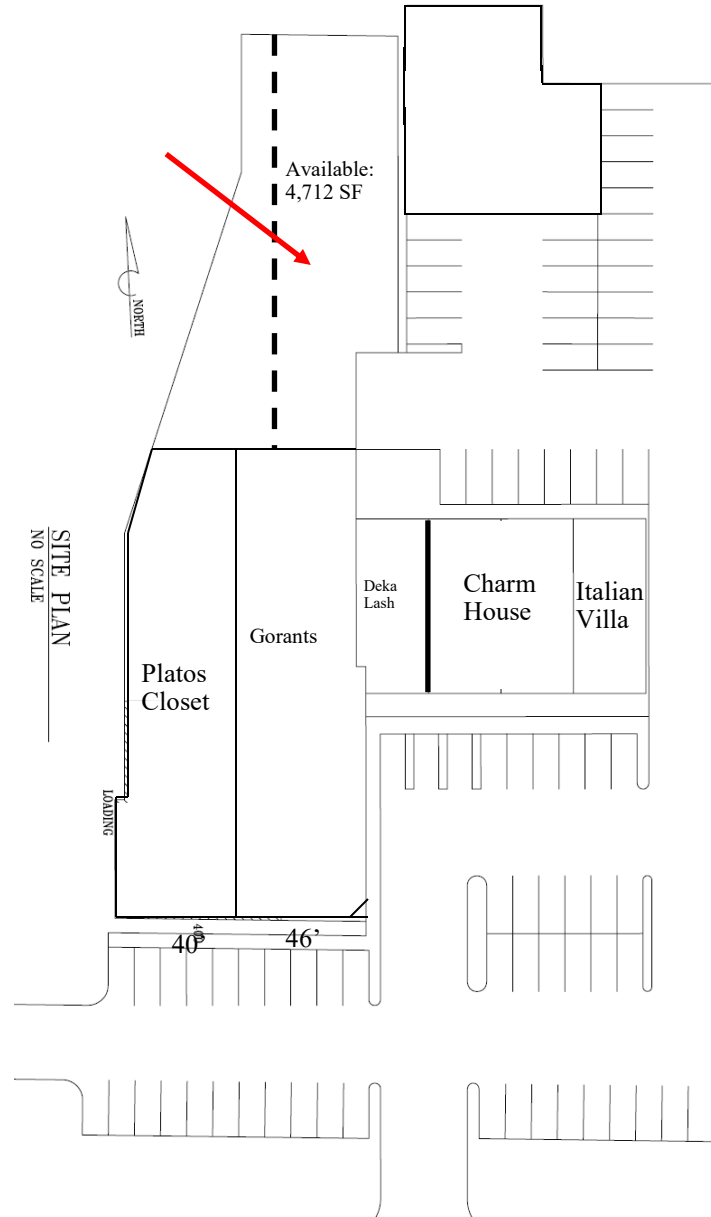
www.PLATZREALTYGROUP.com



Office: 330.757.4889 | Fax: 330.294.5622 | 3830 Starr Centre Dr, Suite 2, Canfield, OH 44406

www.PLATZREALTYGROUP.com

400 Boardman Poland Rd
Boardman, OH 44512



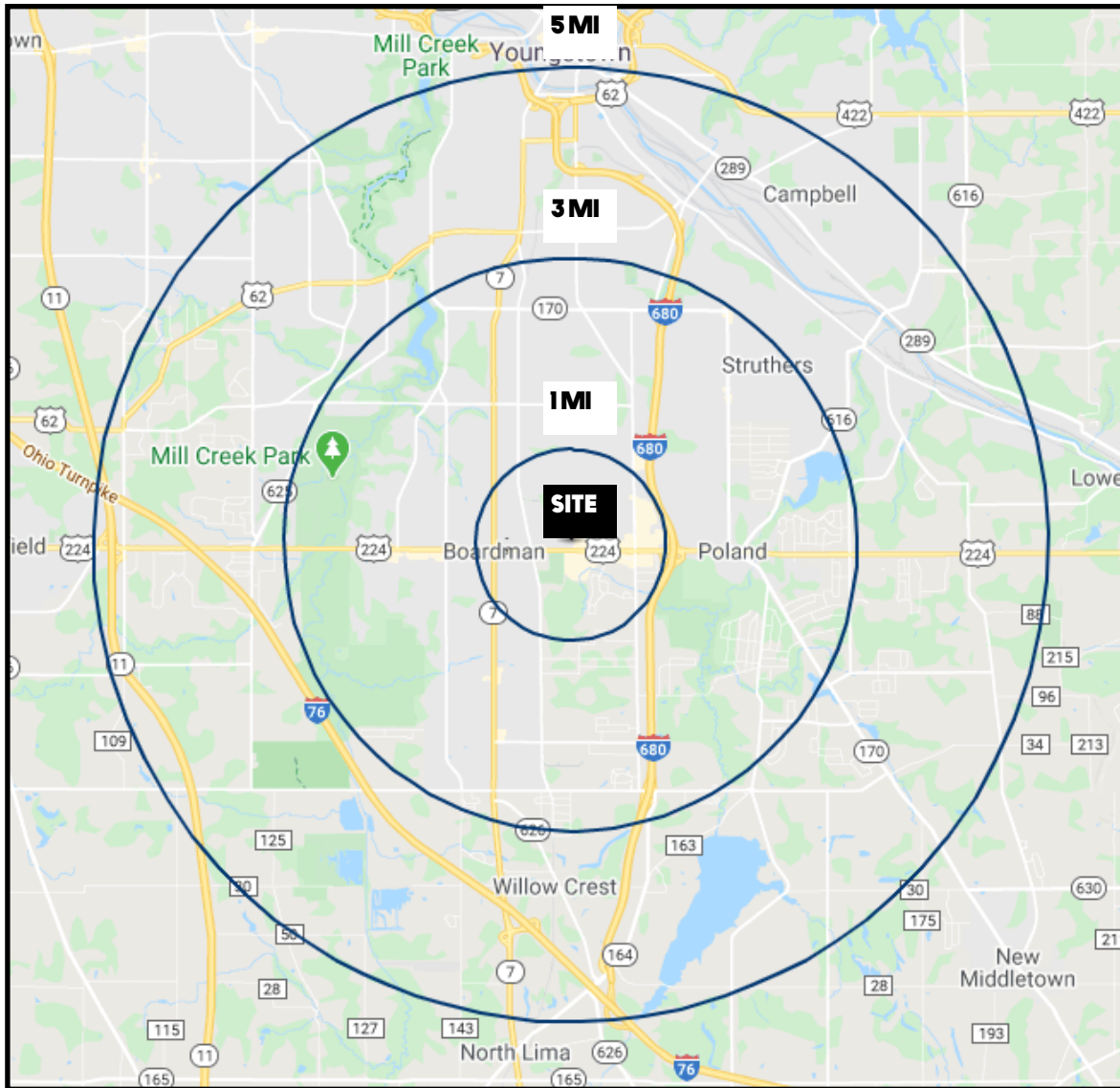
Office: 330.757.4889 | Fax: 330.294.5622 | 3830 Starr Centre Dr, Suite 2, Canfield, OH 44406

www.PLATZREALTYGROUP.com



Office: 330.757.4889 | Fax: 330.294.5622 | 3830 Starr Centre Dr, Suite 2, Canfield, OH 44406

www.PLATZREALTYGROUP.com



DEMOGRAPHICS	1 MI	3 MI	5 MI
POPULATION	5,004	56,771	112,902
HOUSEHOLDS	2,150	24,497	47,553
AVERAGE AGE	44	43	42
MEDIAN HH INCOME	\$66,603	\$56,264	\$50,718

SITE INFORMATION

LOCATION	Boardman Township Mahoning County
PROPERTY TYPE	Front: Retail Rear: Flex /Warehouse
ZONING	Commercial / Regional Business
AVAILABLE	Warehouse: 4,712 SF
PARKING	Rear parking available
RENT	Base Rent: \$5.50/SF NNN "Extra Charges": \$3.00/SF Plus utilities

Office: 330.757.4889 | Fax: 330.294.5622 | 3830 Starr Centre Dr, Suite 2, Canfield, OH 44406