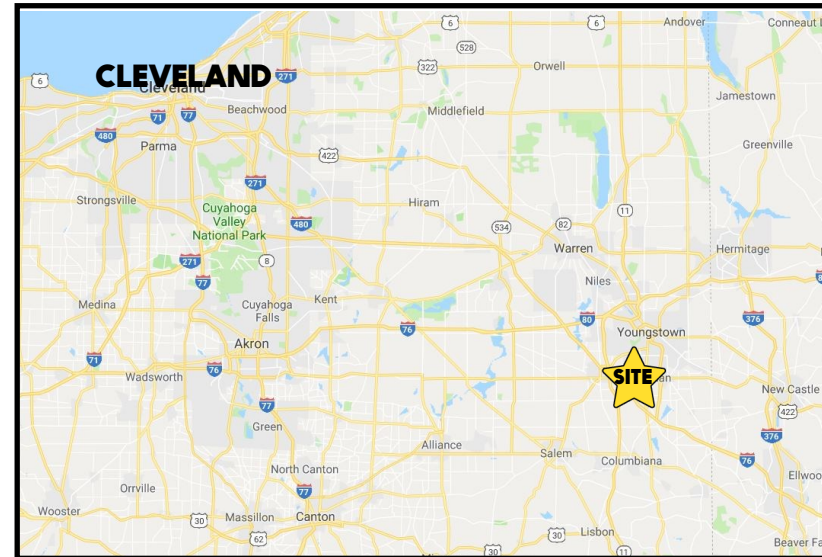


LOCATION

1285 Boardman Canfield Rd, Boardman, OH 44512



HIGHLIGHTS

- Multi tenant building
- Recently updated
- Located in the heart of Boardman/Canfield retail and restaurant district; across from Meijer
- Lots of parking available

TRAFFIC

Boardman Canfield Rd = 33,649

CONTACT

GARY LASKO

330.509.4546

glasko@platzrealtygroup.com

MATT WILSON

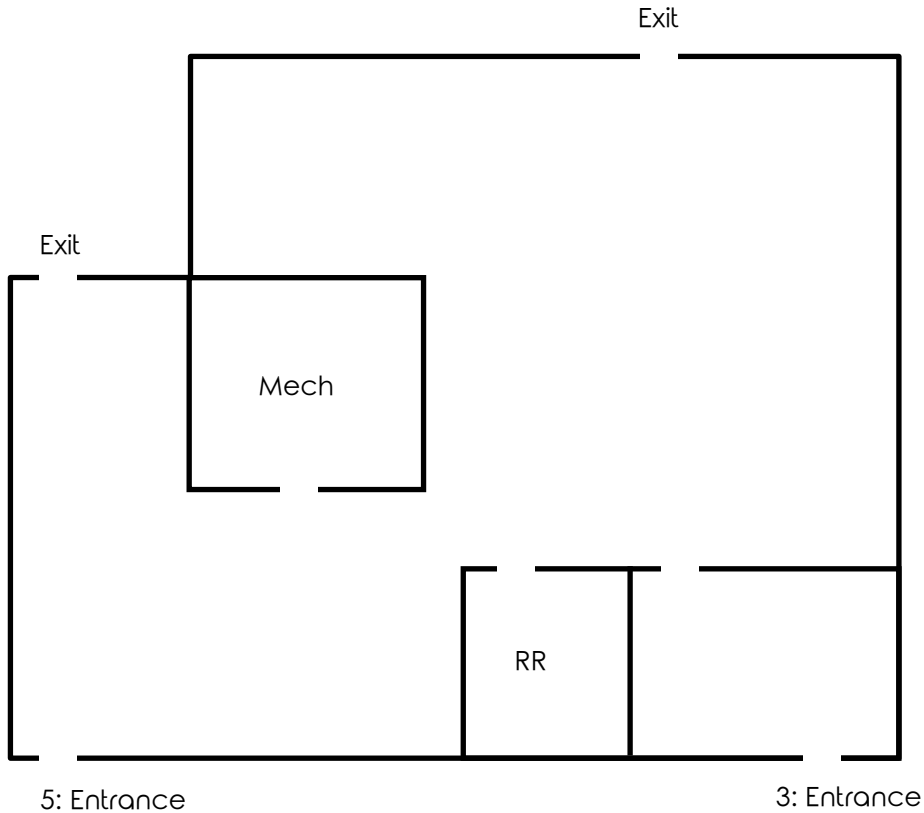
330.347.9677

mwilson@platzrealtygroup.com

Office: 330.757.4889 | Fax: 330.294.5622 | 3830 Starr Centre Dr, Suite 2, Canfield, OH 44406

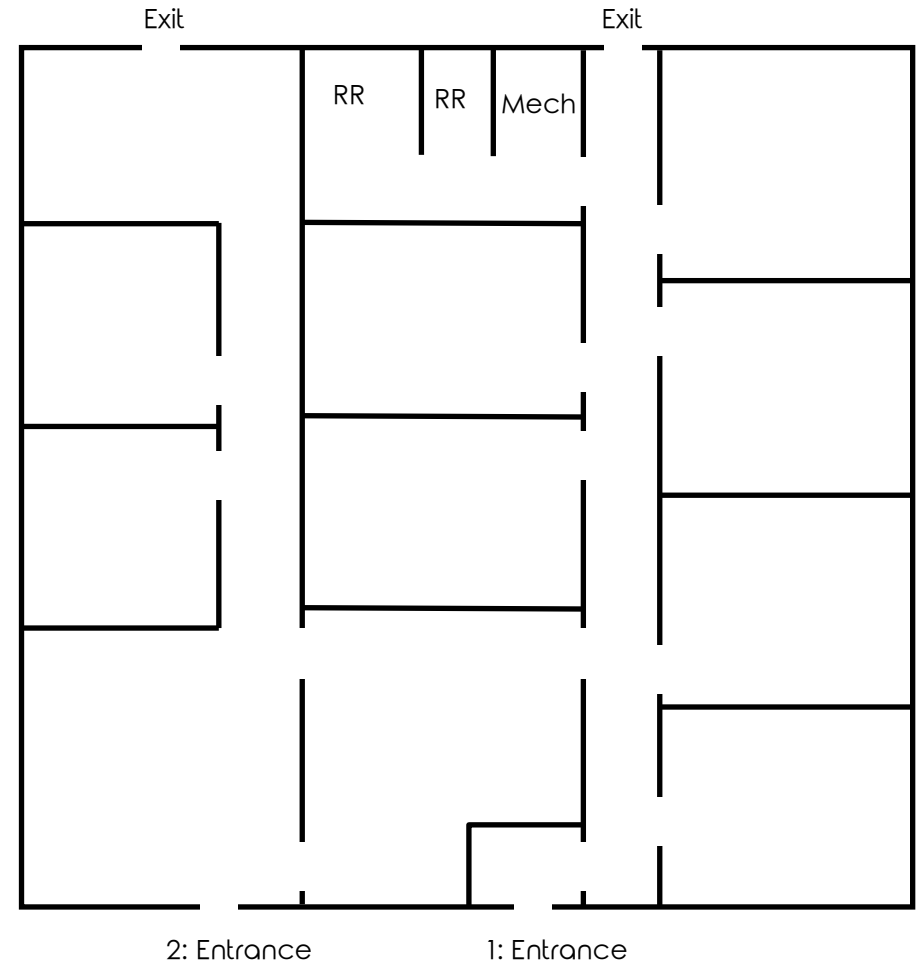
www.PLATZREALTYGROUP.com

Unit 3-5: 784 SF

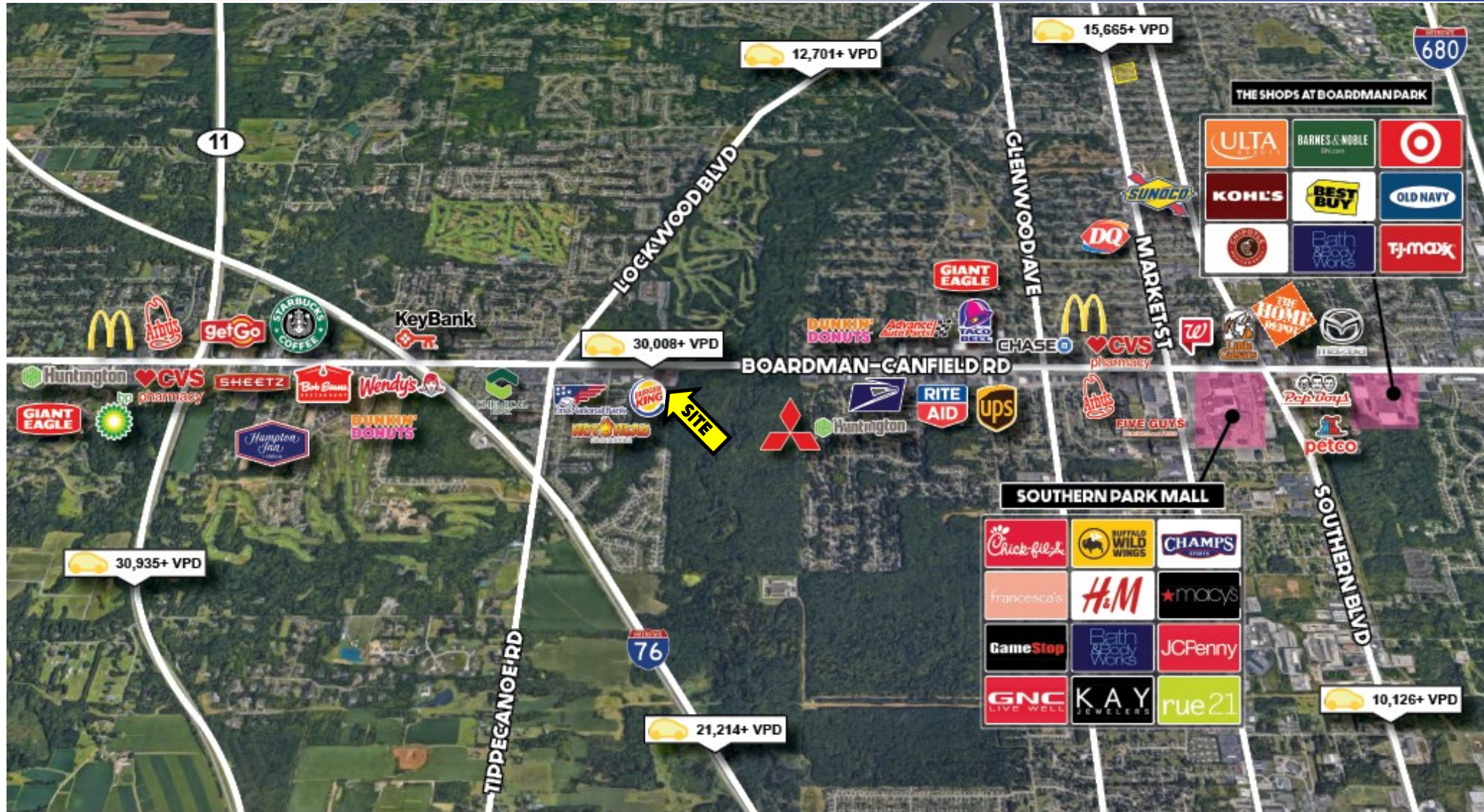


Not to scale

Unit 1-2: 2,500 SF

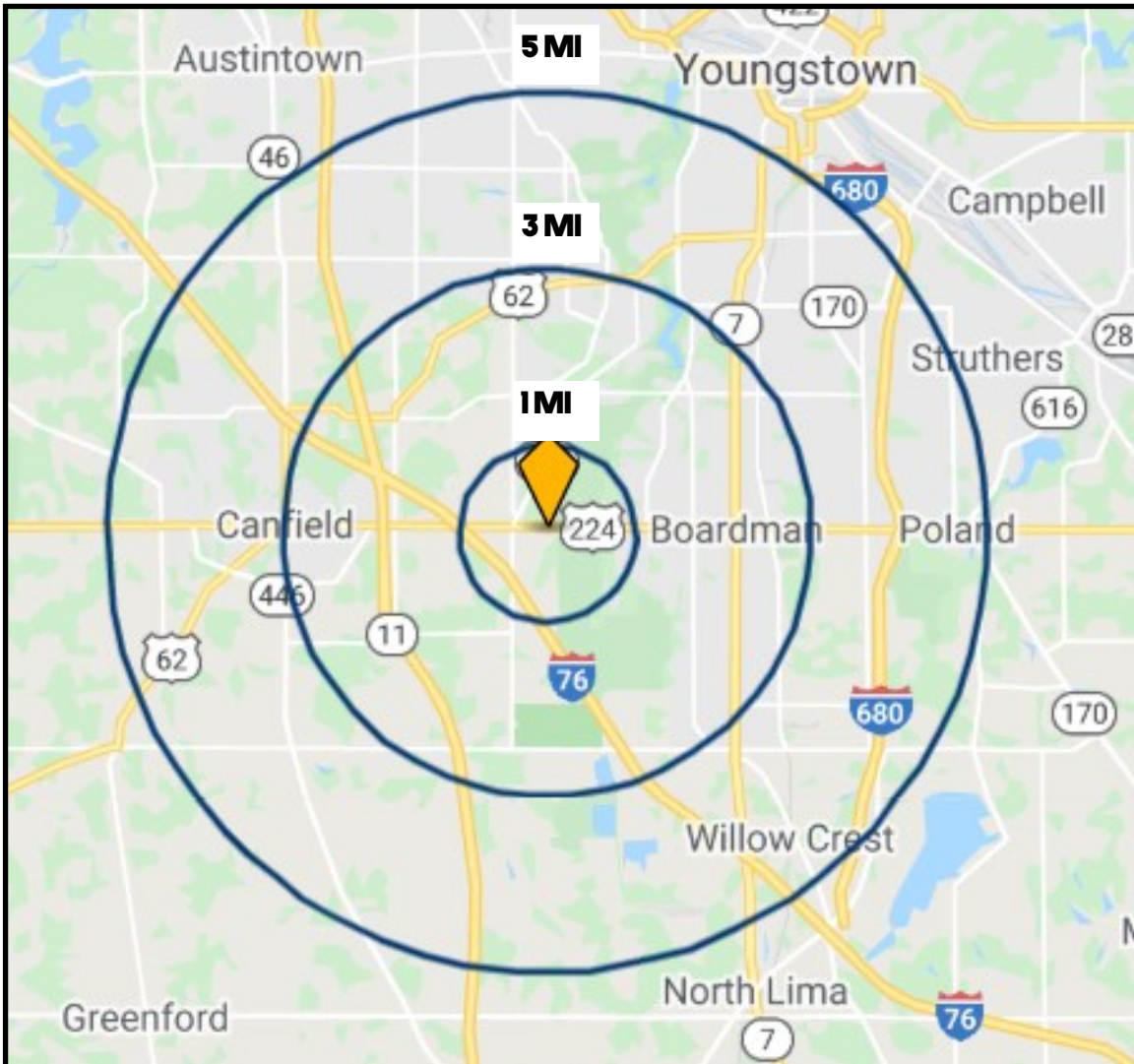


Office: 330.757.4889 | Fax: 330.294.5622 | 3830 Starr Centre Dr, Suite 2, Canfield, OH 44406



Office: 330.757.4889 | Fax: 330.294.5622 | 3830 Starr Centre Dr, Suite 2, Canfield, OH 44406

www.PLATZREALTYGROUP.com



DEMOGRAPHICS	1 MI	3 MI	5 MI
POPULATION	5,681	38,405	103,751
HOUSEHOLDS	2,497	16,794	44,393
AVERAGE AGE	43	43	43
MEDIAN HH INCOME	\$75,574	\$64,828	\$53,673

SITE INFORMATION

LOCATION	Boardman Township; Mahoning County
PROPERTY TYPE	Multi-tenant Retail /office
AVAILABLE	1-2: 2,500 SF 3-5: 784 SF
YEAR BUILT	1992
ZONING	Commercial
RENT	\$10.00/SF Gross
UTILITIES	Separately metered

Office: 330.757.4889 | Fax: 330.294.5622 | 3830 Starr Centre Dr, Suite 2, Canfield, OH 44406

www.PLATZREALTYGROUP.com