

Lordstown Village; Trumbull County
Northeast corner of Ellsworth Bailey Rd & Industrial Trace

4.45 acres - Approximately 506' x 383'
Zoning: Industrial I-1
Just north of I-80 on/off ramp
Parcel: 45-903687

Real Estate Taxes: \$1,793.26/year
Price: \$155,750

CONTACT

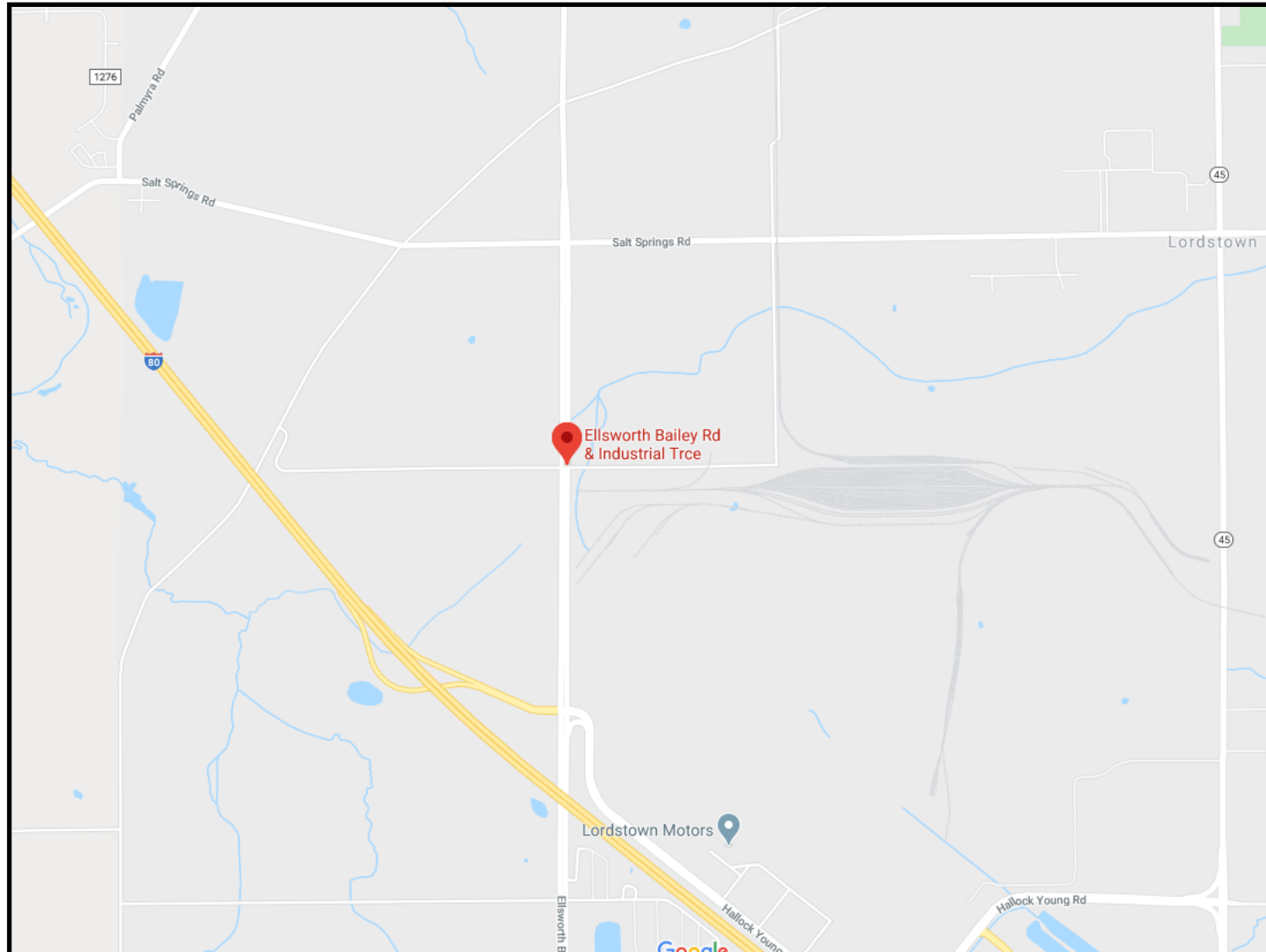
BILL KUTLICK

330.565.5701

bkutlick@platzrealtygroup.com

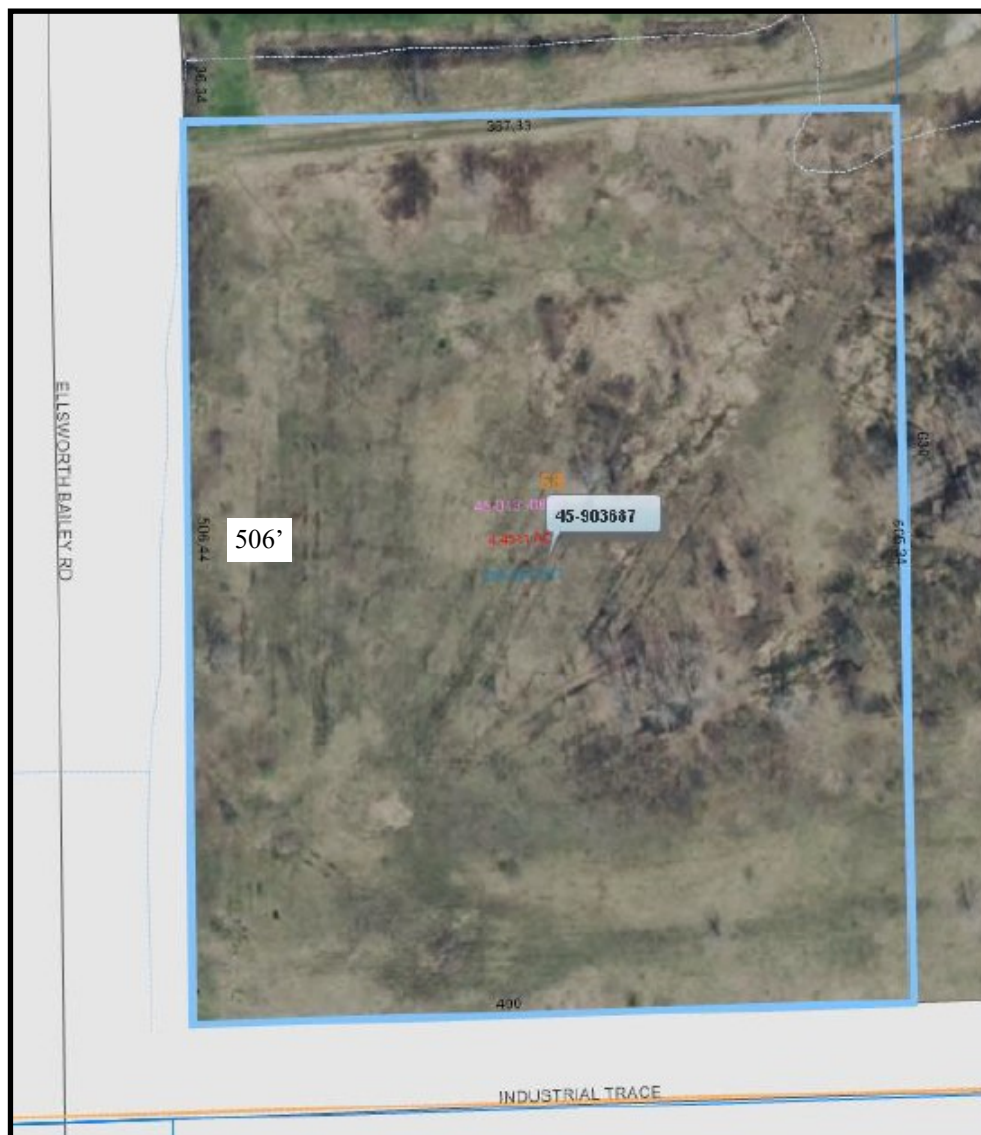
Office: 330.757.4889 | Fax: 330.294.5622 | 3768 Boardman-Canfield Rd, Canfield, OH 44406

WWW.PLATZREALTYGROUP.COM



Office: 330.757.4889 | Fax: 330.294.5622 | 3768 Boardman-Canfield Rd, Canfield, OH 44406

www.PLATZREALTYGROUP.com



Office: 330.757.4889 | Fax: 330.294.5622 | 3768 Boardman-Canfield Rd, Canfield, OH 44406

www.PLATZREALTYGROUP.com