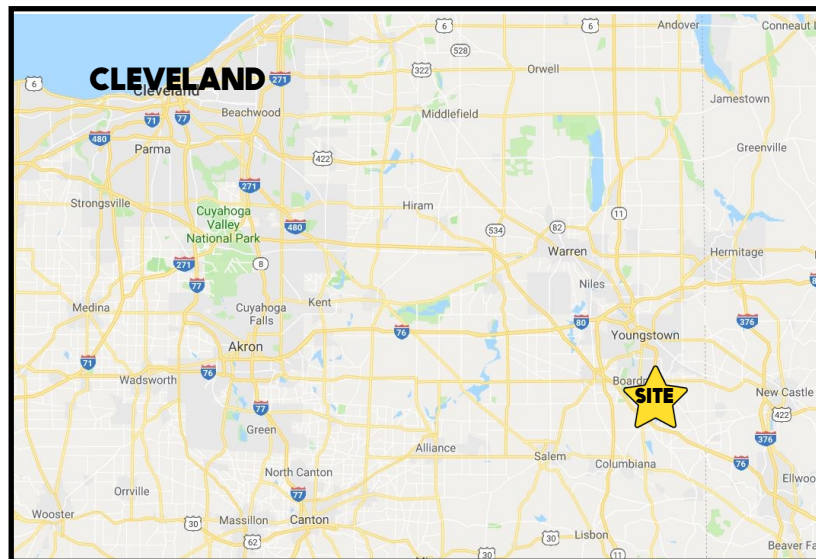


LOCATION

South Ave, Poland, OH 44514



TRAFFIC

South Ave = 9,396 VPD
Western Reserve Rd = 10,470 VPD

HIGHLIGHTS

- 9.9 acres of land
- Springfield Township; Mahoning County
- Approx. 800' from I-680 ramp at Western Reserve Rd
- Close to McDonald's, Dunkin', Wendy's, Taco Bell, etc.
- Heavy daytime traffic

CONTACT

DON THOMAS

501.269.3827

dthomas@platzrealtygroup.com

Office: 330.757.4889 | Fax: 330.294.5622 | 3768 Boardman Canfield Rd, Canfield, OH 44406

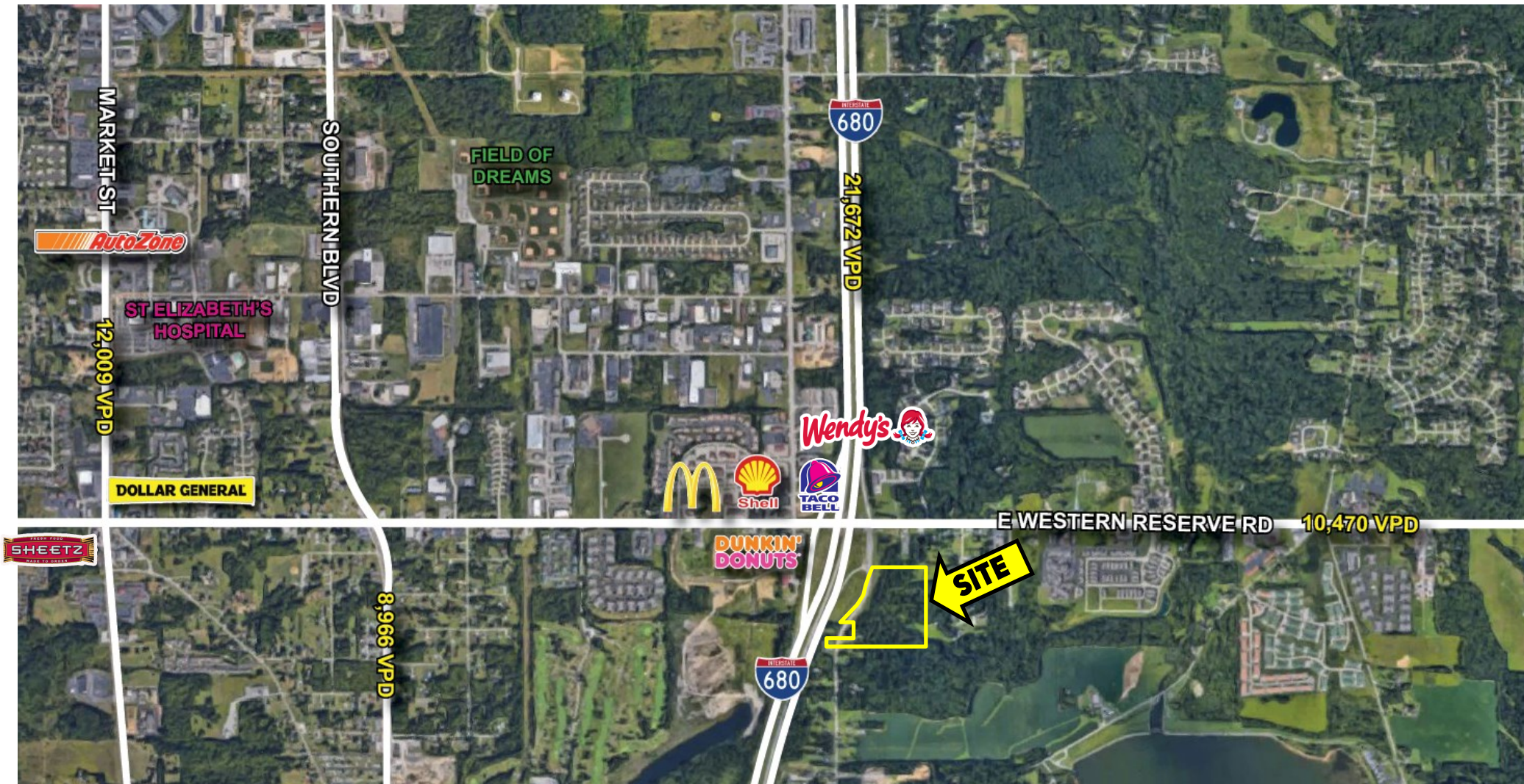
www.PLATZREALTYGROUP.com



Office: 330.757.4889 | Fax: 330.294.5622 | 3768 Boardman Canfield Rd, Canfield, OH 44406

www.PLATZREALTYGROUP.com

The information presented was obtained from sources believed to be true and reliable. The Platz Realty Group makes no warranties or guarantees to the accuracy of the information.

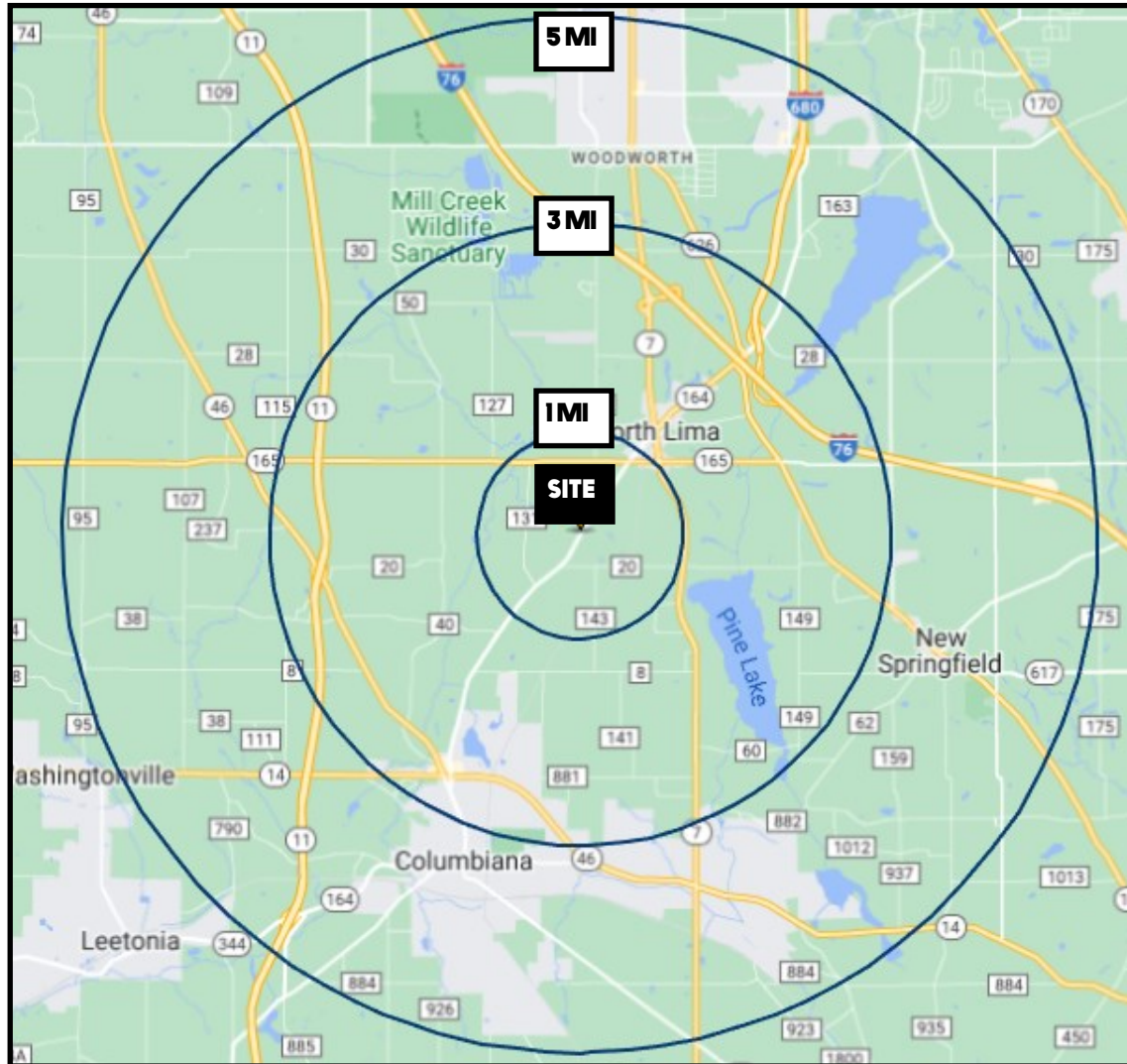


Office: 330.757.4889 | Fax: 330.294.5622 | 3768 Boardman Canfield Rd, Canfield, OH 44406

www.PLATZREALTYGROUP.com

The information presented was obtained from sources believed to be true and reliable. The Platz Realty Group makes no warranties or guarantees to the accuracy of the information.

SITE INFORMATION



DEMOGRAPHICS	1 MI	3 MI	5 MI
POPULATION	2,272	21,055	66,579
HOUSEHOLDS	980	8,834	28,154
MEDIAN AGE	51	50	46
AVERAGE HH INCOME	\$80,445	\$88,179	\$76,210

SITE INFORMATION	
LOCATION	Springfield Township
	Mahoning County
PARCEL	01-216-0-001
PROPERTY TYPE	Land
SIZE	9.89 acres
REAL ESTATE TAXES	\$963/year
PRICE	\$219,000

Office: 330.757.4889 | Fax: 330.294.5622 | 3768 Boardman Canfield Rd, Canfield, OH 44406

www.PLATZREALTYGROUP.com

The information presented was obtained from sources believed to be true and reliable. The Platz Realty Group makes no warranties or guarantees to the accuracy of the information.