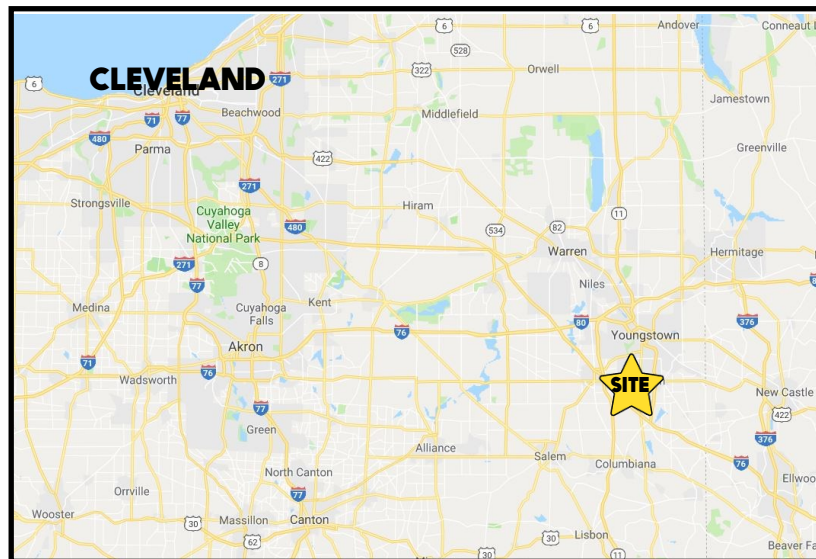


## LOCATION

8464 Market St, Boardman, OH 44512



## HIGHLIGHTS

- .4 acres on Market St (SR 7) by Marwood Circle
- Zoned General Business
- Approximately 70' x 290'
- Located between Western Reserve Rd and McClurg Rd by Mercy Health, Davis YMCA, and Prima Healthcare

## TRAFFIC

Market St = 12,085 VPD

## CONTACT

**BILL KUTLICK**

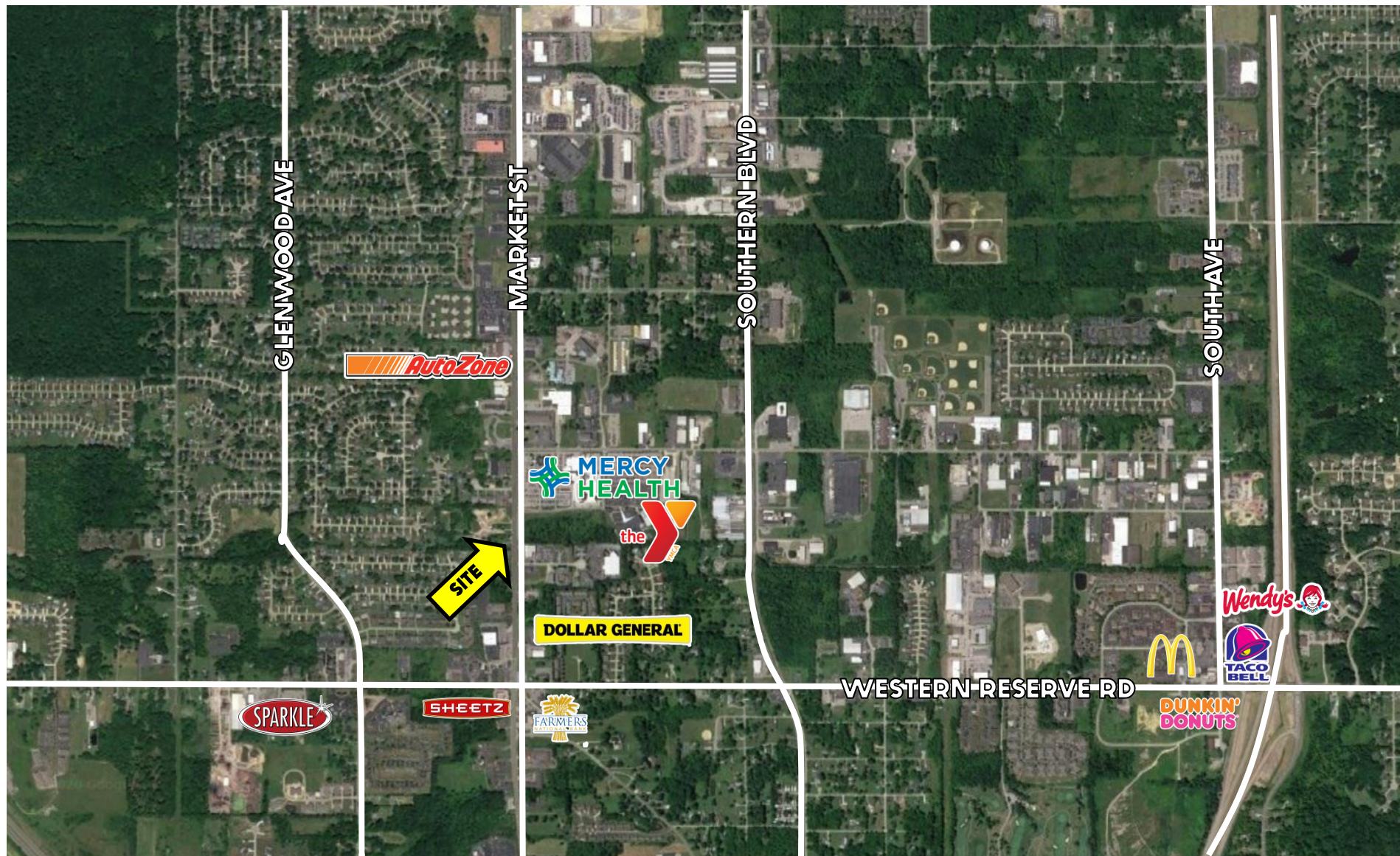
330.565.5701

[bkutlick@platzrealtygroup.com](mailto:bkutlick@platzrealtygroup.com)

Office: 330.757.4889 | Fax: 330.294.5622 | 3768 Boardman Canfield Rd, Canfield, OH 44406

**[www.PLATZREALTYGROUP.com](http://www.PLATZREALTYGROUP.com)**



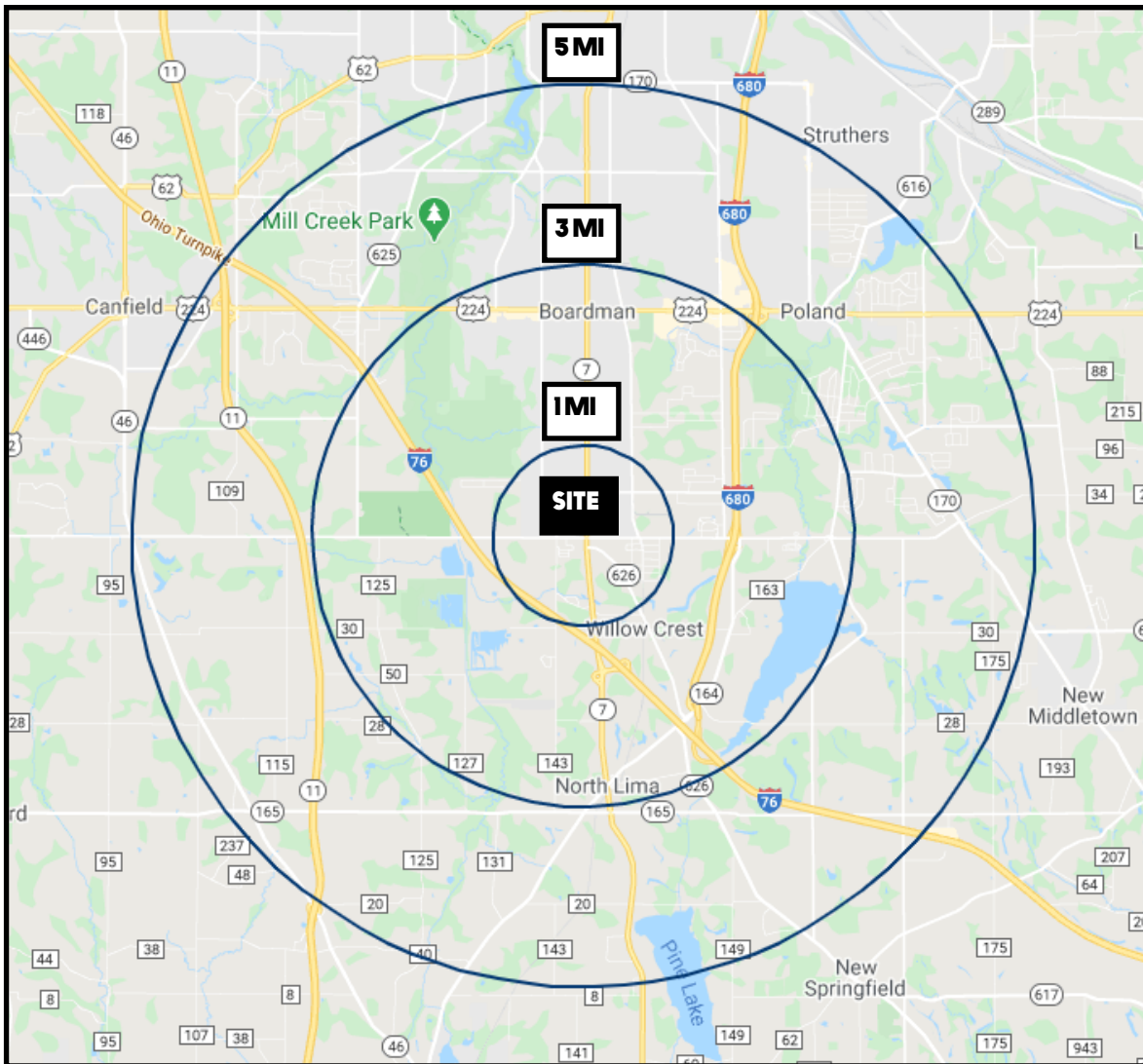


Office: 330.757.4889 | Fax: 330.294.5622 | 3768 Boardman Canfield Rd, Canfield, OH 44406

**[www.PLATZREALTYGROUP.com](http://www.PLATZREALTYGROUP.com)**



# SITE INFORMATION



DEMOGRAPHICS	1 MI	3 MI	5 MI
POPULATION	4,134	21,641	70,691
HOUSEHOLDS	1,885	9,533	30,040
MEDIAN AGE	49	48	46
AVERAGE HH INCOME	\$70,293	\$77,017	\$79,114

SITE INFORMATION	
LOCATION	Boardman Township Mahoning County
PROPERTY TYPE	Commercial Land
ZONING	GB - General Business
PARCEL	29-096-0-010
SIZE	.46 acres Approximately 70' x 290'
REAL ESTATE TAXES	\$1,536 / year
PRICE	<del>\$79,900</del> <b>REDUCED!</b> <del>\$69,900</del> \$50,000

Office: 330.757.4889 | Fax: 330.294.5622 | 3768 Boardman Canfield Rd, Canfield, OH 44406

**www.PLATZREALTYGROUP.com**