



Boardman Township; Mahoning County

Northeast Corner of Western Reserve Rd, South Avenue, and I-680

High traffic location, adjacent to Taco Bell

Total of 1.57 acres
Parcels: 29-049-0-002.06 / 29-049-0-002.07

Zoned: Industrial

GROUND LEASE: \$60,000/acre/year

CONTACT

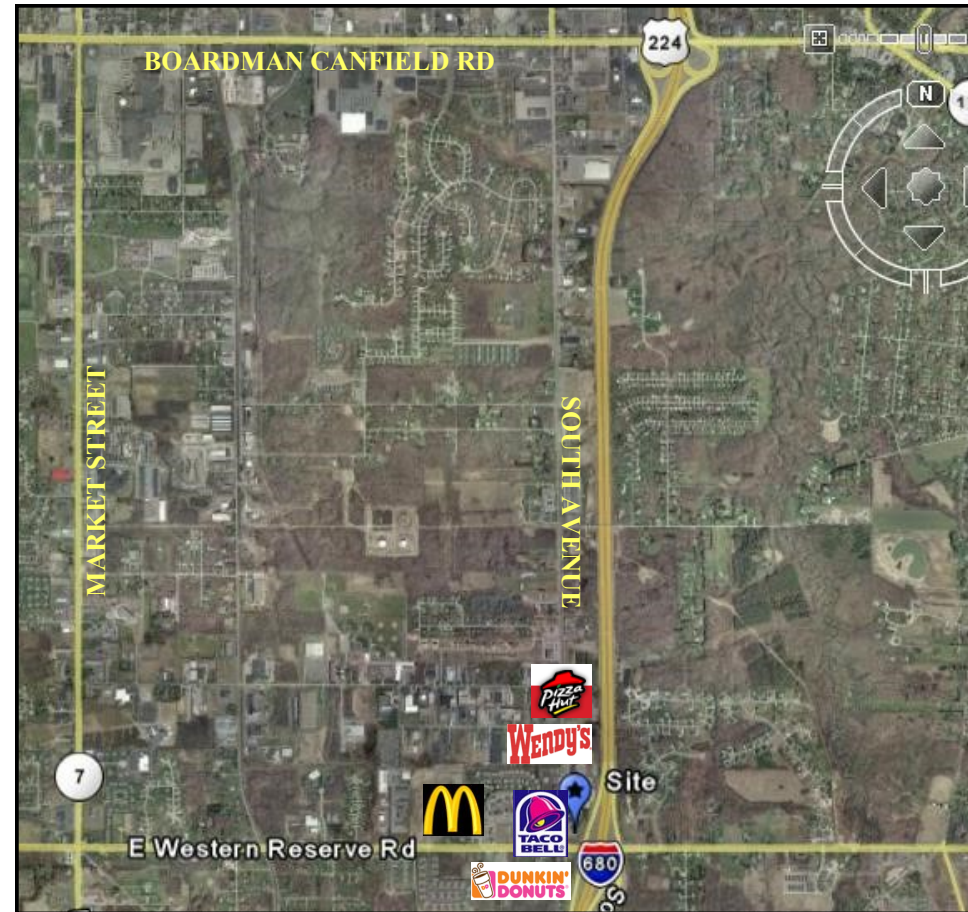
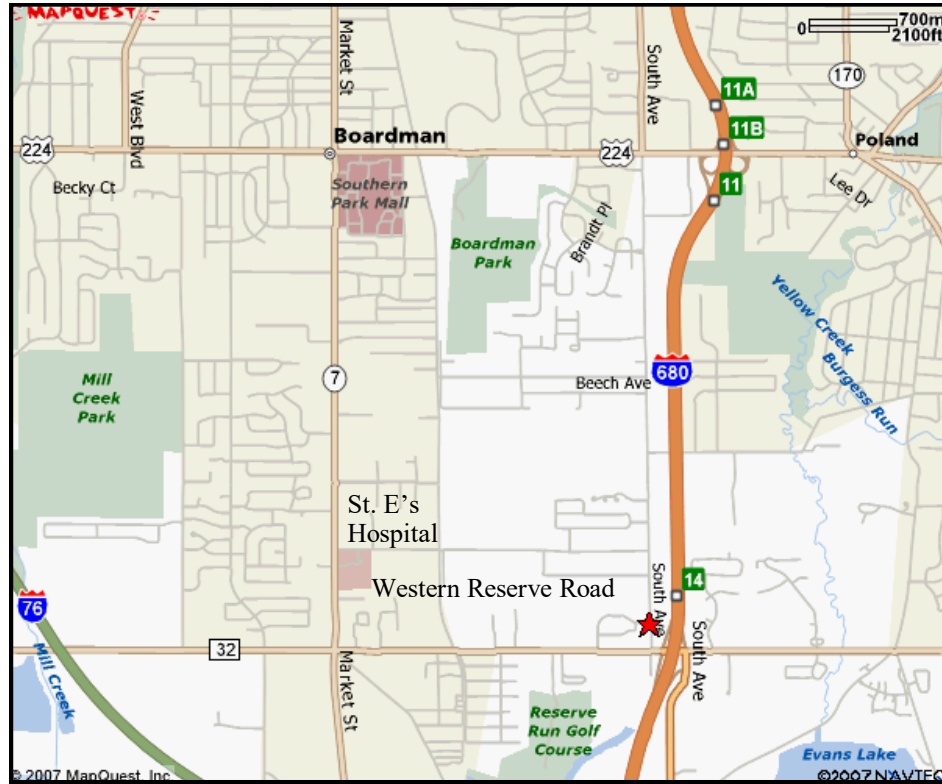
BILL KUTLICK

330.565.5701

bkutlick@platzrealtygroup.com

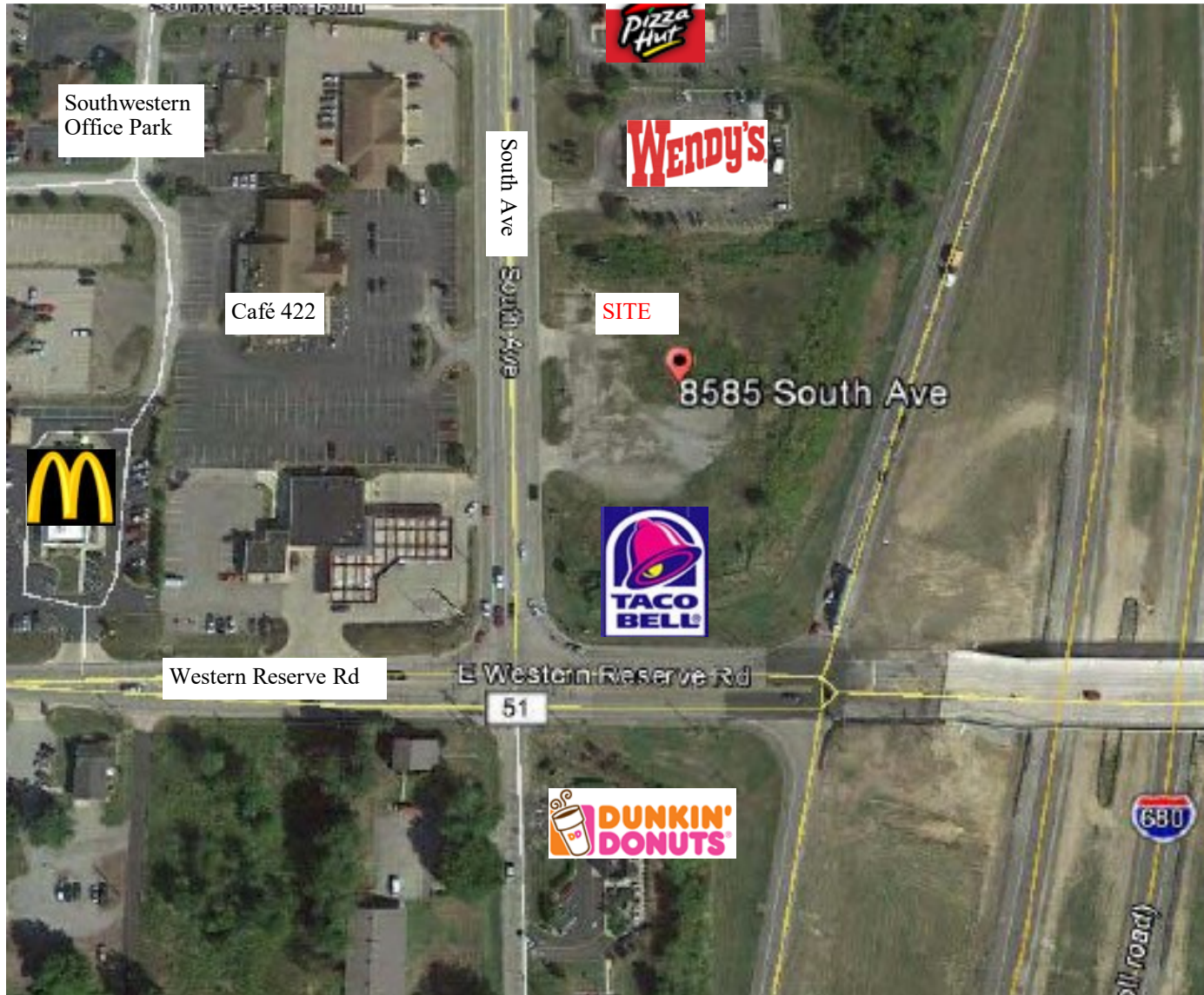
Office: 330.757.4889 | Fax: 330.294.5622 | 3768 Boardman-Canfield Rd, Canfield, OH 44406

www.PLATZREALTYGROUP.com



Office: 330.757.4889 | Fax: 330.294.5622 | 3768 Boardman-Canfield Rd, Canfield, OH 44406

www.PLATZREALTYGROUP.com



Office: 330.757.4889 | Fax: 330.294.5622 | 3768 Boardman-Canfield Rd, Canfield, OH 44406

www.PLATZREALTYGROUP.com