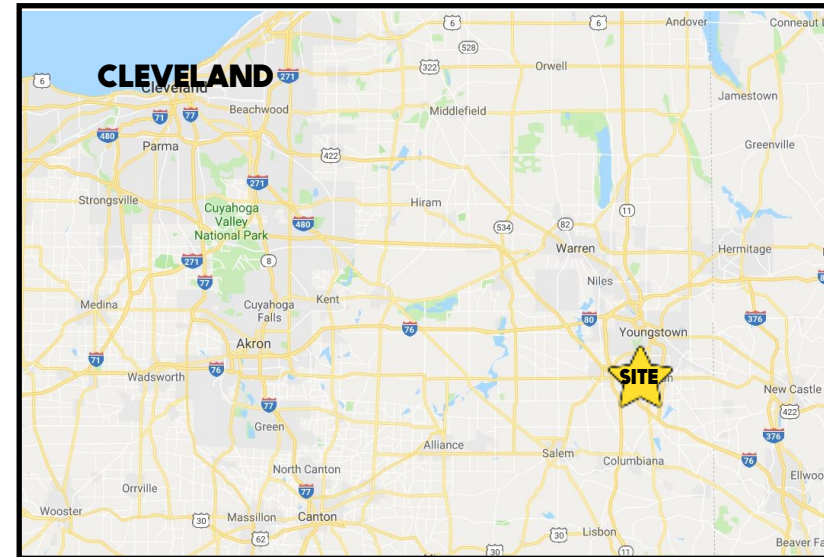


## LOCATION

320 Boardman Poland Rd, Boardman, OH 44512



## HIGHLIGHTS

- Former Golden Corral Restaurant
- 2.73 acres with 227' frontage on US 224, 500' deep
- 12,456 SF building with 380 seats
- Great Boardman location by Target, Kohls, Dick's, Bed Bath Beyond Near Southern Park Mall, Hobby Lobby, Marshalls, & Walmart

Office: 330.757.4889 | Fax: 330.294.5622 | 3768 Boardman Canfield Rd, Canfield, OH 44406

## TRAFFIC

Boardman Poland Rd = 29,795 VPD

## CONTACT

**BILL KUTLICK**

330.565.5701

[bkutlick@platzrealtgroup.com](mailto:bkutlick@platzrealtgroup.com)



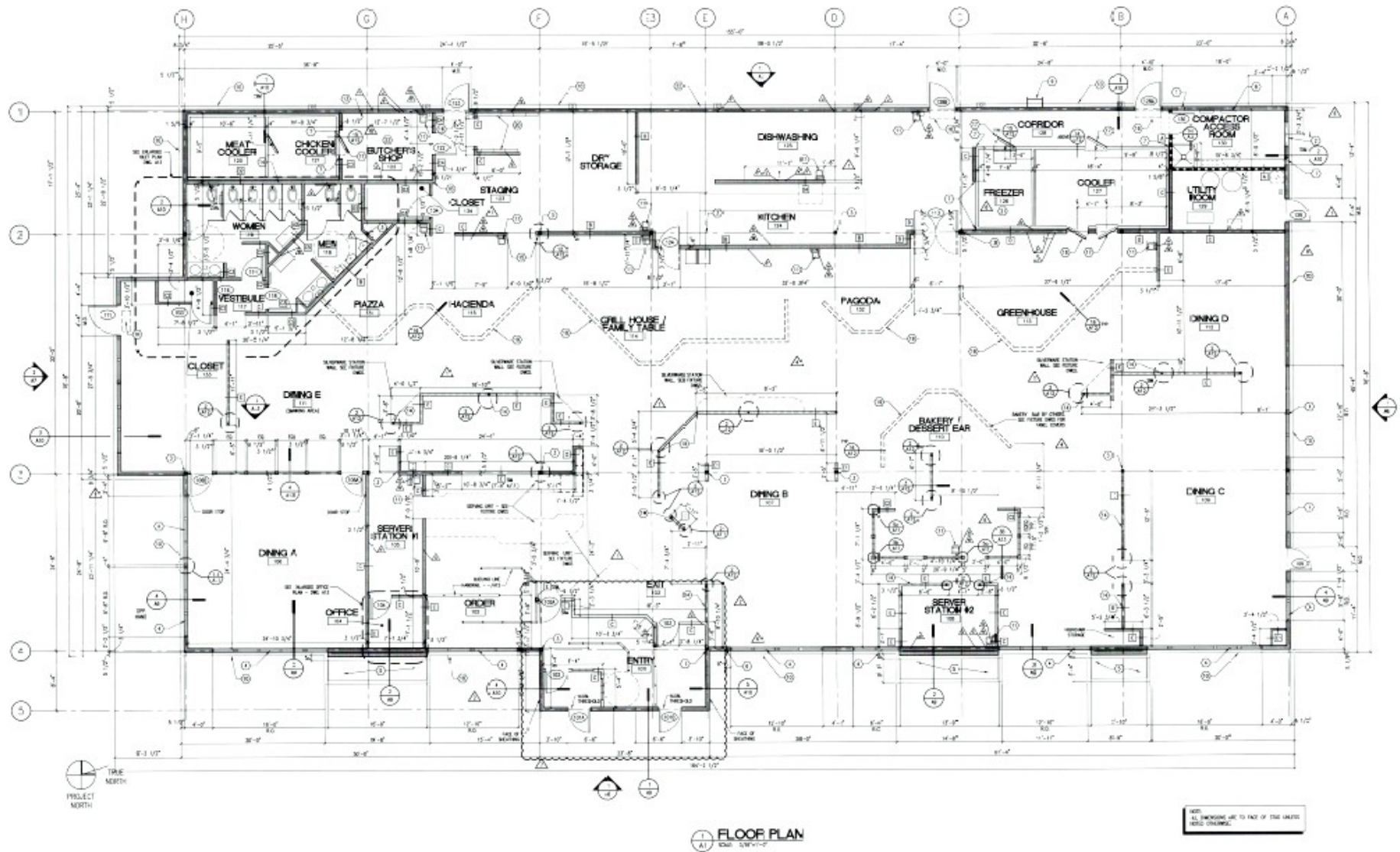
Office: 330.757.4889 | Fax: 330.294.5622 | 3768 Boardman Canfield Rd, Canfield, OH 44406

**[www.PLATZREALTYGROUP.com](http://www.PLATZREALTYGROUP.com)**



Office: 330.757.4889 | Fax: 330.294.5622 | 3768 Boardman Canfield Rd, Canfield, OH 44406

**[www.PLATZREALTYGROUP.com](http://www.PLATZREALTYGROUP.com)**

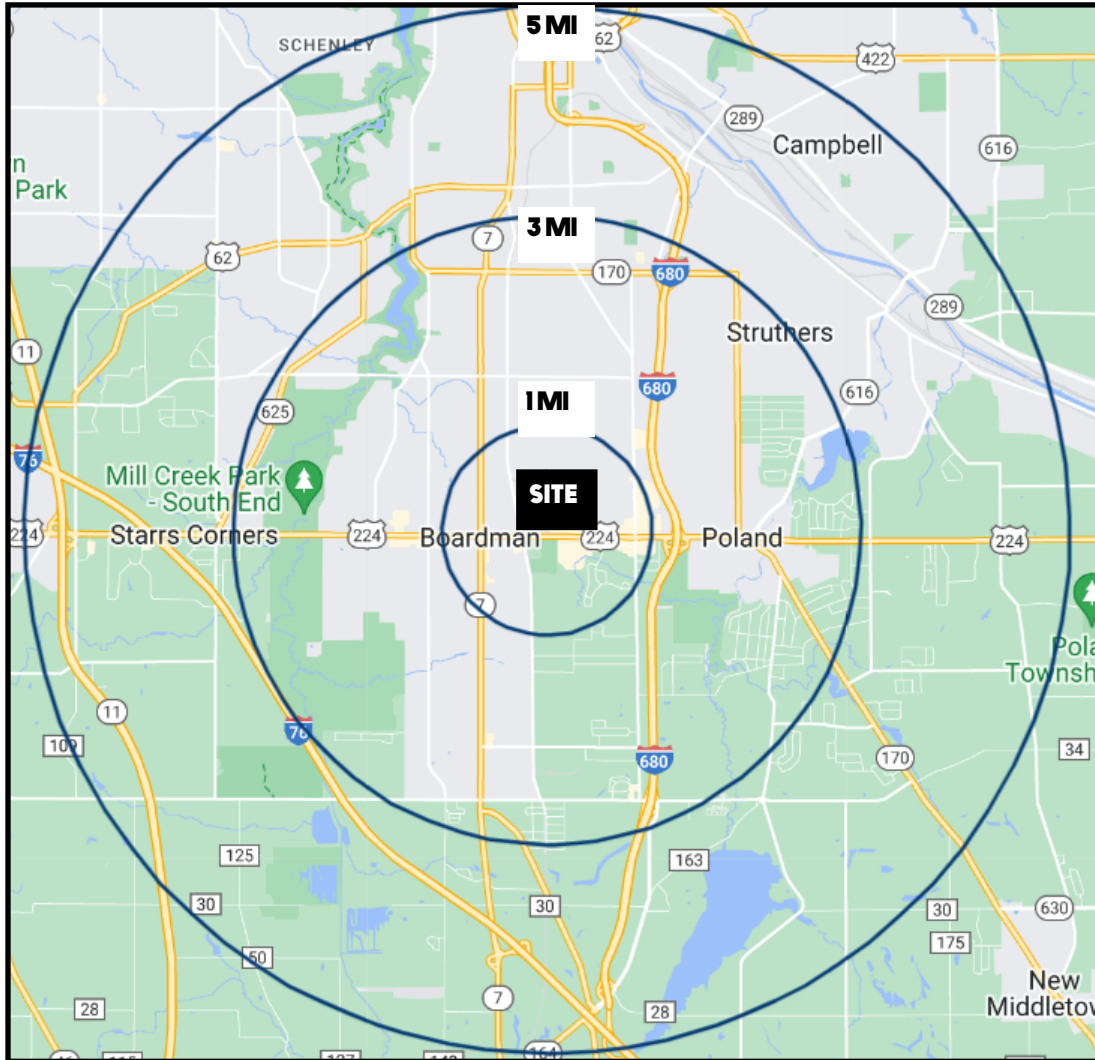


Office: 330.757.4889 | Fax: 330.294.5622 | 3768 Boardman Canfield Rd, Canfield, OH 44406

[www.PLATZREALTYGROUP.com](http://www.PLATZREALTYGROUP.com)

The information presented was obtained from sources believed to be true and reliable. The Platz Realty Group makes no warranties or guarantees to the accuracy of the information.





DEMOGRAPHICS	1 MI	3 MI	5 MI
<b>POPULATION</b>	5,881	55,374	110,806
<b>HOUSEHOLDS</b>	2,560	23,902	46,603
<b>MEDIAN AGE</b>	45	45	44
<b>AVERAGE HH INCOME</b>	\$70,159	\$69,530	\$66,620

SITE INFORMATION	
<b>LOCATION</b>	Boardman Township Mahoning County
<b>PROPERTY TYPE</b>	Restaurant
<b>ZONING</b>	RB - Regional Business
<b>PARCEL</b>	29-006-0-042.05
<b>SIZE</b>	5,000 - 12,456 SF
<b>ACREAGE</b>	2.7 acres
<b>REAL ESTATE TAXES</b>	\$33,968/year
<b>RENT</b>	\$8.00/SF NNN

Office: 330.757.4889 | Fax: 330.294.5622 | 3768 Boardman Canfield Rd, Canfield, OH 44406